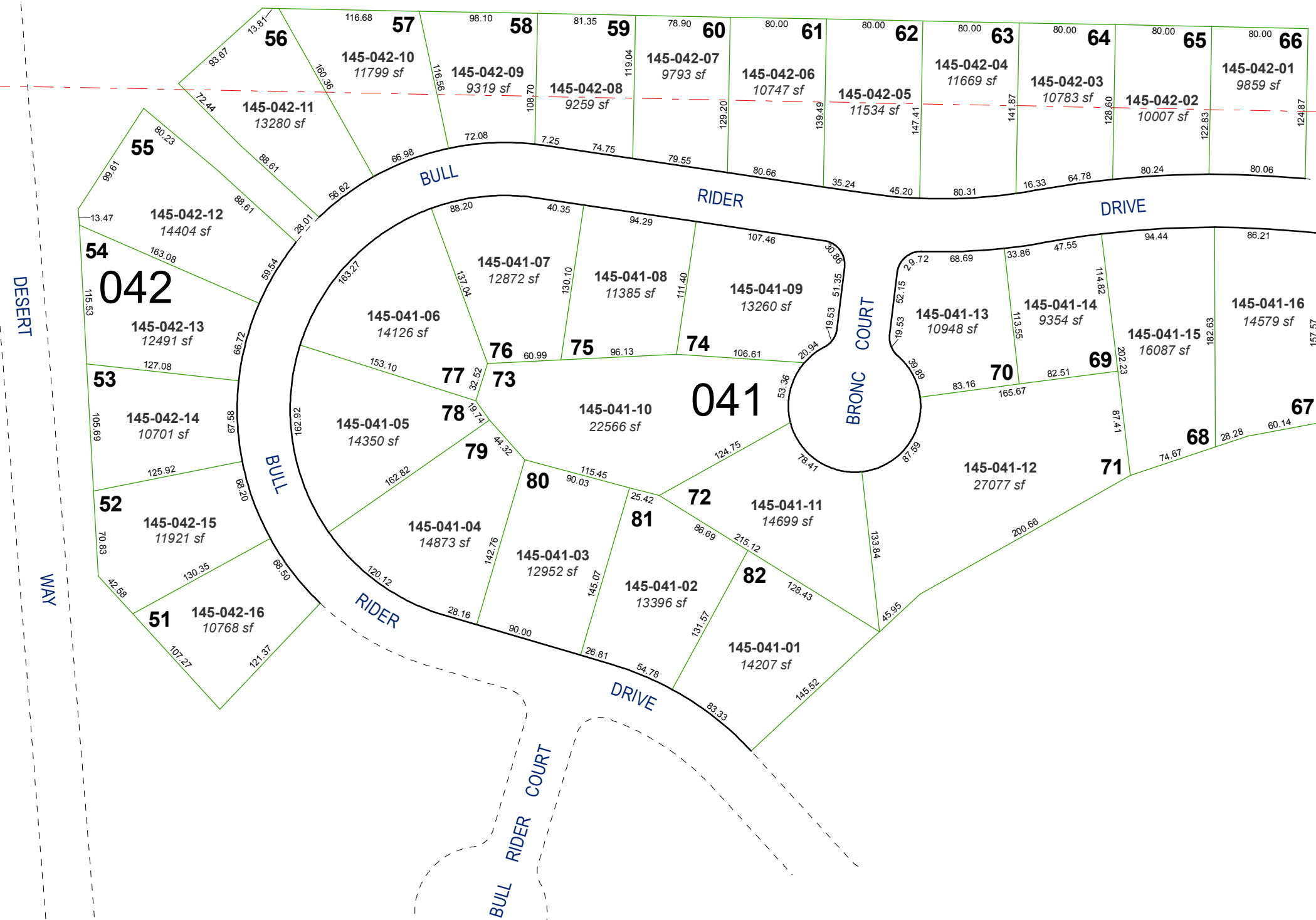


**(#4674)**  
**GOLDEN HILLS PHASE 1**  
 PORTIONS OF THE NW ¼ OF SEC. 14  
 AND THE SW ¼ OF SEC. 11  
 T18N - R20E

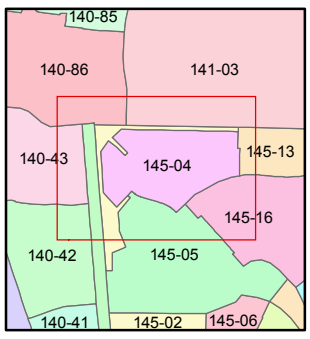
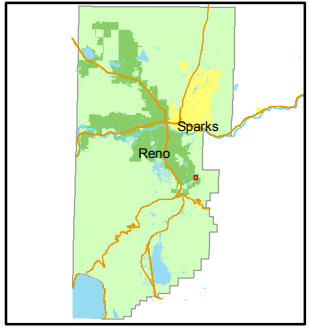
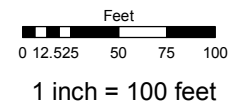
10 11  
 15 14



Assessor's Map Number  
**145-04**

STATE OF NEVADA  
**WASHOE COUNTY**  
**ASSESSOR'S OFFICE**  
 Joshua G. Wilson, Assessor

1001 East Ninth Street  
 Building D  
 Reno, Nevada 89512  
 (775) 328-2231



created by: NLH 3/16/2011  
 last updated: \_\_\_\_\_  
 area previously shown on map(s)  
145-02

NOTE: This map was prepared for the use of the Washoe County Assessor for assessment and illustrative purposes only. It does not represent a survey of the premises. No liability is assumed as to the sufficiency or accuracy of the data delineated herein.