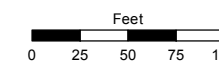
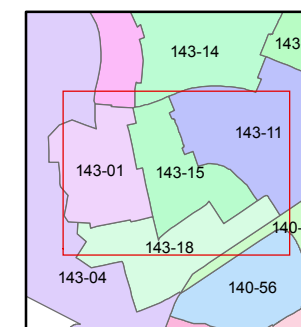
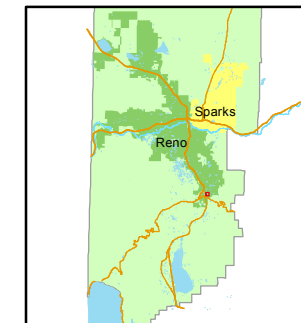


STATE OF NEVADA  
**WASHOE COUNTY**  
ASSESSOR'S OFFICE  
Joshua G. Wilson, Assessor

1001 East Ninth Street  
Building D  
Reno, Nevada 89512  
(775) 328-2231



1 inch = 100 feet



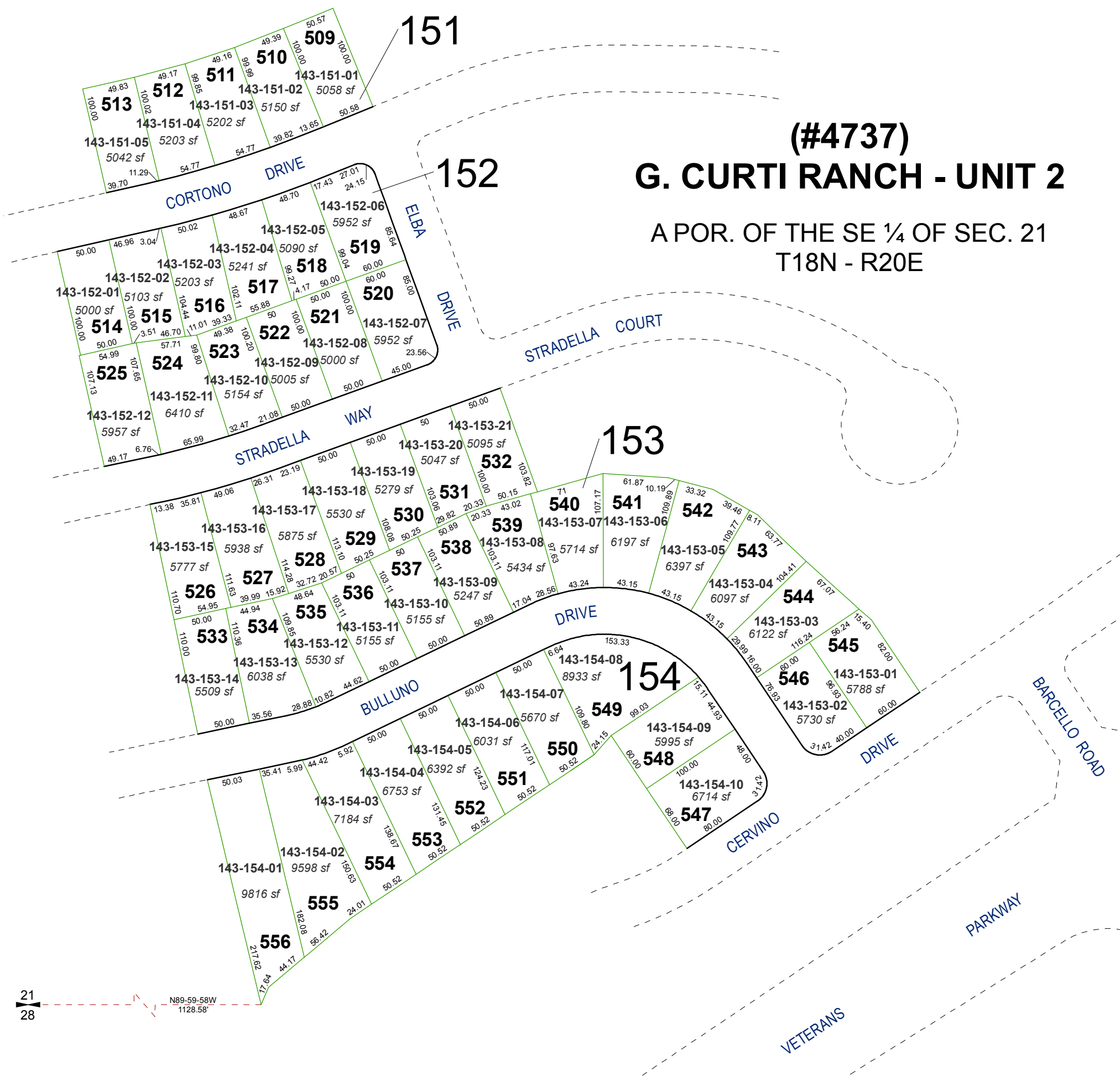
created by: NLH 10/11/2010

last updated: NLH 6/29/11 NLH 3/6/12

area previously shown on map(s)

143-04

NOTE: This map was prepared for the use of the Washoe County Assessor for assessment and illustrative purposes only. It does not represent a survey of the premises. No liability is assumed as to the sufficiency or accuracy of the data delineated herein.



**(#4737)**  
**G. CURTI RANCH - UNIT 2**

A POR. OF THE SE ¼ OF SEC. 21  
T18N - R20E

21  
28  
N89-59-58W  
1128.58'