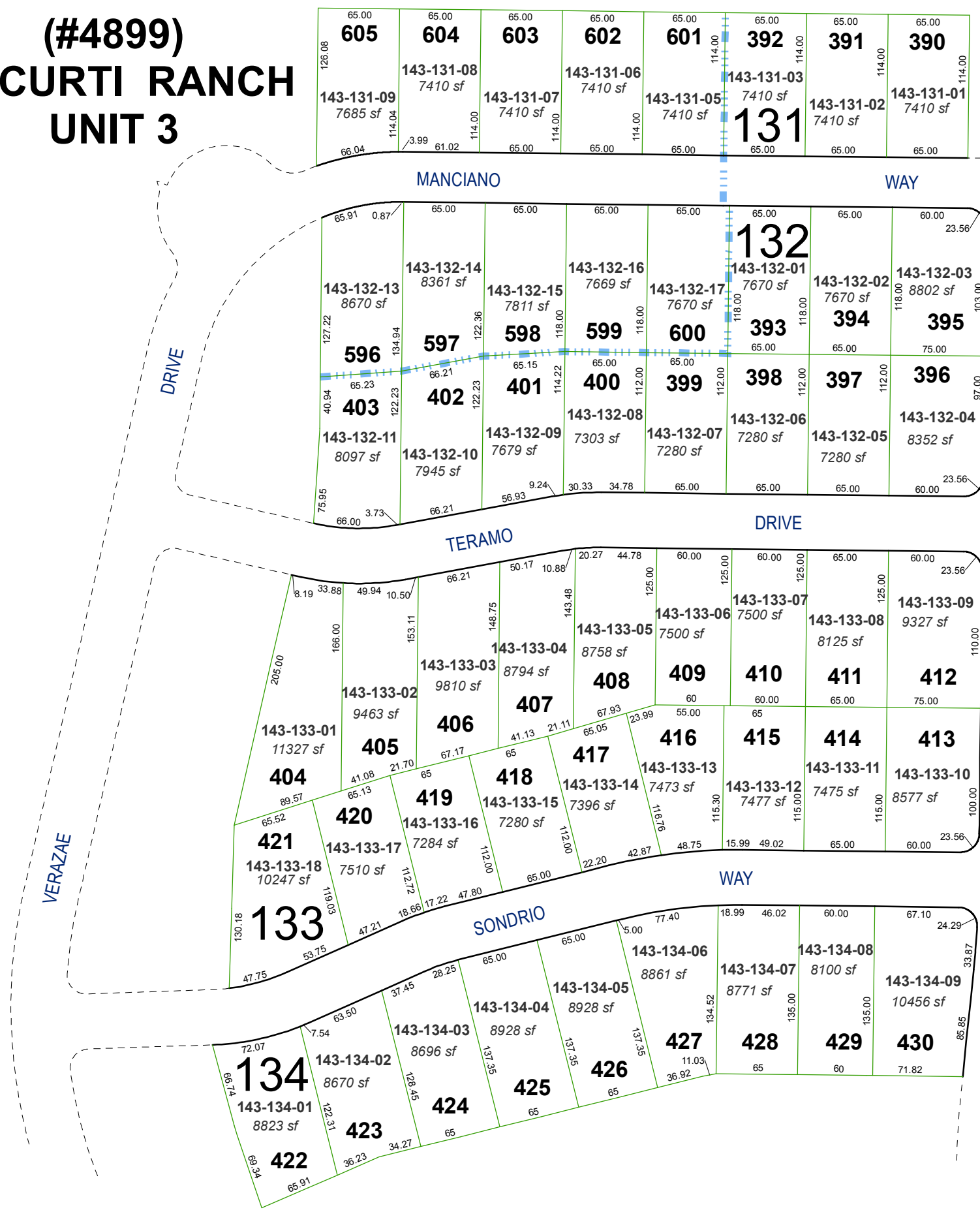


**(#4899)  
G. CURTI RANCH  
UNIT 3**

**(#4737)  
G. CURTI RANCH  
UNIT 2**

PORTION OF THE SE 1/4 OF SEC. 21  
T18N - R20E

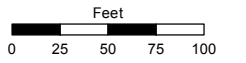


Assessor's Map Number

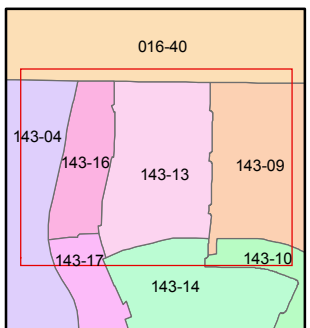
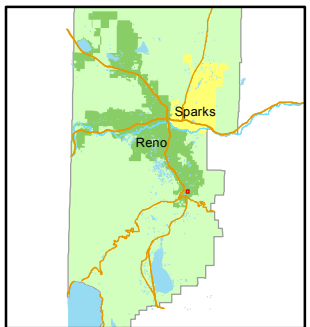
**143-13**

STATE OF NEVADA  
**WASHOE COUNTY**  
ASSESSOR'S OFFICE  
Joshua G. Wilson, Assessor

1001 East Ninth Street  
Building D  
Reno, Nevada 89512  
(775) 328-2231



1 inch = 100 feet



created by: NLH 4/06/2009

last updated: NLH 2/18/10 NLH 3/6/12

area previously shown on map(s)

143-04

NOTE: This map was prepared for the use of the Washoe County Assessor for assessment and illustrative purposes only. It does not represent a survey of the premises. No liability is assumed as to the sufficiency or accuracy of the data delineated herein.