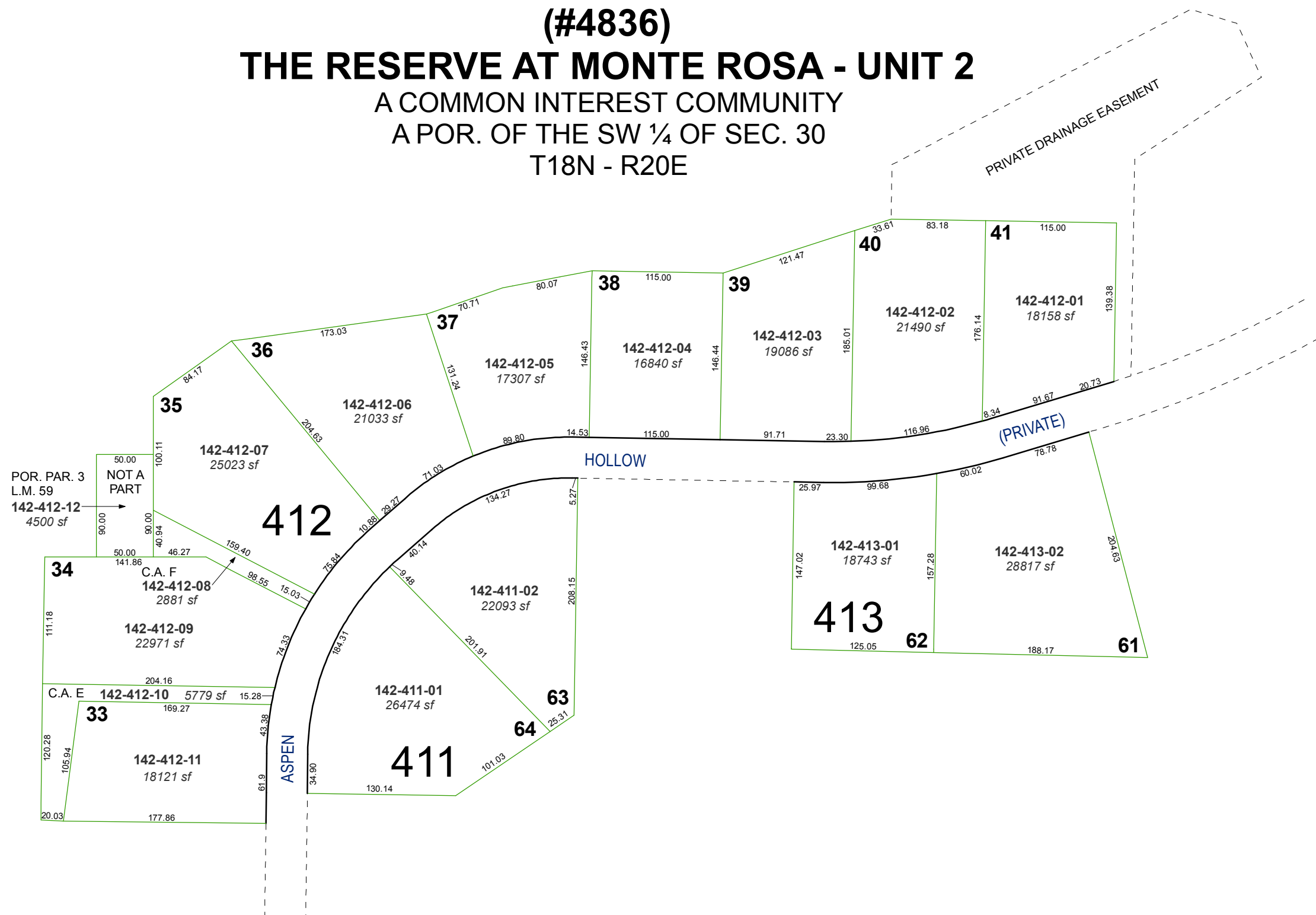
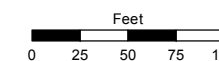


**(#4836)**  
**THE RESERVE AT MONTE ROSA - UNIT 2**  
A COMMON INTEREST COMMUNITY  
A POR. OF THE SW ¼ OF SEC. 30  
T18N - R20E

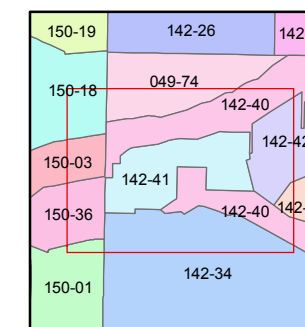
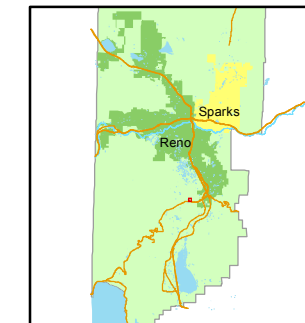


STATE OF NEVADA  
**WASHOE COUNTY**  
ASSESSOR'S OFFICE  
Joshua G. Wilson, Assessor

1001 East Ninth Street  
Building D  
Reno, Nevada 89512  
(775) 328-2231



1 inch = 100 feet



created by: NLH 09/19/2012

last updated: \_\_\_\_\_

area previously shown on map(s)

049-40

C.A. = COMMON AREA

NOTE: This map was prepared for the use of the Washoe County Assessor for assessment and illustrative purposes only. It does not represent a survey of the premises. No liability is assumed as to the sufficiency or accuracy of the data delineated herein.