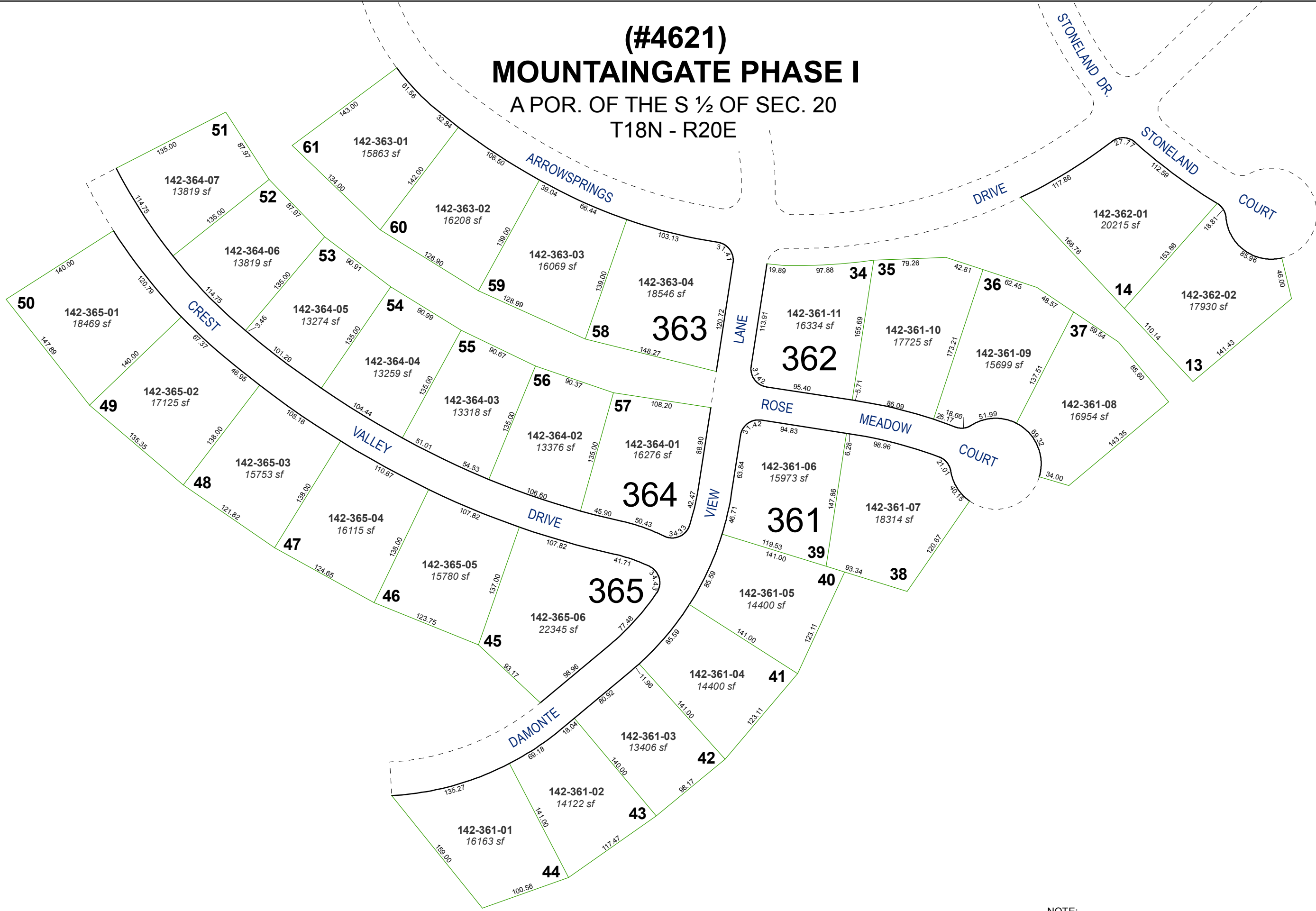


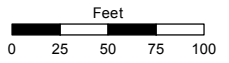
**(#4621)**  
**MOUNTAINGATE PHASE I**  
 A POR. OF THE S ½ OF SEC. 20  
 T18N - R20E



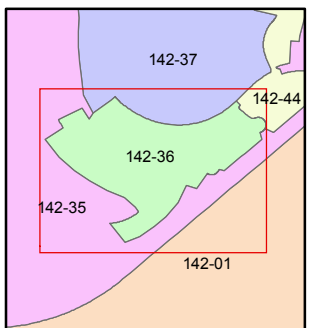
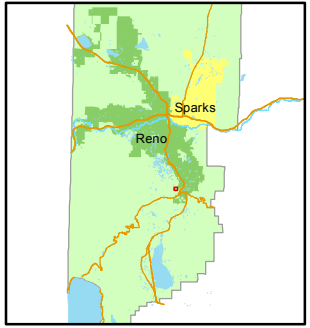
Assessor's Map Number  
**142-36**

STATE OF NEVADA  
**WASHOE COUNTY**  
 ASSESSOR'S OFFICE  
 Joshua G. Wilson, Assessor

1001 East Ninth Street  
 Building D  
 Reno, Nevada 89512  
 (775) 328-2231



1 inch = 100 feet



created by: NLH 08/23/2012  
 last updated: \_\_\_\_\_  
 area previously shown on map(s)  
142-01

NOTE:  
 STREETS FOR TRACT MAP 4621 ARE PRIVATE

NOTE: This map was prepared for the use of the Washoe County Assessor for assessment and illustrative purposes only. It does not represent a survey of the premises. No liability is assumed as to the sufficiency or accuracy of the data delineated herein.