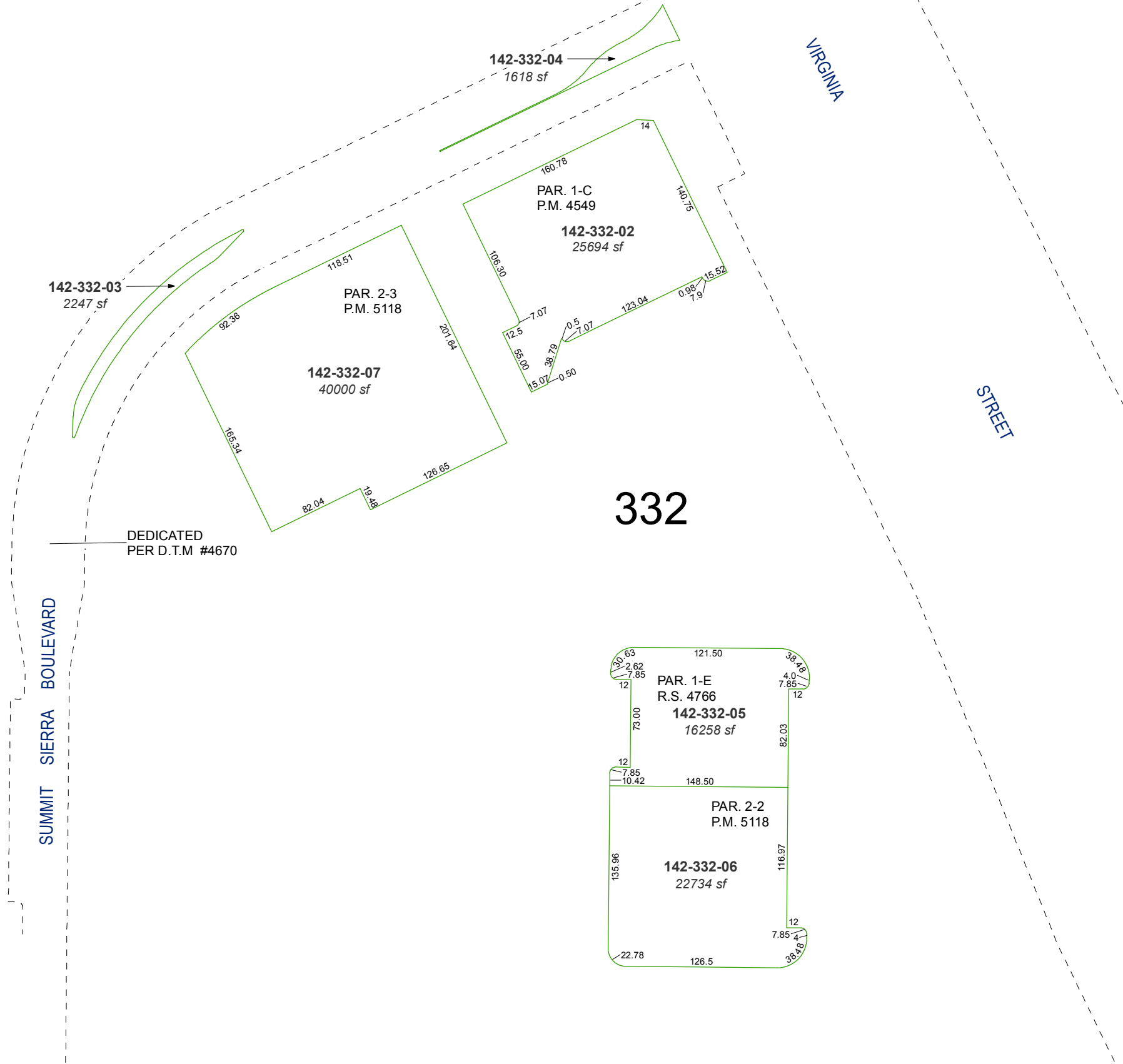


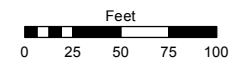
A POR. OF THE SW ¼ OF SEC. 21
T18N - R20E



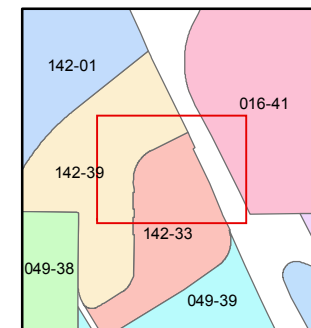
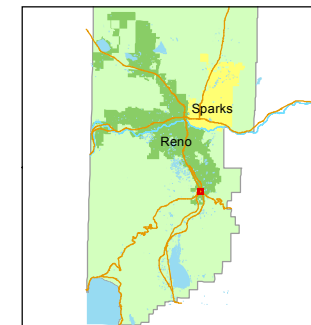
Assessor's Map Number
142-33-S2

STATE OF NEVADA
WASHOE COUNTY
ASSESSOR'S OFFICE
Joshua G. Wilson, Assessor

1001 East Ninth Street
Building D
Reno, Nevada 89512
(775) 328-2231



1 inch = 100 feet



created by: NLH 09/19/2012

last updated: EMG 4/10/2014

area previously shown on map(s)
049-23

NOTE: This map was prepared for the use of the Washoe County Assessor for assessment and illustrative purposes only. It does not represent a survey of the premises. No liability is assumed as to the sufficiency or accuracy of the data delineated hereon.