

GOVERNMENT HOMESITES

A POR. OF THE NORTH 1/2 OF SEC. 30

T18N - R20E

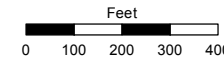
STATE OF NEVADA

WASHOE COUNTY

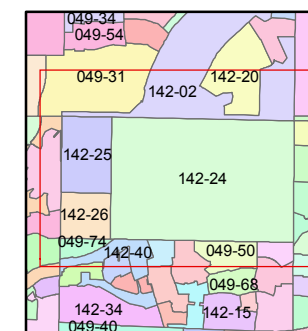
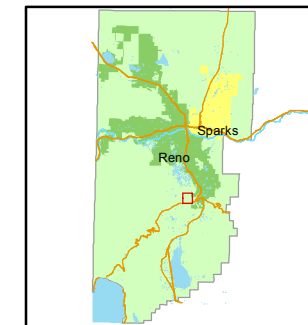
ASSESSOR'S OFFICE

Joshua G. Wilson, Assessor

1001 East Ninth Street
Building D
Reno, Nevada 89512
(775) 328-2231



1 inch = 400 feet



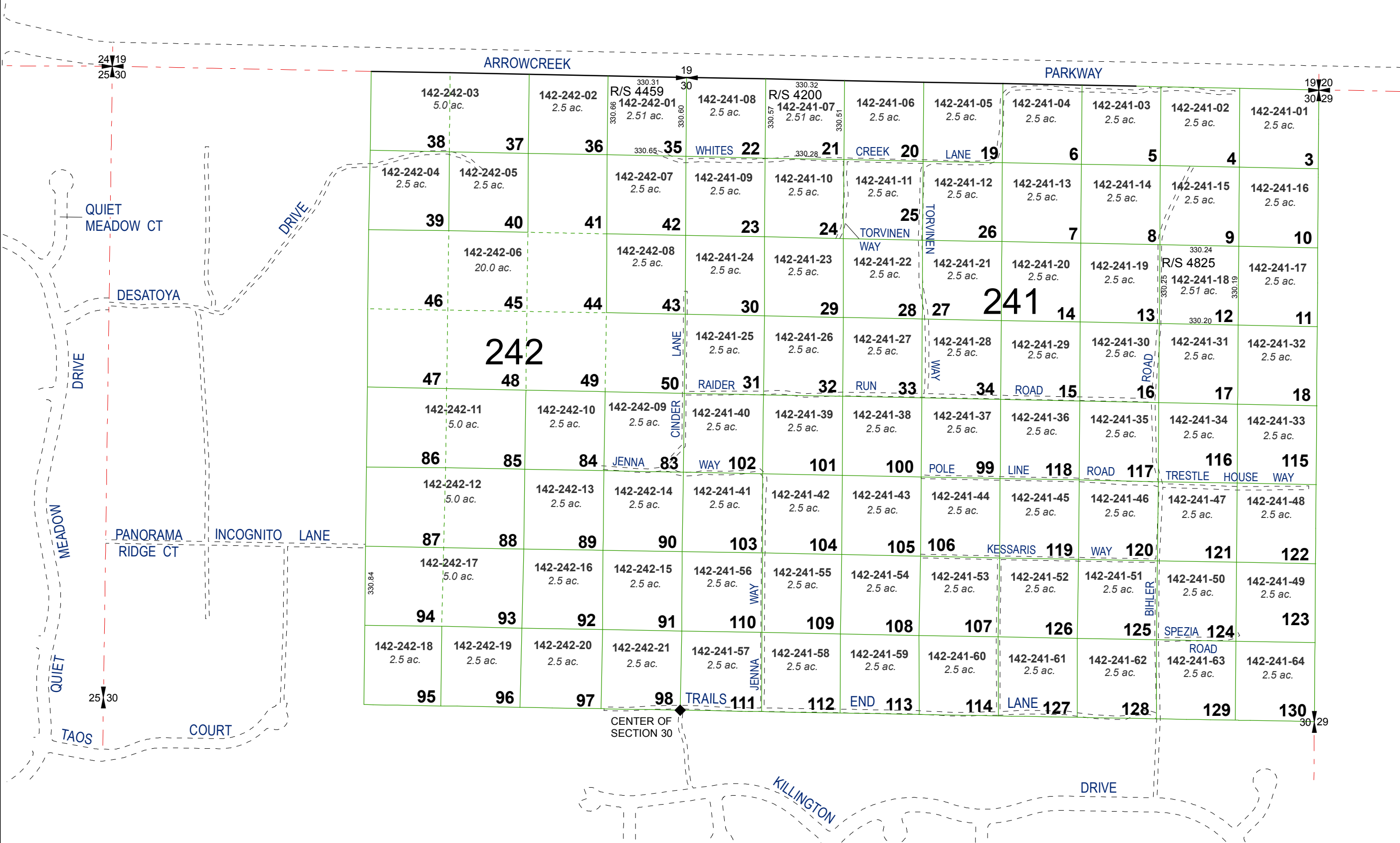
created by: NLH 8/05/2009

last updated: NLH 11/3/11

area previously shown on map(s)

049-37

NOTE: This map was prepared for the use of the Washoe County Assessor for assessment and illustrative purposes only. It does not represent a survey of the premises. No liability is assumed as to the sufficiency or accuracy of the data delineated herein.



CENTER OF SECTION 30