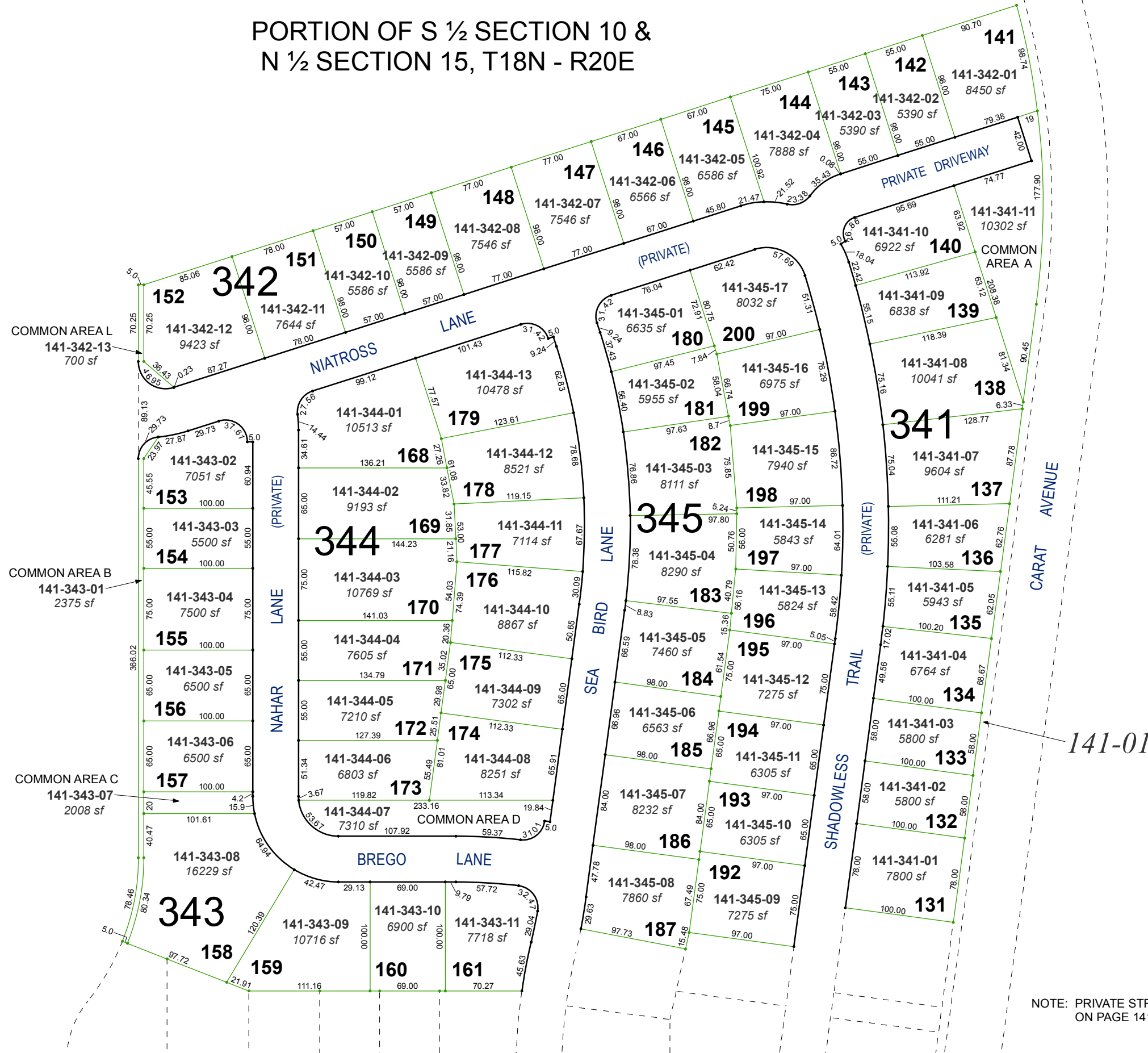


# (#5112) DAMONTE RANCH VILLAGE 5-3

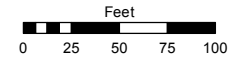
PORTION OF S ½ SECTION 10 &  
N ½ SECTION 15, T18N - R20E



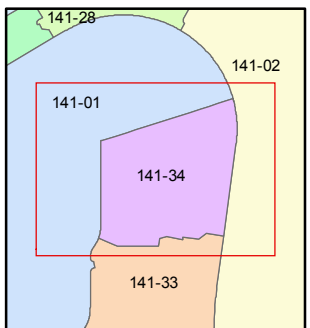
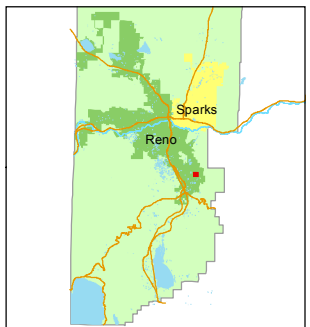
Assessor's Map Number  
**141-34**

STATE OF NEVADA  
**WASHOE COUNTY**  
ASSESSOR'S OFFICE  
Michael E. Clark, Assessor

1001 East Ninth Street  
Building D  
Reno, Nevada 89512  
(775) 328-2231



1 inch = 100 feet



created by: KSB 3/09/2015

last updated: \_\_\_\_\_

area previously shown on map(s)

141-01

NOTE: PRIVATE STREETS ARE PARCELED  
ON PAGE 141-31

NOTE: This map was prepared for the use of the Washoe County Assessor for assessment and illustrative purposes only. It does not represent a survey of the premises. No liability is assumed as to the sufficiency or accuracy of the data delineated hereon.