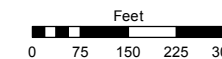


Assessor's Map Number

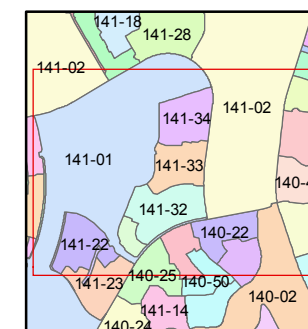
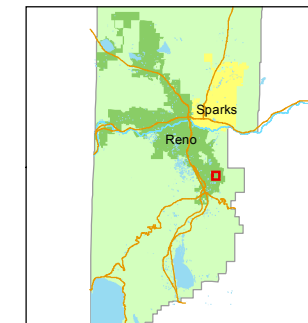
141-31

STATE OF NEVADA
WASHOE COUNTY
ASSESSOR'S OFFICE
Michael E. Clark, Assessor

1001 East Ninth Street
Building D
Reno, Nevada 89512
(775) 328-2231



1 inch = 300 feet



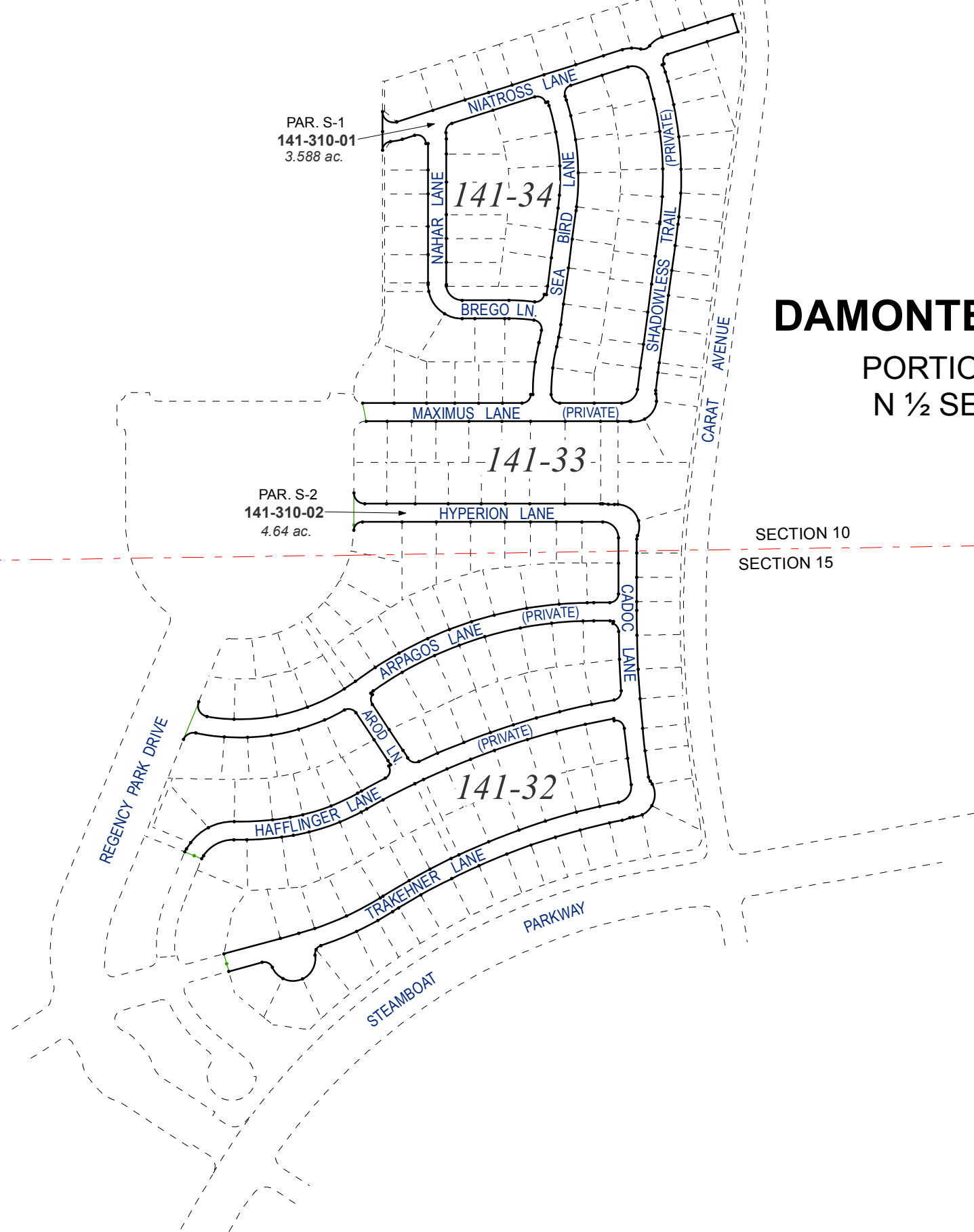
created by: KSB 3/09/2015

last updated: _____

area previously shown on map(s)

141-01

NOTE: This map was prepared for the use of the Washoe County Assessor for assessment and illustrative purposes only. It does not represent a survey of the premises. No liability is assumed as to the sufficiency or accuracy of the data delineated hereon.



(#5112)
DAMONTE RANCH VILLAGE 5-3
PORTION OF S 1/2 SECTION 10 &
N 1/2 SECTION 15, T18N - R20E

PAR. S-1
141-310-01
3.588 ac.

PAR. S-2
141-310-02
4.64 ac.

SECTION 10
SECTION 15