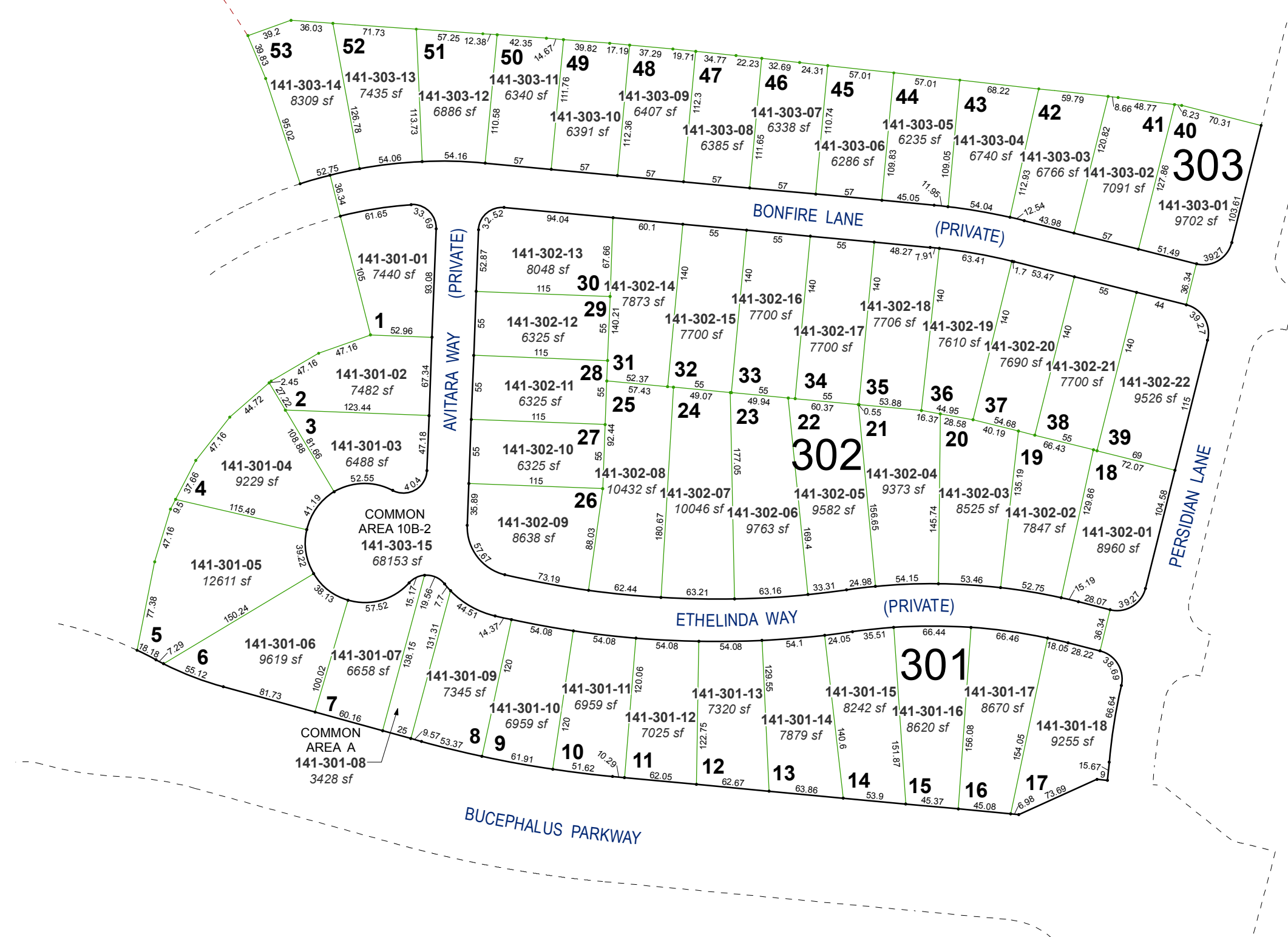


10 11

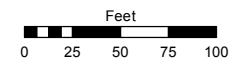
(#5108)
DAMONTE RANCH - VILLAGE 10B-2
 PORTION OF THE SW ¼ SECTION 11
 T18N - R20E



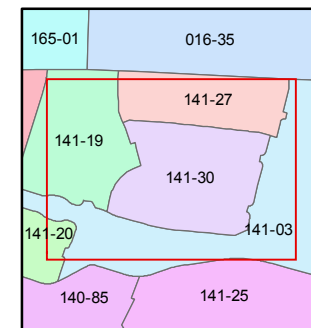
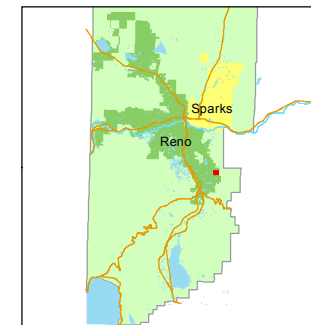
Assessor's Map Number
141-30

STATE OF NEVADA
WASHOE COUNTY
 ASSESSOR'S OFFICE
 Joshua G. Wilson, Assessor

1001 East Ninth Street
 Building D
 Reno, Nevada 89512
 (775) 328-2231



1 inch = 100 feet



created by: EMG 12/8/2014

last updated: _____

area previously shown on map(s)
141-03

NOTE: This map was prepared for the use of the Washoe County Assessor for assessment and illustrative purposes only. It does not represent a survey of the premises. No liability is assumed as to the sufficiency or accuracy of the data delineated hereon.