

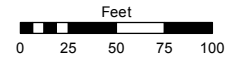
(#5079)
DAMONTE RANCH - VILLAGE 8C
PORTION OF S 1/2 SECTION 10
T18N - R20E

(#5110)
DAMONTE RANCH - VILLAGE 8D

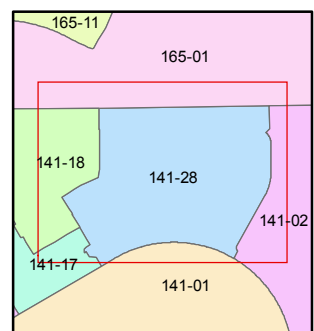
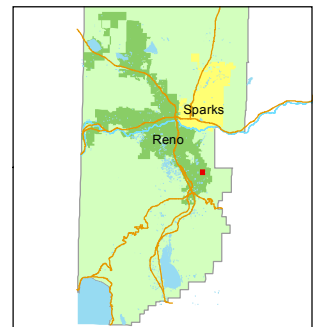
Assessor's Map Number
141-28

STATE OF NEVADA
WASHOE COUNTY
ASSESSOR'S OFFICE
Joshua G. Wilson, Assessor

1001 East Ninth Street
Building D
Reno, Nevada 89512
(775) 328-2231



1 inch = 100 feet



created by: KSB 6/12/2014

last updated: KSB 1/16/15

area previously shown on map(s)

141-16

NOTE: This map was prepared for the use of the Washoe County Assessor for assessment and illustrative purposes only. It does not represent a survey of the premises. No liability is assumed as to the sufficiency or accuracy of the data delineated hereon.

