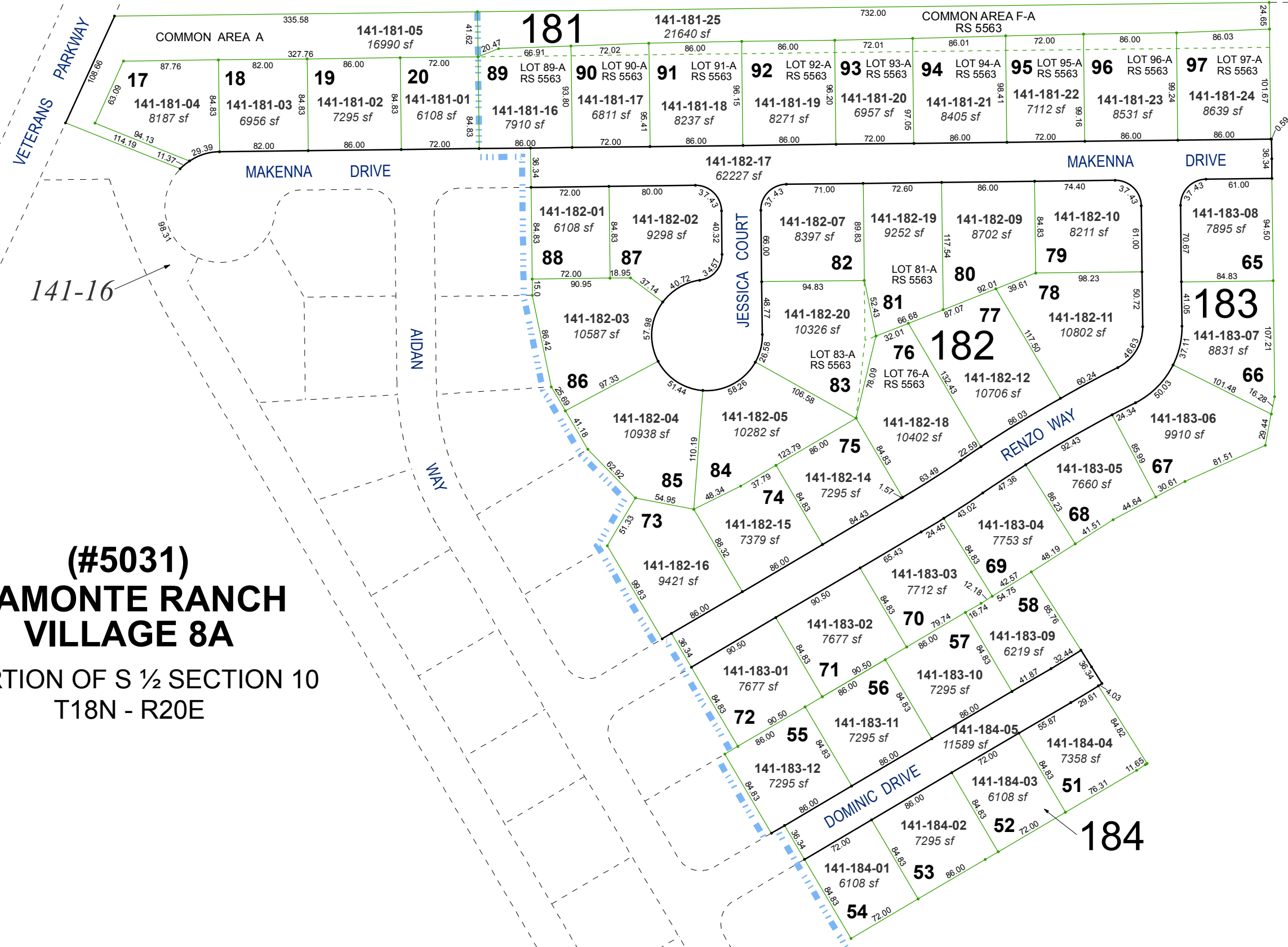


(#5055) DAMONTE RANCH VILLAGE 8B

(#5031) DAMONTE RANCH VILLAGE 8A

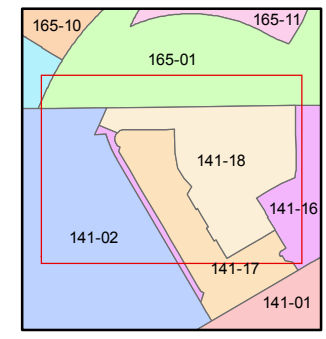
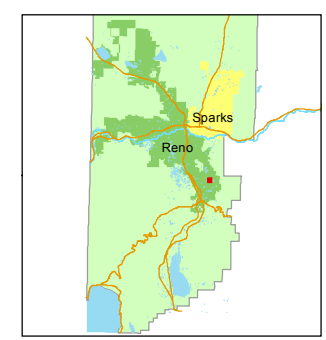
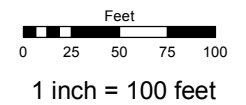
PORTION OF S 1/2 SECTION 10
T18N - R20E



Assessor's Map Number
141-18

STATE OF NEVADA
WASHOE COUNTY
ASSESSOR'S OFFICE
Joshua G. Wilson, Assessor

1001 East Ninth Street
Building D
Reno, Nevada 89512
(775) 328-2231



created by: KSB 3/07/2013
last updated: KSB 1/08/14 KSB 6/02/14
area previously shown on map(s)
141-02, 141-16

NOTE: This map was prepared for the use of the Washoe County Assessor for assessment and illustrative purposes only. It does not represent a survey of the premises. No liability is assumed as to the sufficiency or accuracy of the data delineated hereon.