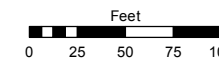


Assessor's Map Number

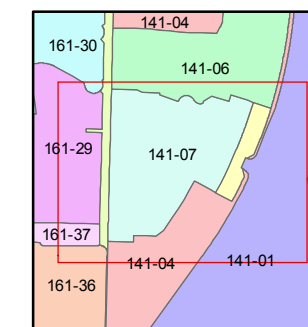
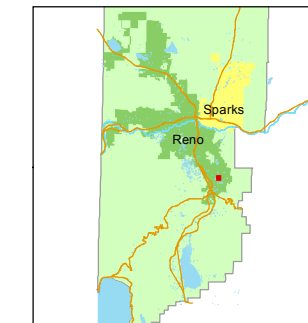
141-07

STATE OF NEVADA  
WASHOE COUNTY  
ASSESSOR'S OFFICE  
Joshua G. Wilson, Assessor

1001 East Ninth Street  
Building D  
Reno, Nevada 89512  
(775) 328-2231



1 inch = 100 feet



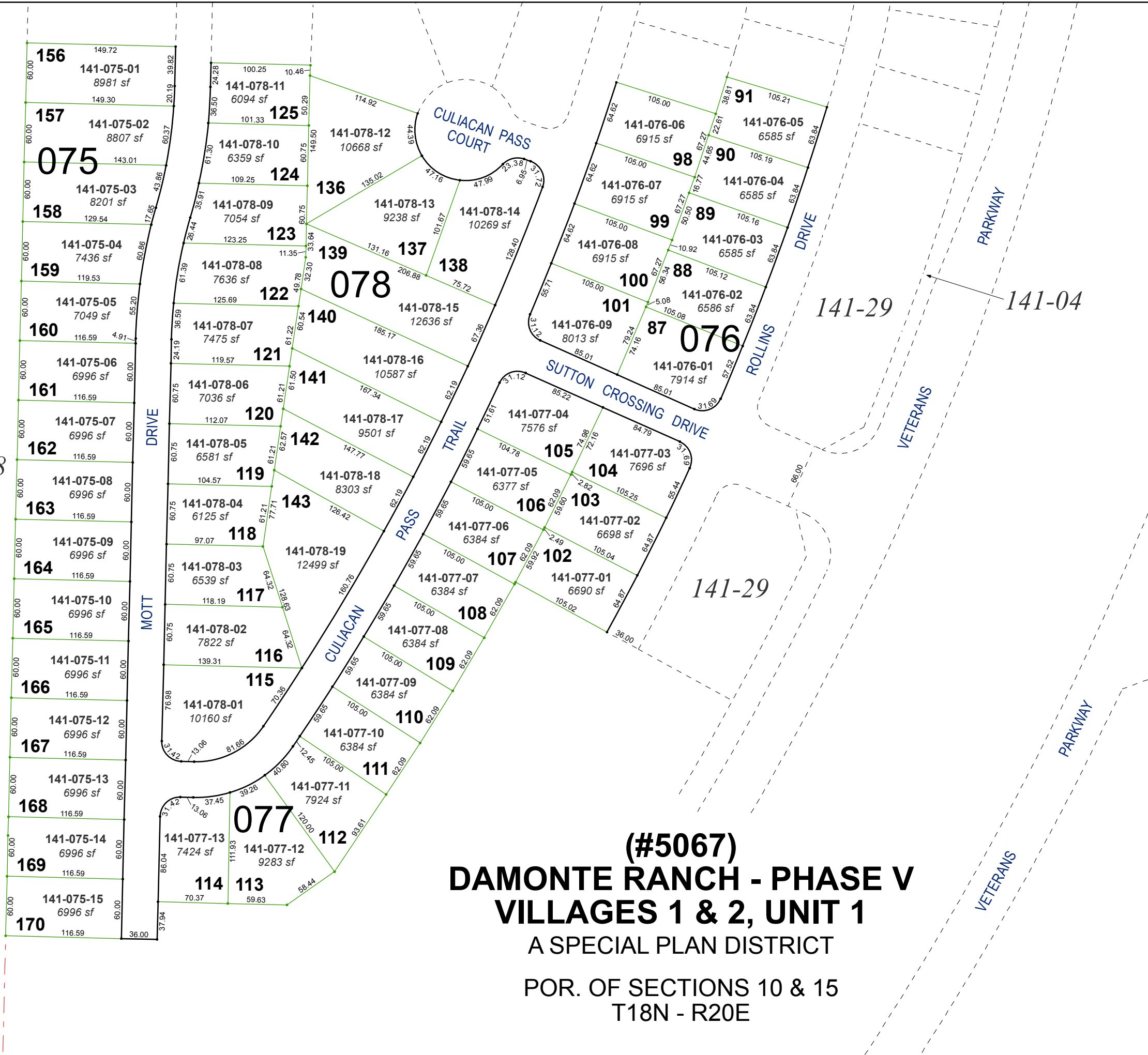
created by: KSB 4/01/2014

last updated: KSB 10/29/14

area previously shown on map(s)

141-01

NOTE: This map was prepared for the use of the Washoe County Assessor for assessment and illustrative purposes only. It does not represent a survey of the premises. No liability is assumed as to the sufficiency or accuracy of the data delineated hereon.



161-18

(#5067)  
**DAMONTE RANCH - PHASE V  
VILLAGES 1 & 2, UNIT 1**

A SPECIAL PLAN DISTRICT  
POR. OF SECTIONS 10 & 15  
T18N - R20E