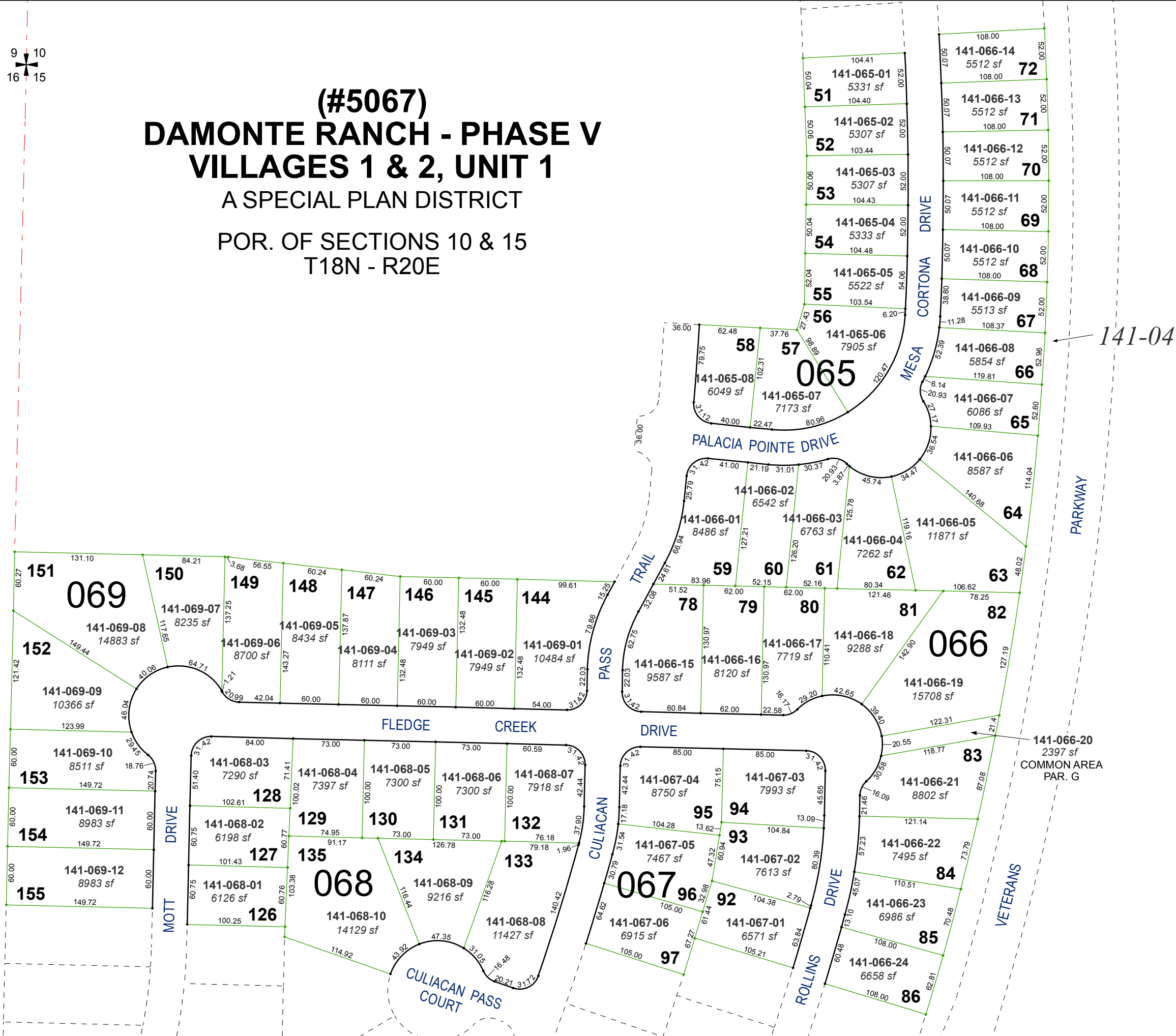




**(#5067)
DAMONTE RANCH - PHASE V
VILLAGES 1 & 2, UNIT 1**
A SPECIAL PLAN DISTRICT
POR. OF SECTIONS 10 & 15
T18N - R20E

161-18

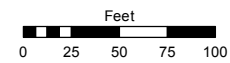


Assessor's Map Number

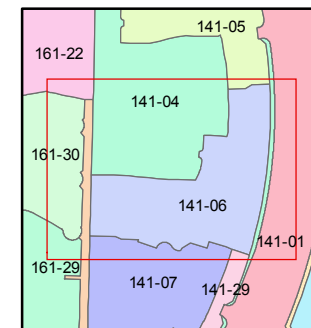
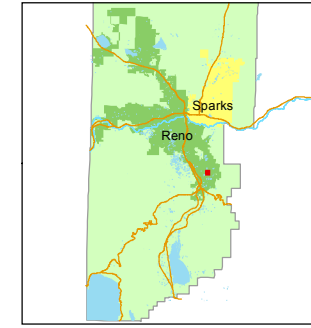
141-06

STATE OF NEVADA
WASHOE COUNTY
ASSESSOR'S OFFICE
Michael E. Clark, Assessor

1001 East Ninth Street
Building D
Reno, Nevada 89512
(775) 328-2231



1 inch = 100 feet



created by: KSB 4/01/2014

last updated: KSB 3/18/15

area previously shown on map(s)
141-01

NOTE: This map was prepared for the use of the Washoe County Assessor for assessment and illustrative purposes only. It does not represent a survey of the premises. No liability is assumed as to the sufficiency or accuracy of the data delineated hereon.