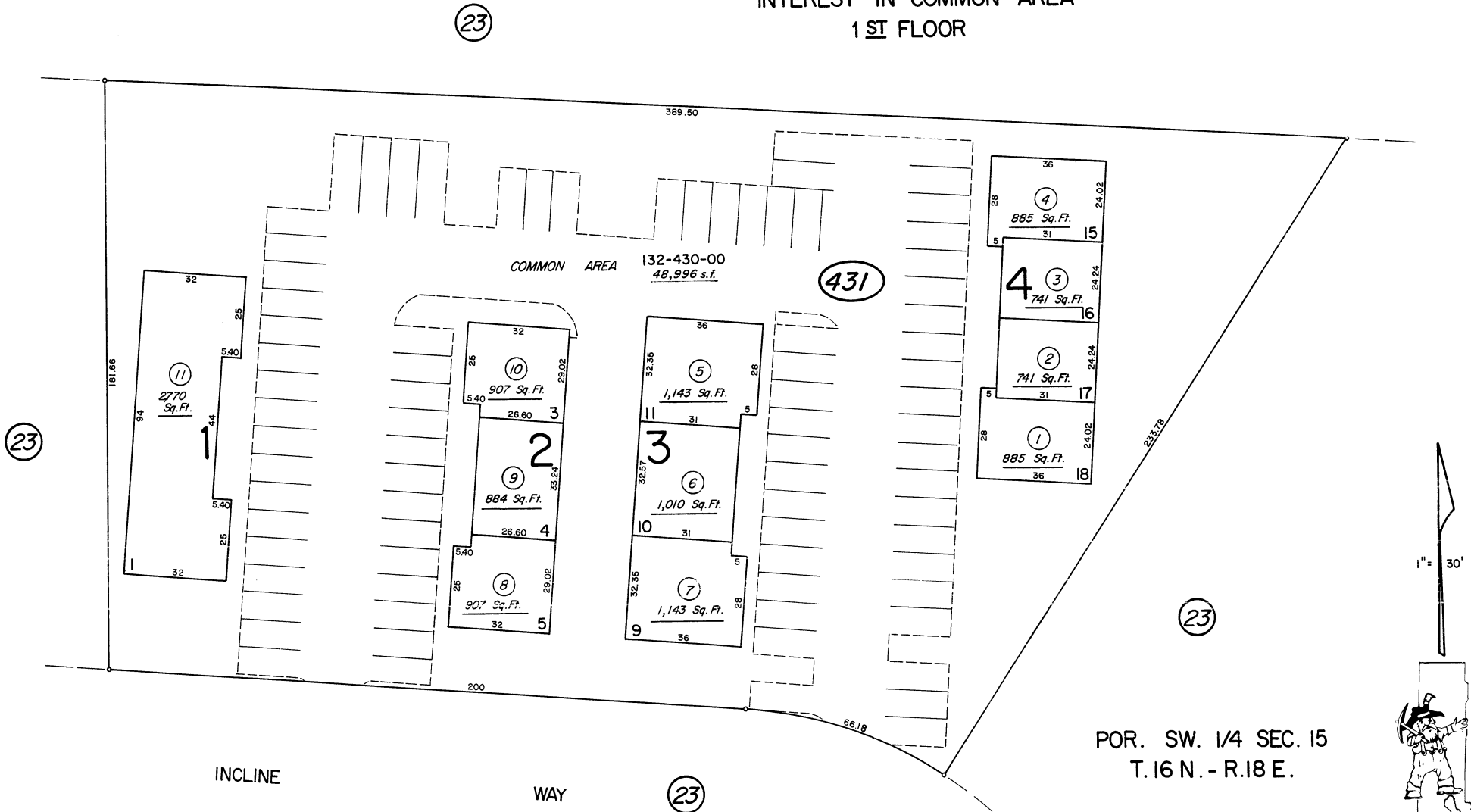


(#2208)  
**INCLINE WAY FINANCIAL CENTER**  
 A CONDOMINIUM SUBDIVISION  
 TO EACH AN UNDIVIDED 1/22 ND  
 INTEREST IN COMMON AREA  
 1<sup>ST</sup> FLOOR

132-43



1" = 30'



POR. SW. 1/4 SEC. 15  
 T. 16 N. - R. 18 E.

NOTE: This map is prepared for the use of the Washoe County Assessor for assessment and illustrative purposes only, it does not represent survey of the premises. No liability is assumed as to the sufficiency or accuracy of the data delineated hereon.

Assessor's Map County of Washoe, Nevada  
 NOTE — ASSESSOR'S BLOCK NUMBERS SHOWN IN ELLIPSES  
 ASSESSOR'S PARCEL NUMBERS SHOWN IN CIRCLES

Drawn by	G.S.	2/85
Revised by	TWT	2/26/08