

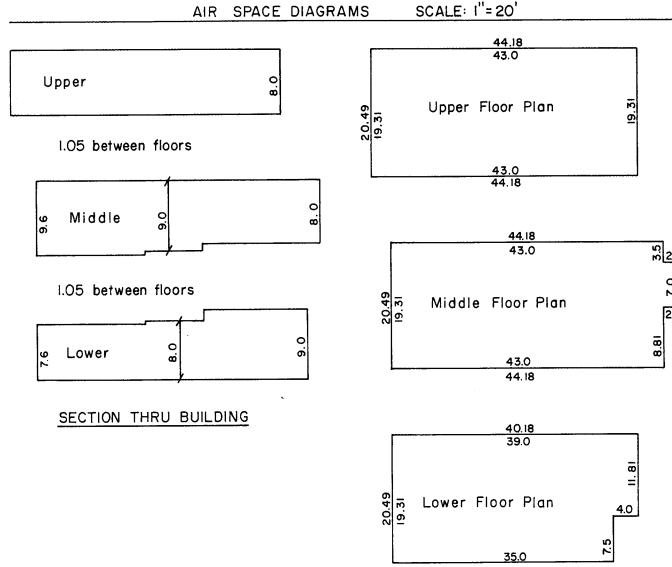
# CONDOMINIUM PARCEL MAP 1553 (Amends PM. 867)

## LOT 4, BLOCK Q, INCLINE VILLAGE UNIT NO.3.

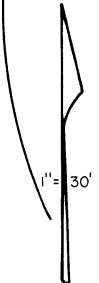
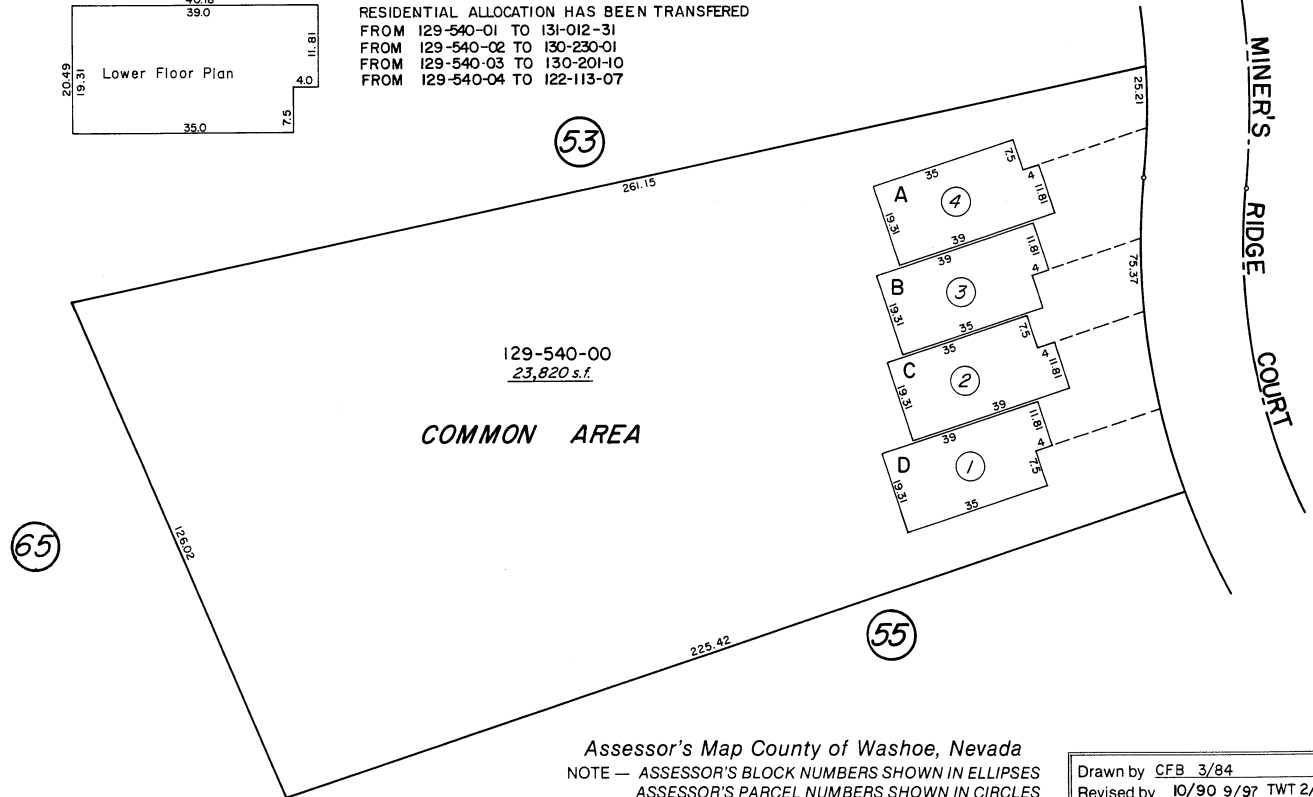
*A 1/4 INTEREST EACH IN COMMON AREA.*

NOTE: ALL PARCELS ARE RESTRICTED TO  
PERMANENT OPEN SPACE PER  
DOCUMENT NO.'S 1243859-860-861-863  
RECORDED MAY 4, 1988

RESIDENTIAL ALLOCATION HAS BEEN TRANSFERRED  
FROM 129-540-01 TO 131-012-31  
FROM 129-540-02 TO 130-230-01  
FROM 129-540-03 TO 130-201-10  
FROM 129-540-04 TO 122-113-07



SECTION THRU BUILDING



NOTE: This map is prepared for the use of the Washoe County Assessor for assessment and illustrative purposes only, it does not represent survey of the premises. No liability is assumed as to the sufficiency or accuracy of the data delineated hereon.