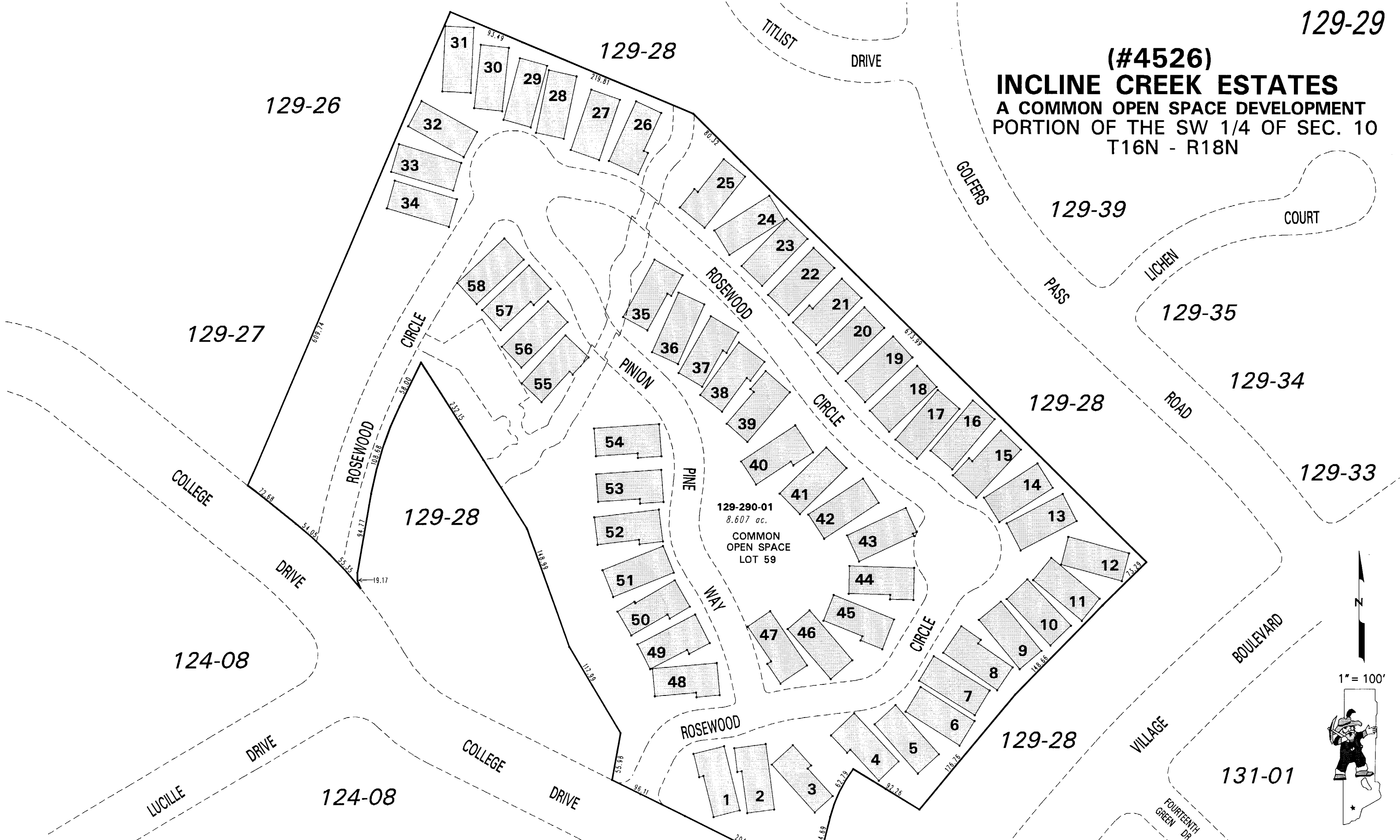


(#4526)
INCLINE CREEK ESTATES
A COMMON OPEN SPACE DEVELOPMENT
PORTION OF THE SW 1/4 OF SEC. 10
T16N - R18N



129-290-01
8.607 ac.
COMMON
OPEN SPACE
LOT 59

129-26

129-28

129-39

129-27

129-35

129-28

129-34

124-08

129-28

129-33

LUCILLE

124-08

COLLEGE

DRIVE

ROSEWOOD

129-28

VILLAGE

131-01

FOURTEENTH
GREEN
DR.

NOTE: This map is prepared for the use of the Washoe County Assessor for assessment and illustrative purposes only. It does not represent a survey of the premises. No liability is assumed as to the sufficiency or the accuracy of the data delineated hereon.

Office of Washoe County Assessor, Nevada - Robert W. McGowan

This area previously shown on 129-28

NOTE: Areas of parcels which are less than 2 acres are shown in square feet.

Drawn by PK 09/15/05
Revised

