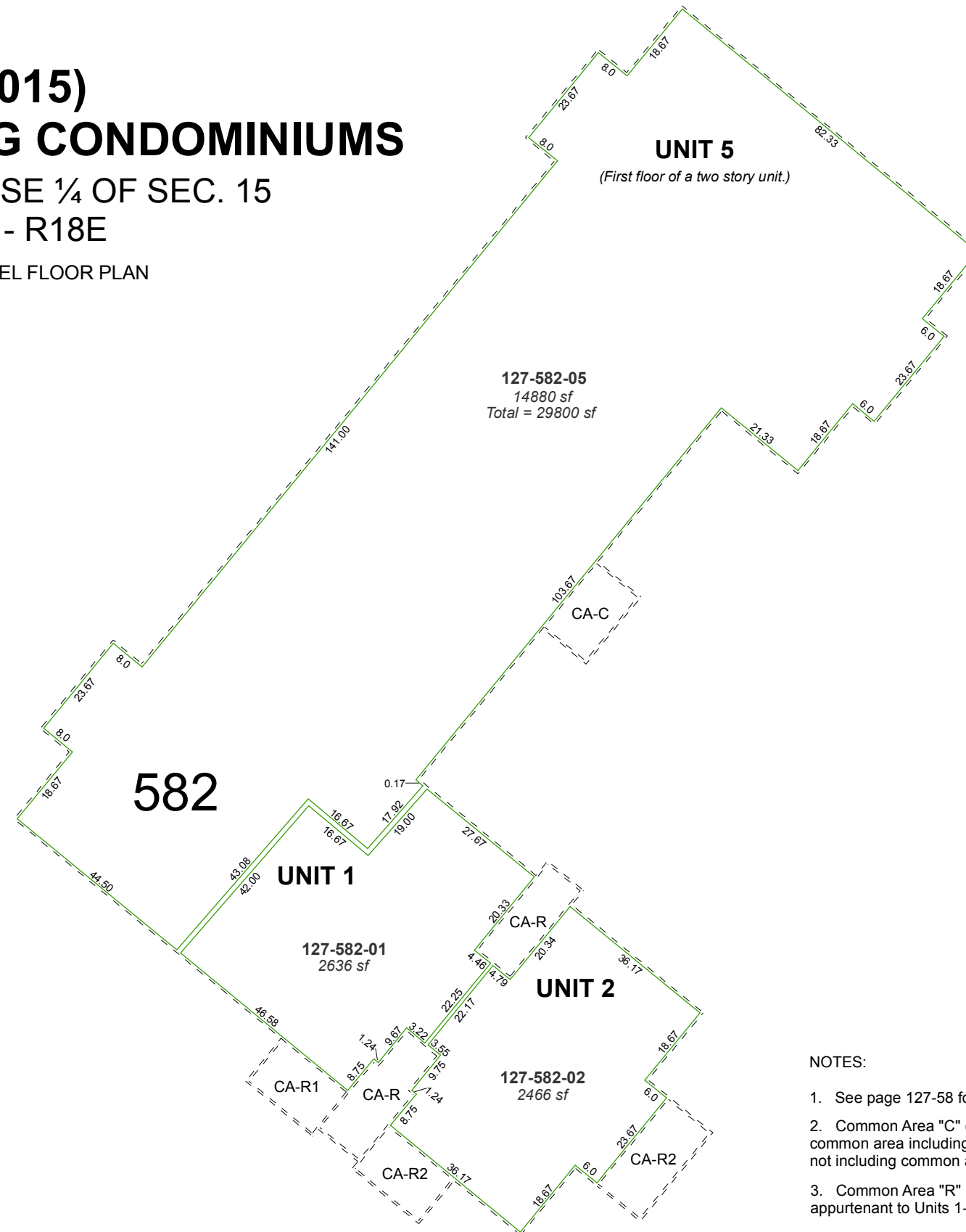


(#4015)
EAGLES LANDING CONDOMINIUMS

A POR. OF THE SE ¼ OF SEC. 15
 T16N - R18E

SECOND LEVEL FLOOR PLAN



127-582-05
 14880 sf
 Total = 29800 sf

127-582-01
 2636 sf

127-582-02
 2466 sf

NOTES:

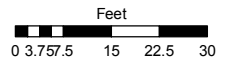
1. See page 127-58 for Common Area parcel.
2. Common Area "C" (CA-C) denotes entire first level common area including area appurtenant to Unit 5, but not including common areas appurtenant to Units 1-4
3. Common Area "R" (CA-R) denotes common areas appurtenant to Units 1-4 only.

Assessor's Map Number

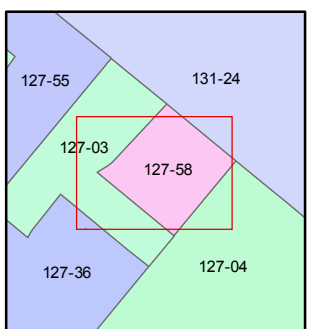
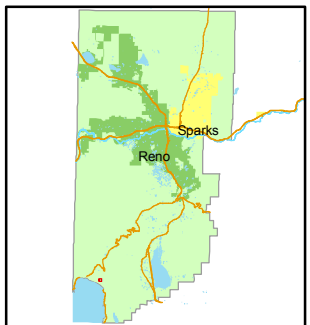
127-58-S2

STATE OF NEVADA
WASHOE COUNTY
ASSESSOR'S OFFICE
 Joshua G. Wilson, Assessor

1001 East Ninth Street
 Building D
 Reno, Nevada 89512
 (775) 328-2231



1 inch = 30 feet



created by: NLH 8/02/2010

last updated: _____

area previously shown on map(s)

127-03

NOTE: This map was prepared for the use of the Washoe County Assessor for assessment and illustrative purposes only. It does not represent a survey of the premises. No liability is assumed as to the sufficiency or accuracy of the data delineated herein.