

TYROLIAN VILLAGE UNIT NO. 3
A TOWNHOUSE
PORTION OF SE⁴-SECTION 11 T16N-R18E

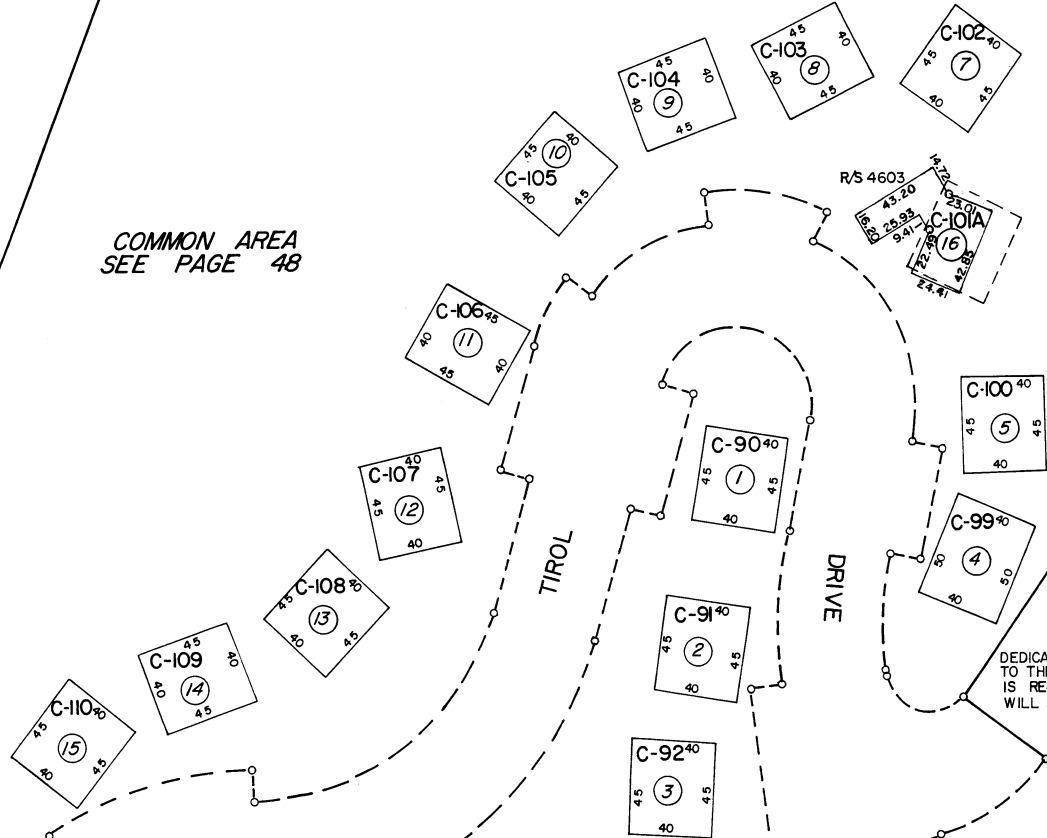
41

UNITS ONLY

02

PARCEL "N"

COMMON AREA
SEE PAGE 48

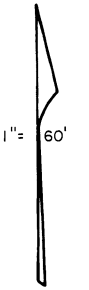


PARCEL "P"

50

41

DEDICATION OF ALL STREETS
TO THE COUNTY OF WASHOE
IS REJECTED, BUT OFFER
WILL REMAIN OPEN.



NOTE: This map is prepared for the use of the Washoe County Assessor for assessment and illustrative purposes only. It does not represent survey of the premises. No liability is assumed as to the sufficiency or accuracy of the data delineated hereon.

Assessor's Map County of Washoe, Nevada
NOTE — ASSESSOR'S BLOCK NUMBERS SHOWN IN ELLIPSES
ASSESSOR'S PARCEL NUMBERS SHOWN IN CIRCLES

Drawn by BT 9/69
Revised by BT 10/85 TWT 8/5/05