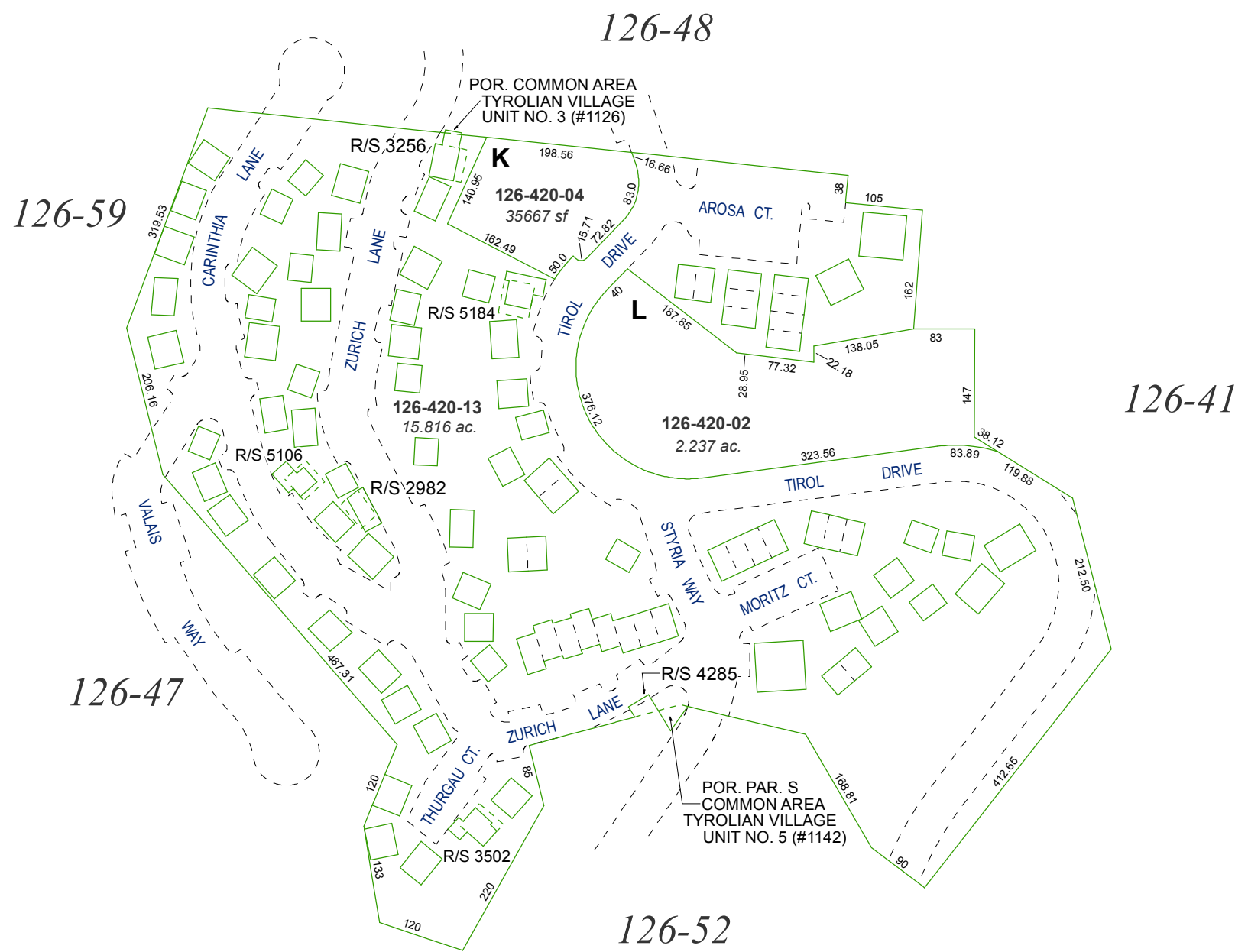


**(#1045)  
TYROLIAN VILLAGE UNIT NO. 1  
A TOWNHOUSE**

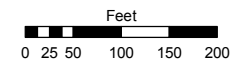
PORTION OF NE 1/4 SECTION 14, T16N - R18E

UNITS SHOWN ON PAGES 43 - 46

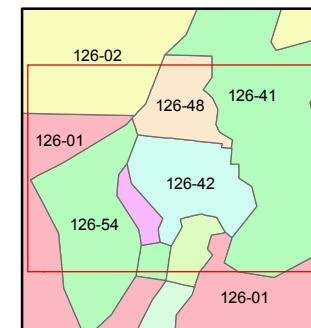
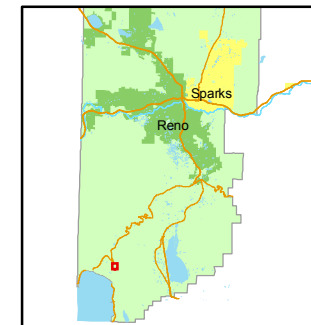


STATE OF NEVADA  
**WASHOE COUNTY**  
ASSESSOR'S OFFICE  
Joshua G. Wilson, Assessor

1001 East Ninth Street  
Building D  
Reno, Nevada 89512  
(775) 328-2231



1 inch = 200 feet



created by: KSB 9/30/09

last updated: \_\_\_\_\_

area previously shown on map(s)  
124-42

NOTE: This map was prepared for the use of the Washoe County Assessor for assessment and illustrative purposes only. It does not represent a survey of the premises. No liability is assumed as to the sufficiency or accuracy of the data delineated hereon.