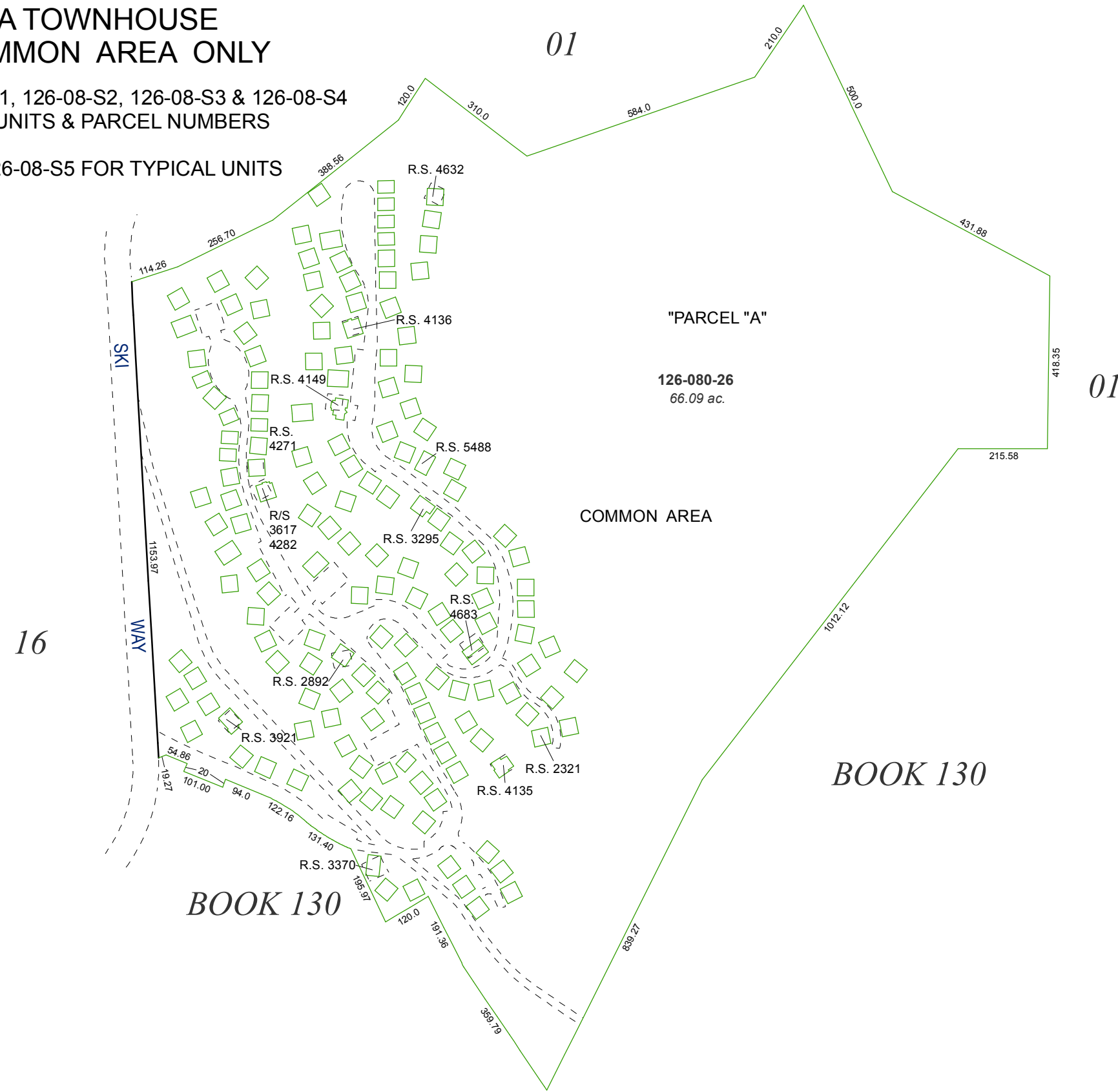


(#1395)
AMENDED TYROLIAN
VILLAGE UNIT NO. 7

A TOWNHOUSE
COMMON AREA ONLY

SEE 126-08-S1, 126-08-S2, 126-08-S3 & 126-08-S4
FOR UNITS & PARCEL NUMBERS

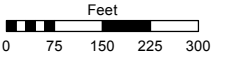
SEE 126-08-S5 FOR TYPICAL UNITS



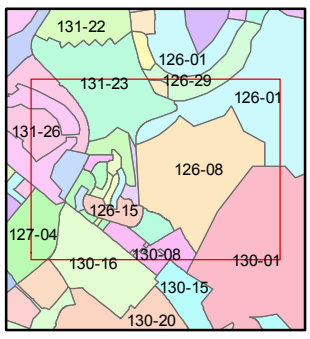
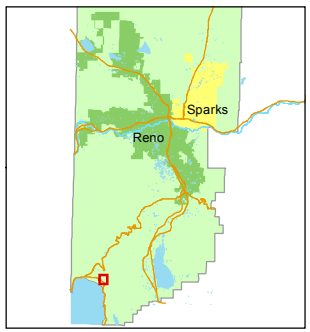
Assessor's Map Number
126-08

STATE OF NEVADA
WASHOE COUNTY
ASSESSOR'S OFFICE
Joshua G. Wilson, Assessor

1001 East Ninth Street
Building D
Reno, Nevada 89512
(775) 328-2231



1 inch = 300 feet



created by: CFB 06/08/2013

last updated: _____

area previously shown on map(s)

NOTE: This map was prepared for the use of the Washoe County Assessor for assessment and illustrative purposes only. It does not represent a survey of the premises. No liability is assumed as to the sufficiency or accuracy of the data delineated hereon.