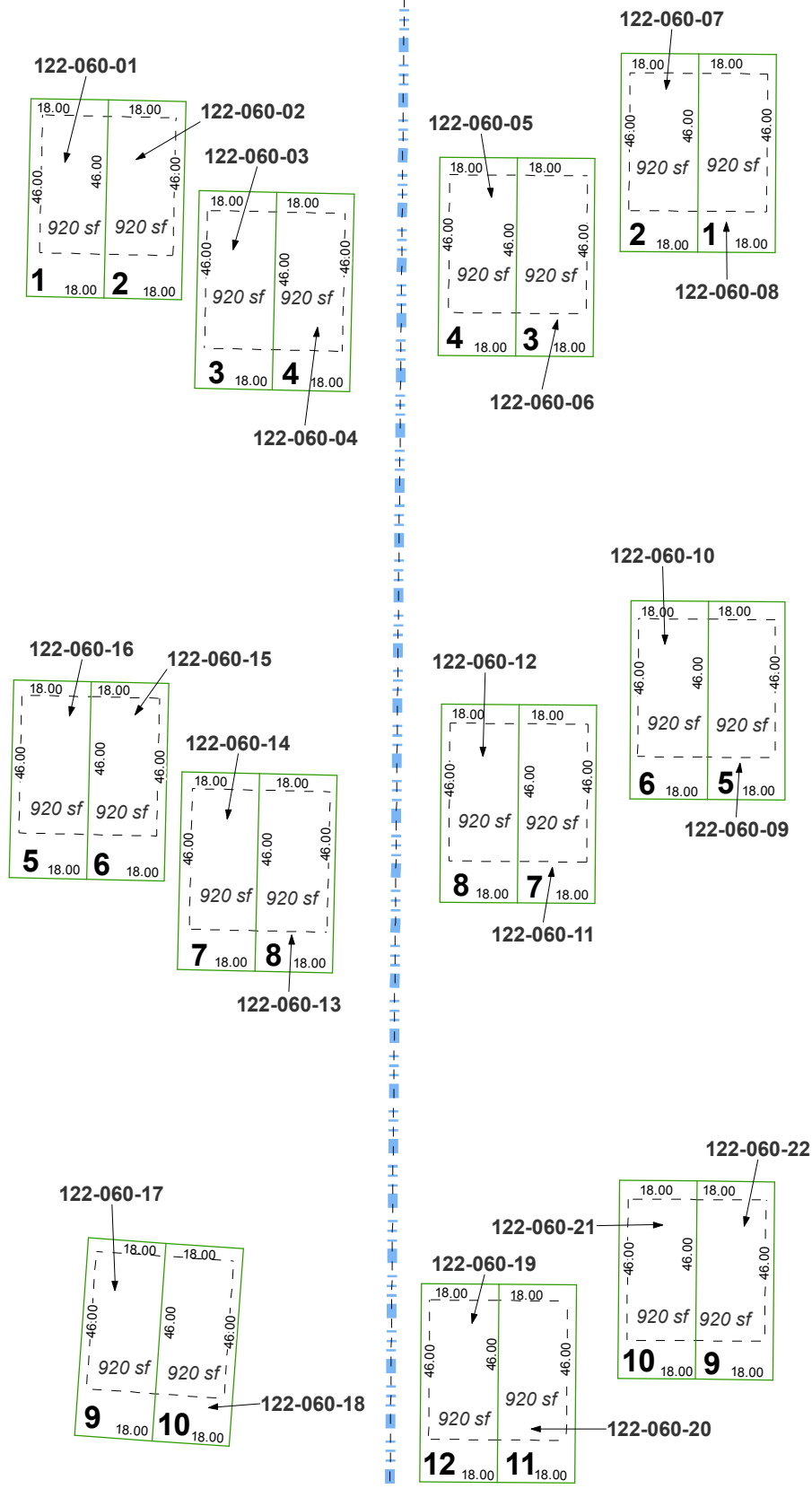


**(#979)**  
**CRYSTAL SHORES VILLAS**  
**UNIT NO. 2**  
 A CONDOMINIUM

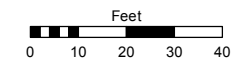


**(#978)**  
**CRYSTAL SHORES**  
**VILLAS UNIT NO. 1**  
 A CONDOMINIUM  
 PORTION OF SE 1/4  
 SEC. 17 T16N - R18E

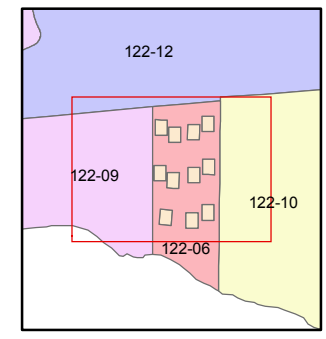
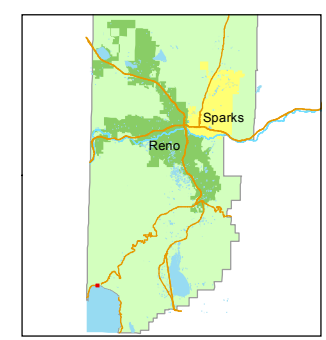
Assessor's Map Number  
**122-06-S1**

STATE OF NEVADA  
**WASHOE COUNTY**  
**ASSESSOR'S OFFICE**  
 Joshua G. Wilson, Assessor

1001 East Ninth Street  
 Building D  
 Reno, Nevada 89512  
 (775) 328-2231



1 inch = 40 feet



created by: CFB 09/14/2011

last updated: \_\_\_\_\_

area previously shown on map(s)  
 \_\_\_\_\_

NOTE: This map was prepared for the use of the Washoe County Assessor for assessment and illustrative purposes only. It does not represent a survey of the premises. No liability is assumed as to the sufficiency or accuracy of the data delineated hereon.