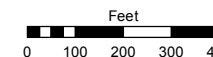


Assessor's Map Number

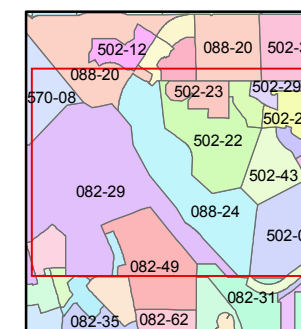
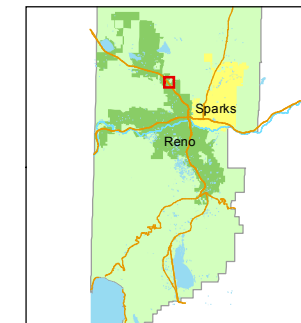
**088-24**

STATE OF NEVADA  
**WASHOE COUNTY**  
ASSESSOR'S OFFICE  
Joshua G. Wilson, Assessor

1001 East Ninth Street  
Building D  
Reno, Nevada 89512  
(775) 328-2231



1 inch = 400 feet



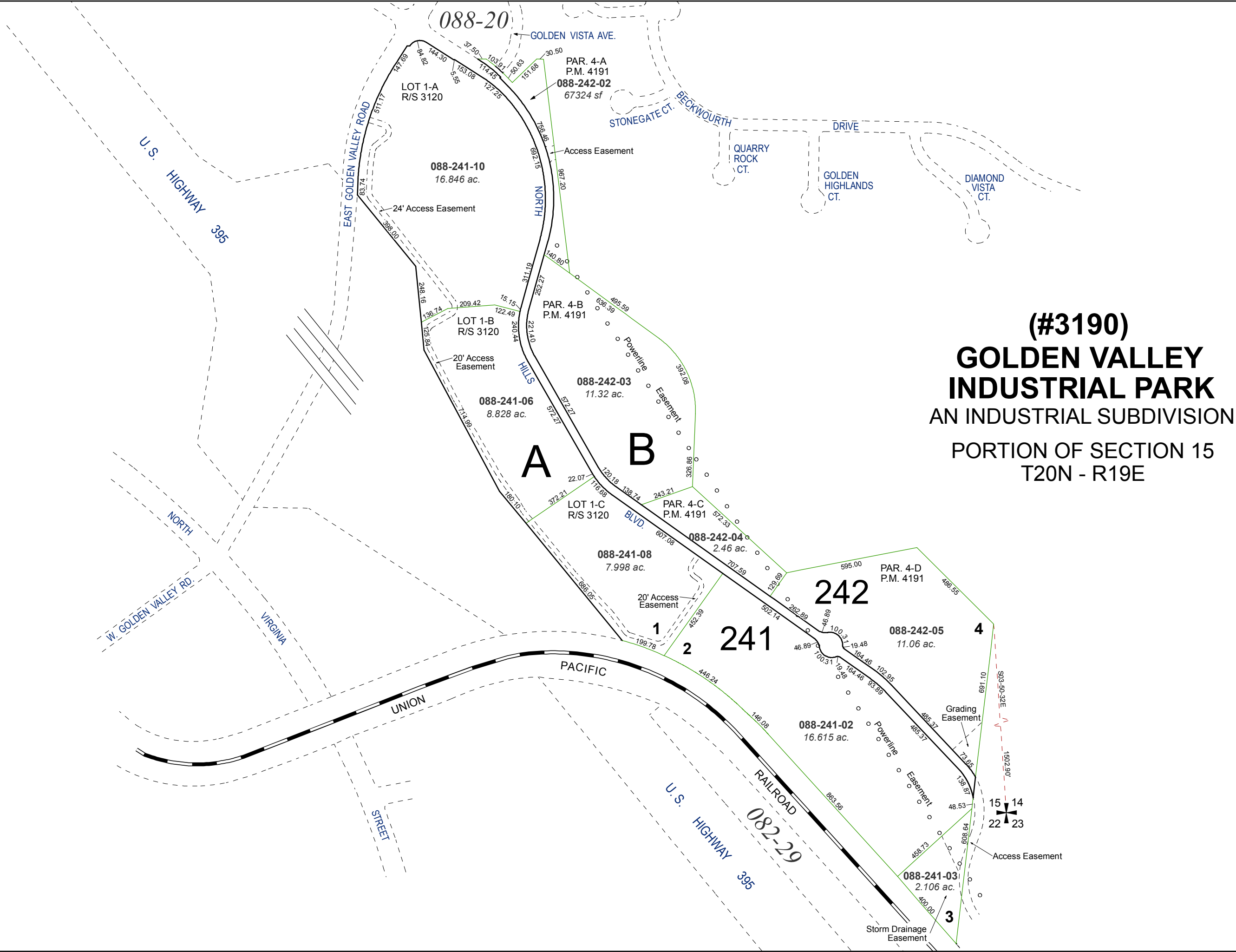
created by: KSB 3/20/2012

last updated: \_\_\_\_\_

area previously shown on map(s)

088-23

NOTE: This map was prepared for the use of the Washoe County Assessor for assessment and illustrative purposes only. It does not represent a survey of the premises. No liability is assumed as to the sufficiency or accuracy of the data delineated hereon.



**(#3190)**  
**GOLDEN VALLEY INDUSTRIAL PARK**  
AN INDUSTRIAL SUBDIVISION  
PORTION OF SECTION 15  
T20N - R19E