

**(#3970)
WOODLAND VILLAGE
PHASE 4**

**PORTIONS OF THE N1/2 AND
THE SE 1/4 OF SECTION 16
T21N - R18E**

BOOK 556

VILLAGE PARKWAY

VILLAGE PARKWAY

087-67

GEORGETOWN DRIVE

GEORGETOWN COURT

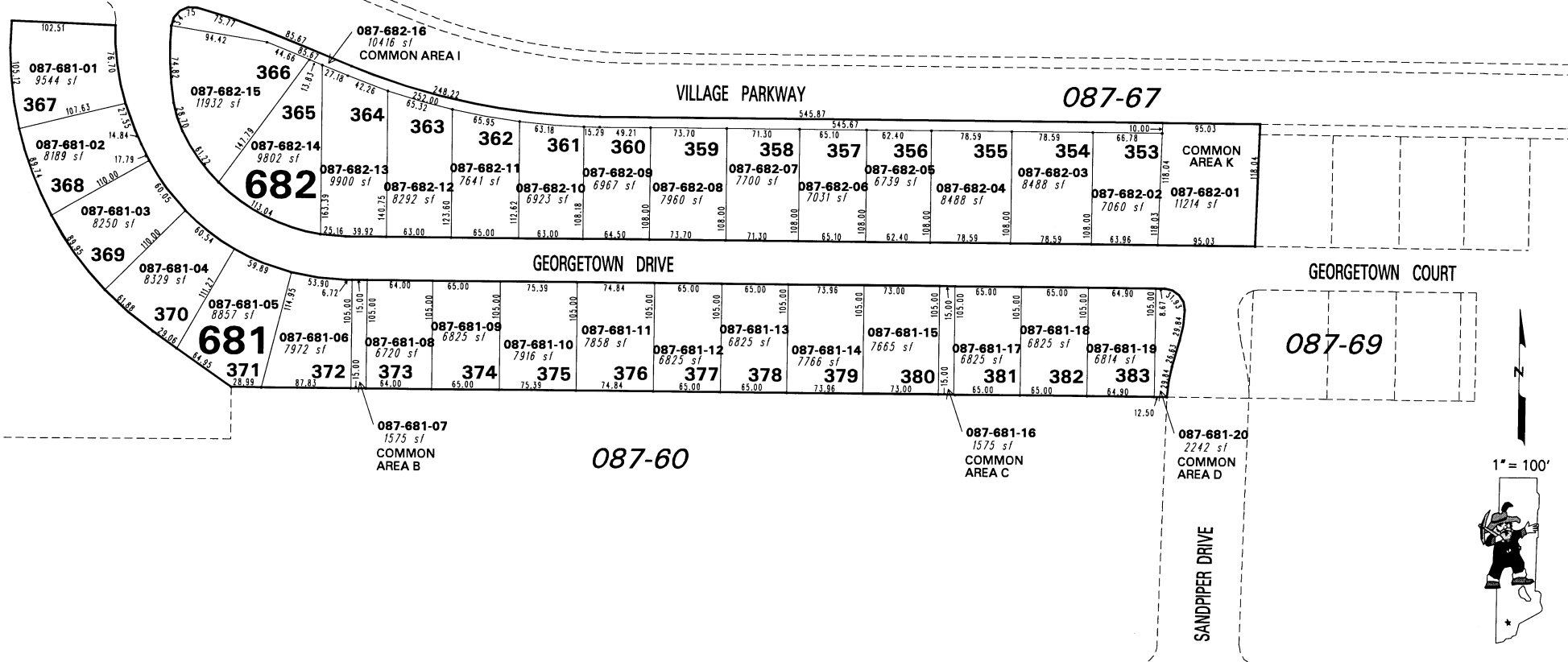
087-67

087-69

087-60



1" = 100'



NOTE: This map is prepared for the use of the Washoe County Assessor for assessment and illustrative purposes only. It does not represent a survey of the premises. No liability is assumed as to the sufficiency or the accuracy of the data delineated hereon.

Office of Washoe County Assessor, Nevada - Robert W. McGowan

This area previously shown on 087-02

NOTE: Areas of parcels which are less than 2 acres are shown in square feet.

Drawn by HCS 7/23/01
Revised HCS 11/27/01 HCS 4/12/02
HCS 1/8/03