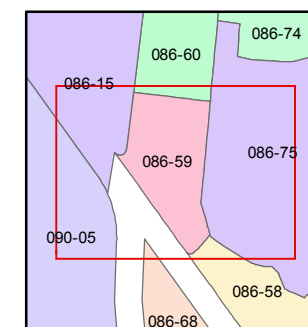
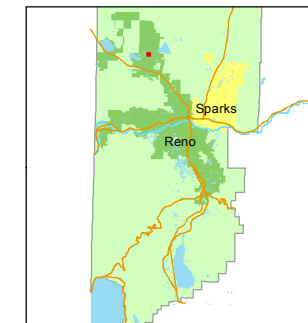


STATE OF NEVADA
WASHOE COUNTY
ASSESSOR'S OFFICE
Joshua G. Wilson, Assessor

1001 East Ninth Street
Building D
Reno, Nevada 89512
(775) 328-2231



1 inch = 60 feet



created by: EMG 7/16/2014

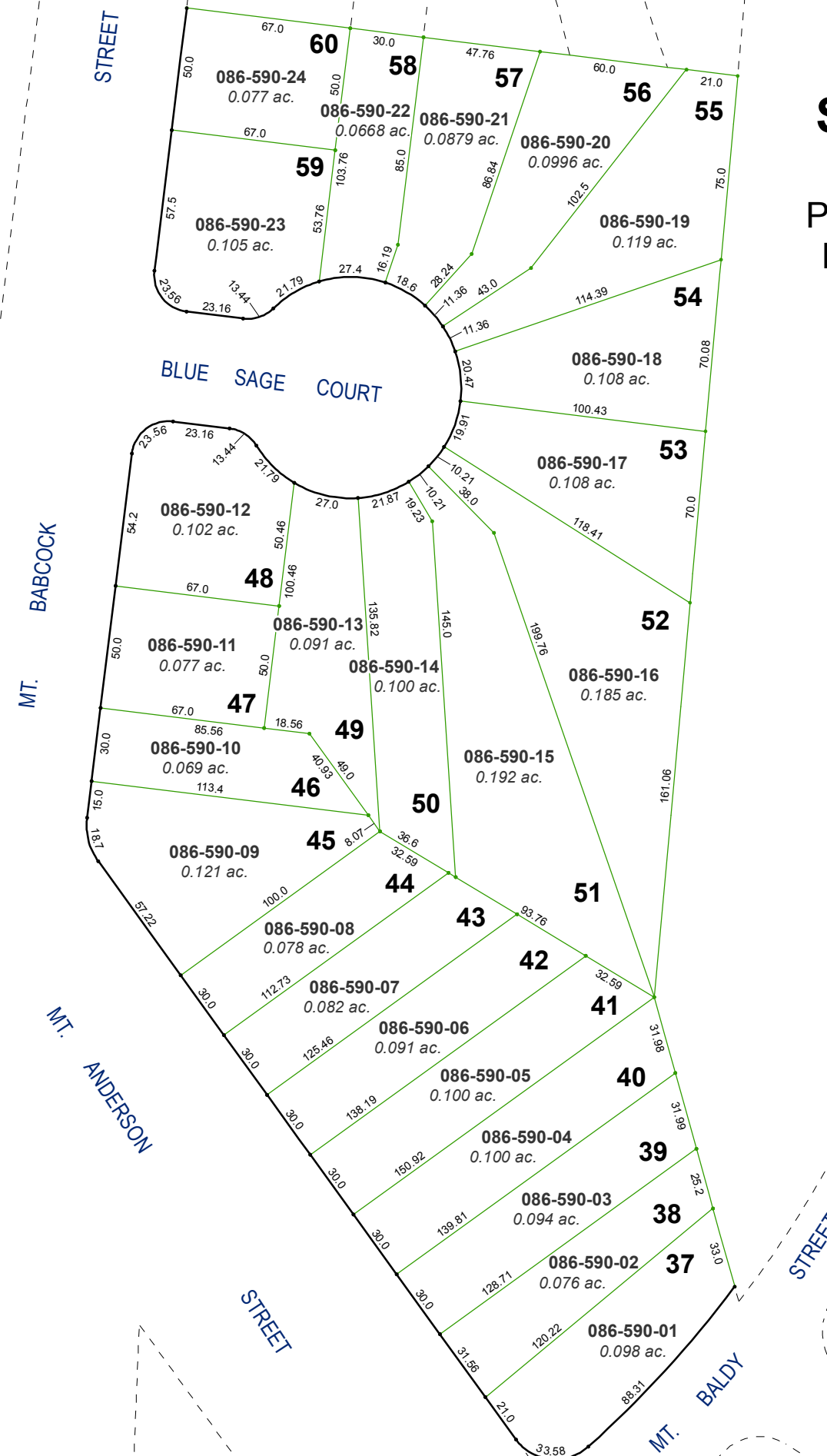
last updated: _____

area previously shown on map(s)

NOTE: This map was prepared for the use of the Washoe County Assessor for assessment and illustrative purposes only. It does not represent a survey of the premises. No liability is assumed as to the sufficiency or accuracy of the data delineated hereon.

(#1657) SIERRA SAGE ESTATES, II

A DENSITY SUBDIVISION
PORTION OF THE SW ¼ SECTION 29 &
PORTION OF THE NW ¼ SECTION 32
T21N - R19E



Lot #	Assessor's Map #	Acreage
01	086-590-01	0.098 ac.
02	086-590-02	0.076 ac.
03	086-590-03	0.094 ac.
04	086-590-04	0.100 ac.
05	086-590-05	0.100 ac.
06	086-590-06	0.091 ac.
07	086-590-07	0.082 ac.
08	086-590-08	0.078 ac.
09	086-590-09	0.121 ac.
10	086-590-10	0.069 ac.
11	086-590-11	0.077 ac.
12	086-590-12	0.102 ac.
13	086-590-13	0.091 ac.
14	086-590-14	0.100 ac.
15	086-590-15	0.192 ac.
16	086-590-16	0.185 ac.
17	086-590-17	0.108 ac.
18	086-590-18	0.108 ac.
19	086-590-19	0.119 ac.
20	086-590-20	0.0996 ac.
21	086-590-21	0.0879 ac.
22	086-590-22	0.0668 ac.
23	086-590-23	0.105 ac.
24	086-590-24	0.077 ac.
25		
26		
27		
28		
29		
30		
31		
32		
33		
34		
35		
36		
37		
38		
39		
40		
41		
42		
43		
44		
45		
46		
47		
48		
49		
50		
51		
52		
53		
54		
55		
56		
57		
58		
59		
60		