

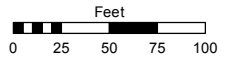
PORTION OF N½ OF SE¼ OF NW¼ OF SEC. 18
T20N - R20E

Assessor's Map Number

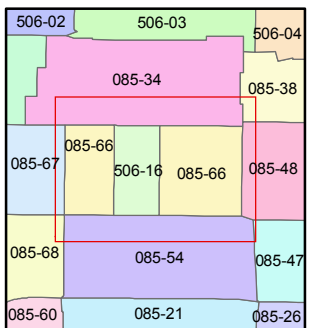
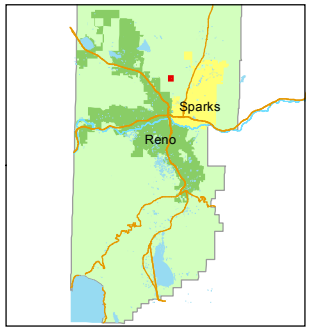
085-66

STATE OF NEVADA
WASHOE COUNTY
ASSESSOR'S OFFICE
Joshua G. Wilson, Assessor

1001 East Ninth Street
Building D
Reno, Nevada 89512
(775) 328-2231



1 inch = 100 feet



created by: TWT 7/21/2011

last updated: TWT 3/20/2012

area previously shown on map(s)

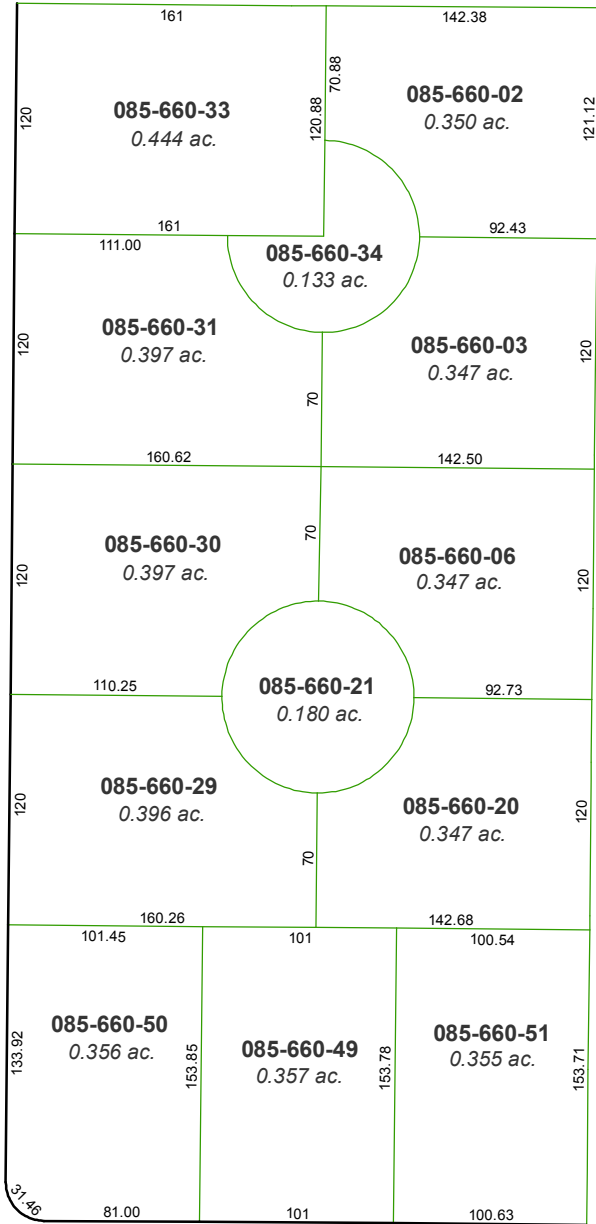
NOTE: This map was prepared for the use of the Washoe County Assessor for assessment and illustrative purposes only. It does not represent a survey of the premises. No liability is assumed as to the sufficiency or accuracy of the data delineated hereon.

HARMONY LANE

DRIVE

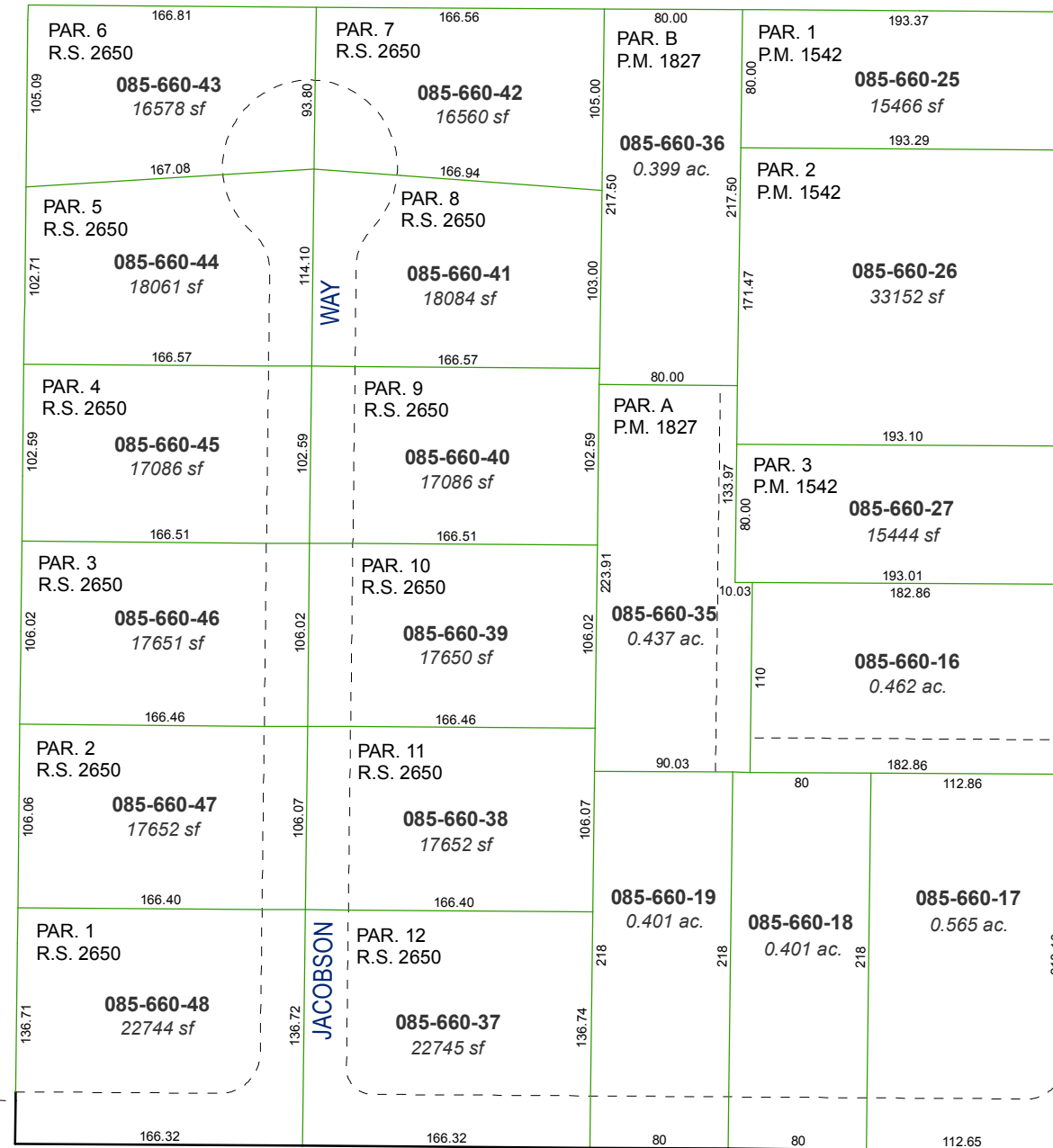
SIDEHILL

MINERAL



COURT

MAYO



EIGHTH AVENUE

BLVD.

VALLEY

SUN

AVENUE