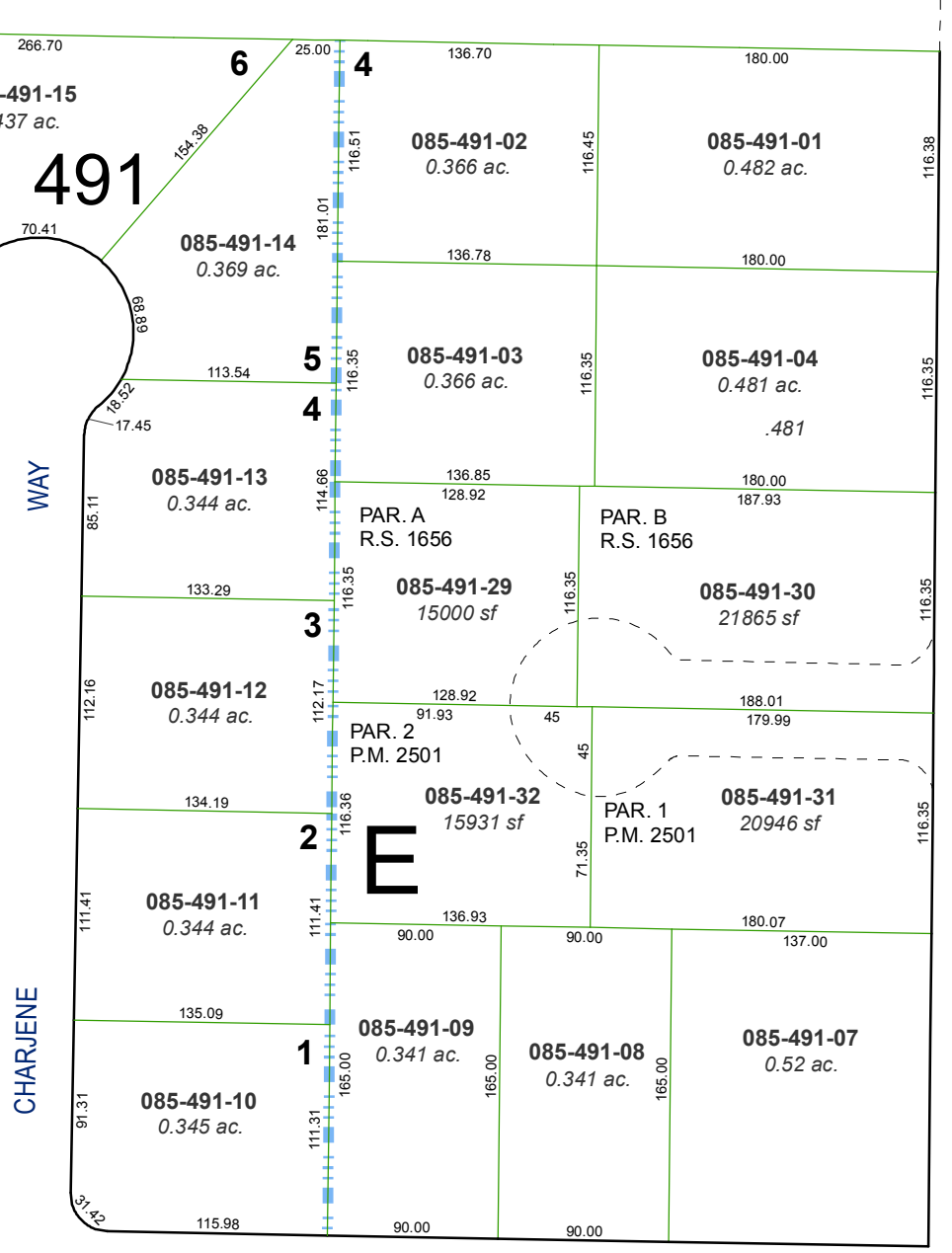
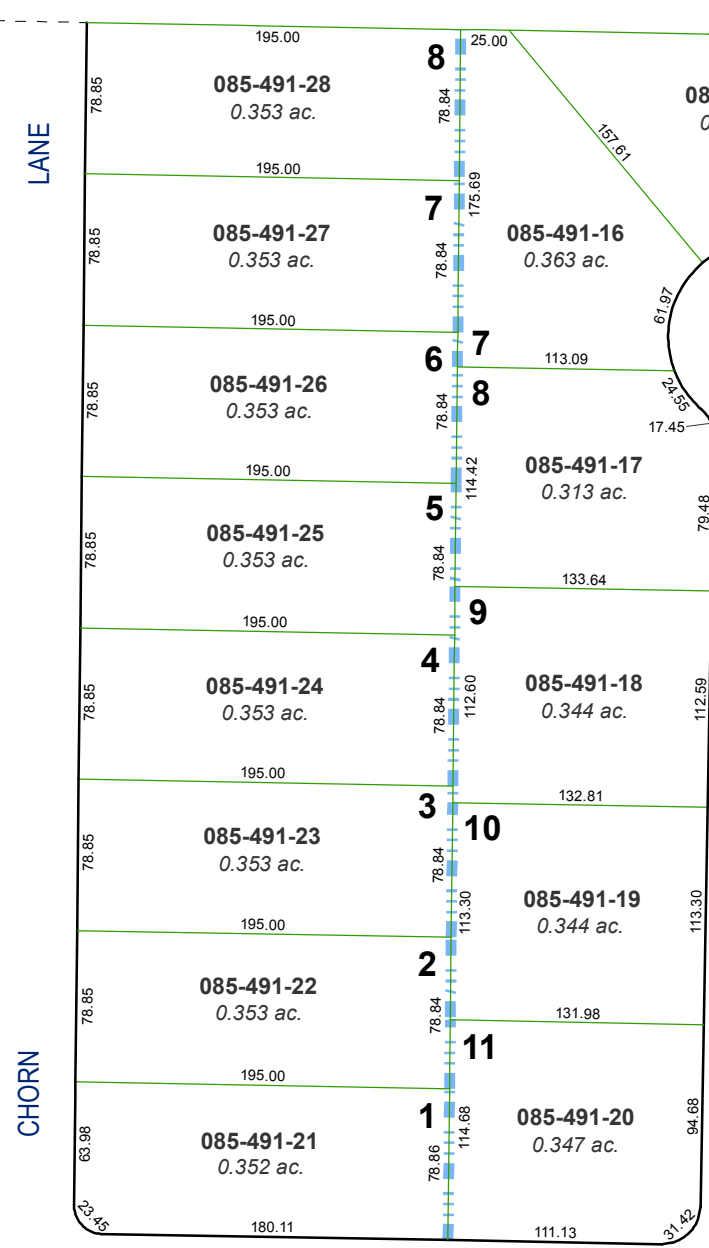
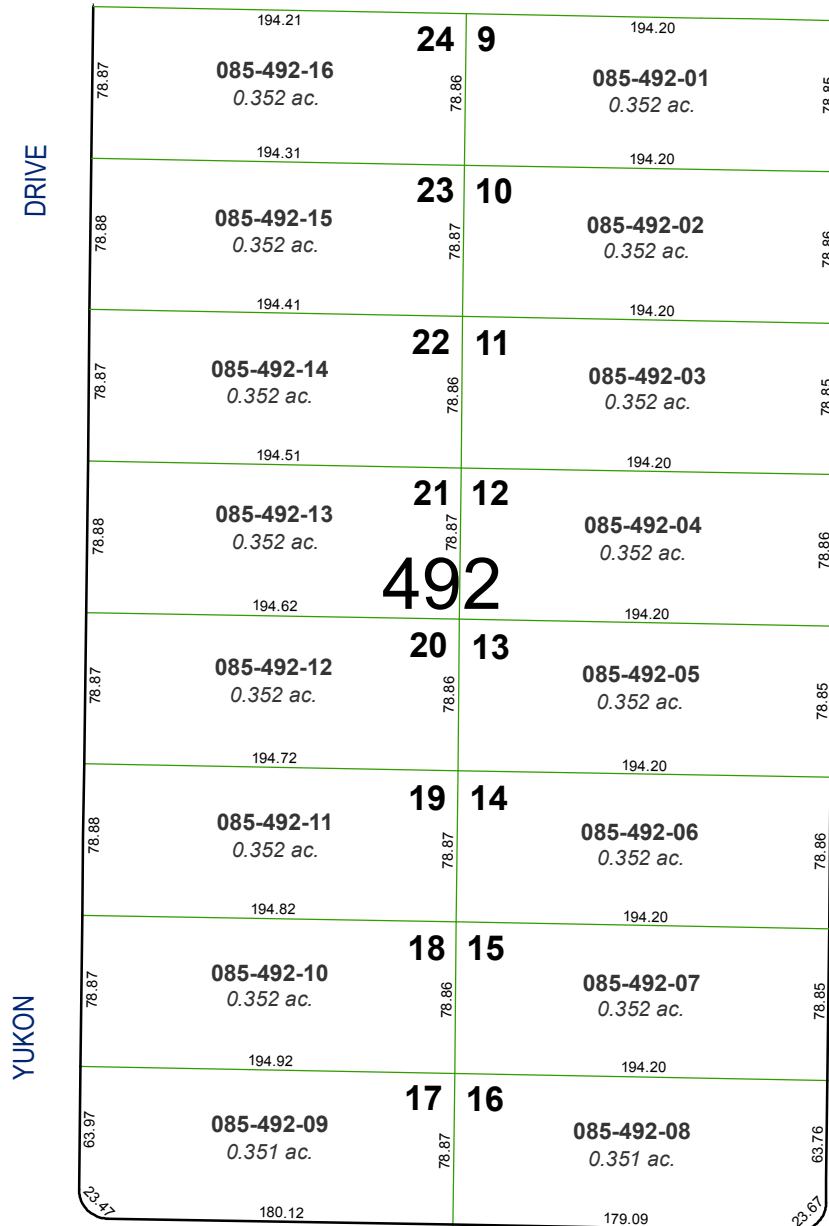


SOUTH 1/2 OF SE 1/4 OF NW 1/4 OF SEC. 17
T20N - R20E

**(#1510)
CHORN SUBDIVISION**

**(#1471)
CHARJENE
SUBDIVISION**

**(#573)
SUN VALLEY
SUBDIVISION No. 5**



EAST

SEVENTH

AVENUE

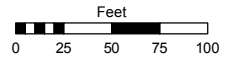
CENTER
SEC. 17

Assessor's Map Number

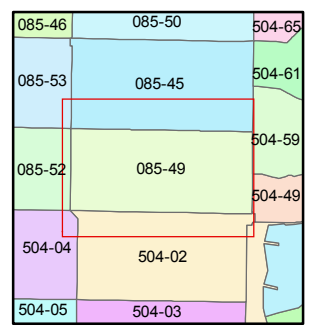
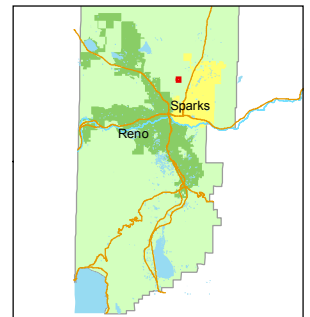
085-49

STATE OF NEVADA
WASHOE COUNTY
ASSESSOR'S OFFICE
Joshua G. Wilson, Assessor

1001 East Ninth Street
Building D
Reno, Nevada 89512
(775) 328-2231



1 inch = 100 feet



created by: TWT 7/15/2011

last updated: TWT 6/20/2013

area previously shown on map(s)

NOTE: This map was prepared for the use of the Washoe County Assessor for assessment and illustrative purposes only. It does not represent a survey of the premises. No liability is assumed as to the sufficiency or accuracy of the data delineated hereon.