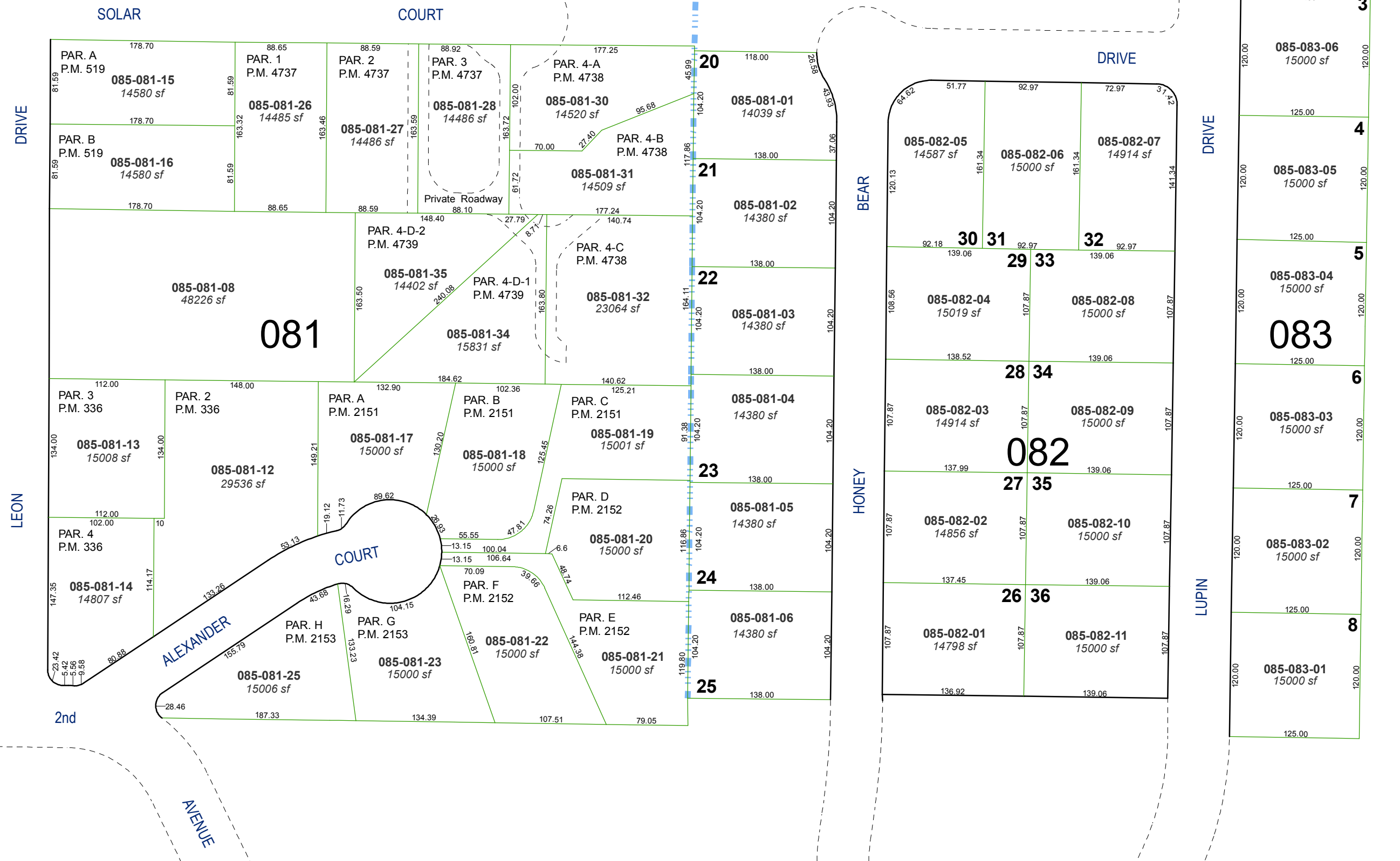


# (#1168) BRUCE SUBDIVISION NO. 3 A PORTION OF THE SE 1/4 OF SEC. 19 T20N - R20E



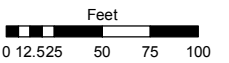
19 | 20

N 00-06-38 E  
602.87'

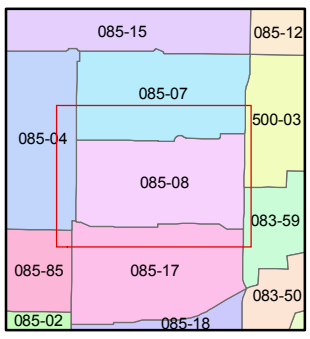
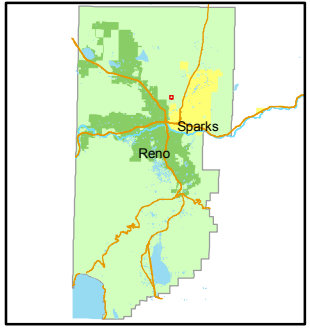
Assessor's Map Number  
**085-08**

STATE OF NEVADA  
**WASHOE COUNTY  
ASSESSOR'S OFFICE**  
Joshua G. Wilson, Assessor

1001 East Ninth Street  
Building D  
Reno, Nevada 89512  
(775) 328-2231



1 inch = 100 feet



created by: NLH 8/12/2010  
last updated: \_\_\_\_\_  
area previously shown on map(s) \_\_\_\_\_

NOTE: This map was prepared for the use of the Washoe County Assessor for assessment and illustrative purposes only. It does not represent a survey of the premises. No liability is assumed as to the sufficiency or accuracy of the data delineated hereon.