

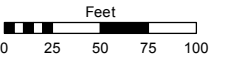
(#398)
SUN VALLEY SUBDIVISION
 PORTION OF THE SOUTHEAST 1/4
 OF SECTION 19
 T20N - R20E

Assessor's Map Number

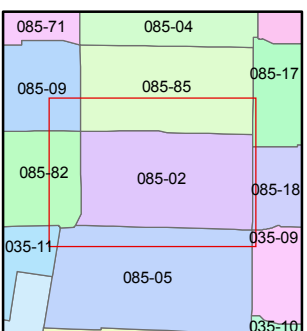
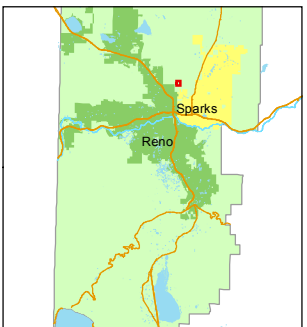
085-02

STATE OF NEVADA
WASHOE COUNTY
ASSESSOR'S OFFICE
 Joshua G. Wilson, Assessor

1001 East Ninth Street
 Building D
 Reno, Nevada 89512
 (775) 328-2231



1 inch = 100 feet



created by: TWT 9/30/2011

last updated: _____

area previously shown on map(s) _____

NOTE: This map was prepared for the use of the Washoe County Assessor for assessment and illustrative purposes only. It does not represent a survey of the premises. No liability is assumed as to the sufficiency or accuracy of the data delineated hereon.

BLVD.

VALLEY

SUN

WEST
FIRST
AVENUE

19
30

EAST

PROSSER
WAY

FIRST

DRIVE

CAROL

AVENUE

DRIVE

LEON

