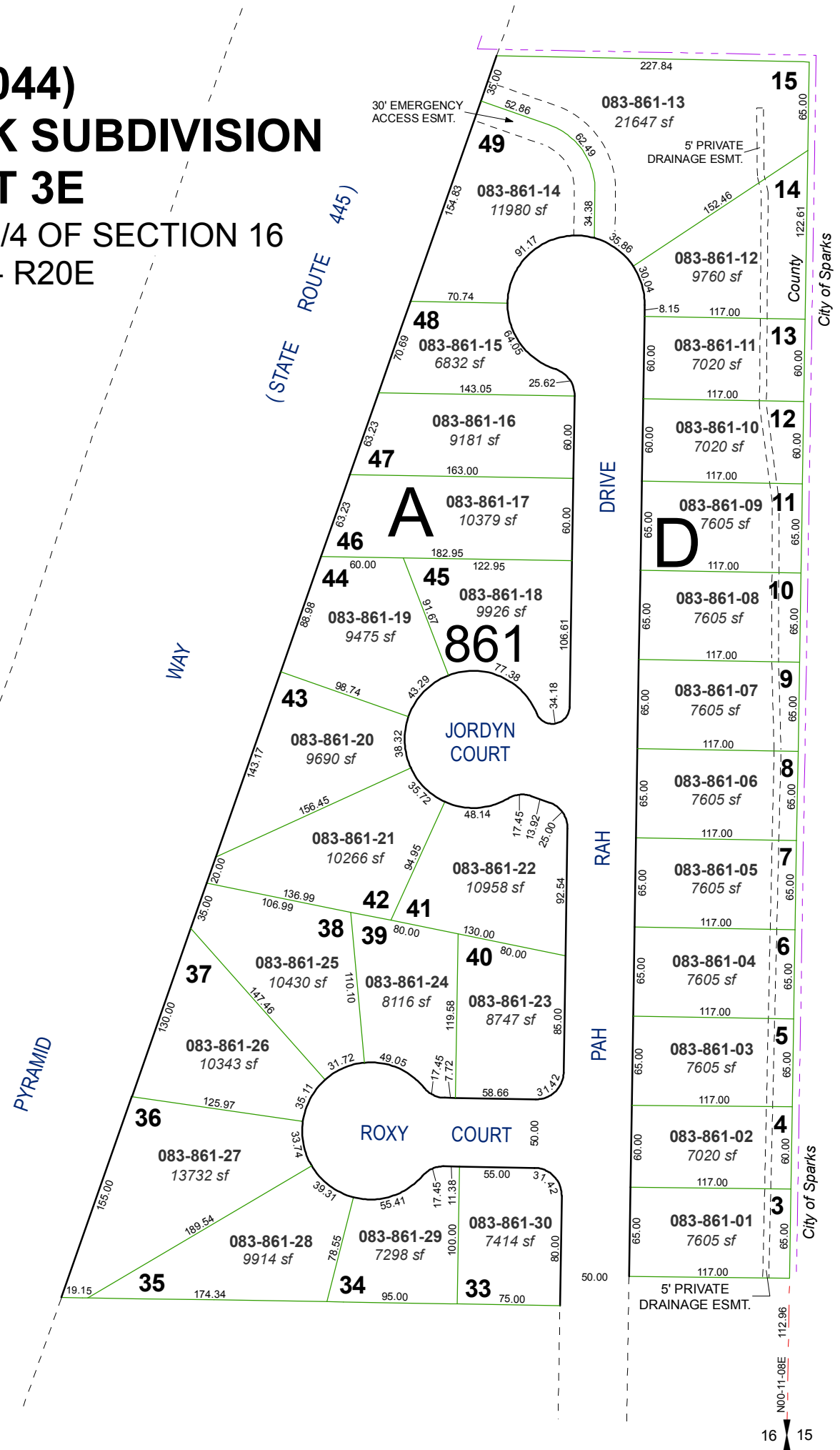


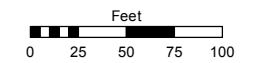
**(#3044)**  
**SPRING CREEK SUBDIVISION**  
**UNIT 3E**  
 PORTION OF NE 1/4 OF SECTION 16  
 T20N - R20E



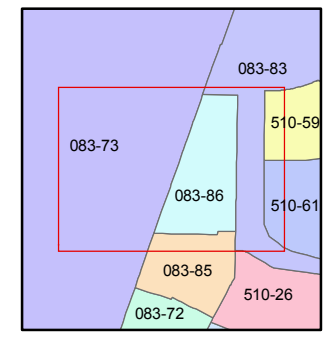
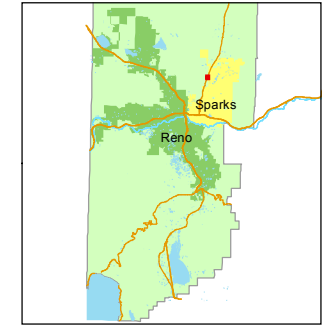
Assessor's Map Number  
**083-86**

STATE OF NEVADA  
**WASHOE COUNTY**  
**ASSESSOR'S OFFICE**  
 Joshua G. Wilson, Assessor

1001 East Ninth Street  
 Building D  
 Reno, Nevada 89512  
 (775) 328-2231



1 inch = 100 feet



created by: TWT 10/31/2011

last updated: \_\_\_\_\_

area previously shown on map(s)  
083-83

NOTE: This map was prepared for the use of the Washoe County Assessor for assessment and illustrative purposes only. It does not represent a survey of the premises. No liability is assumed as to the sufficiency or accuracy of the data delineated hereon.