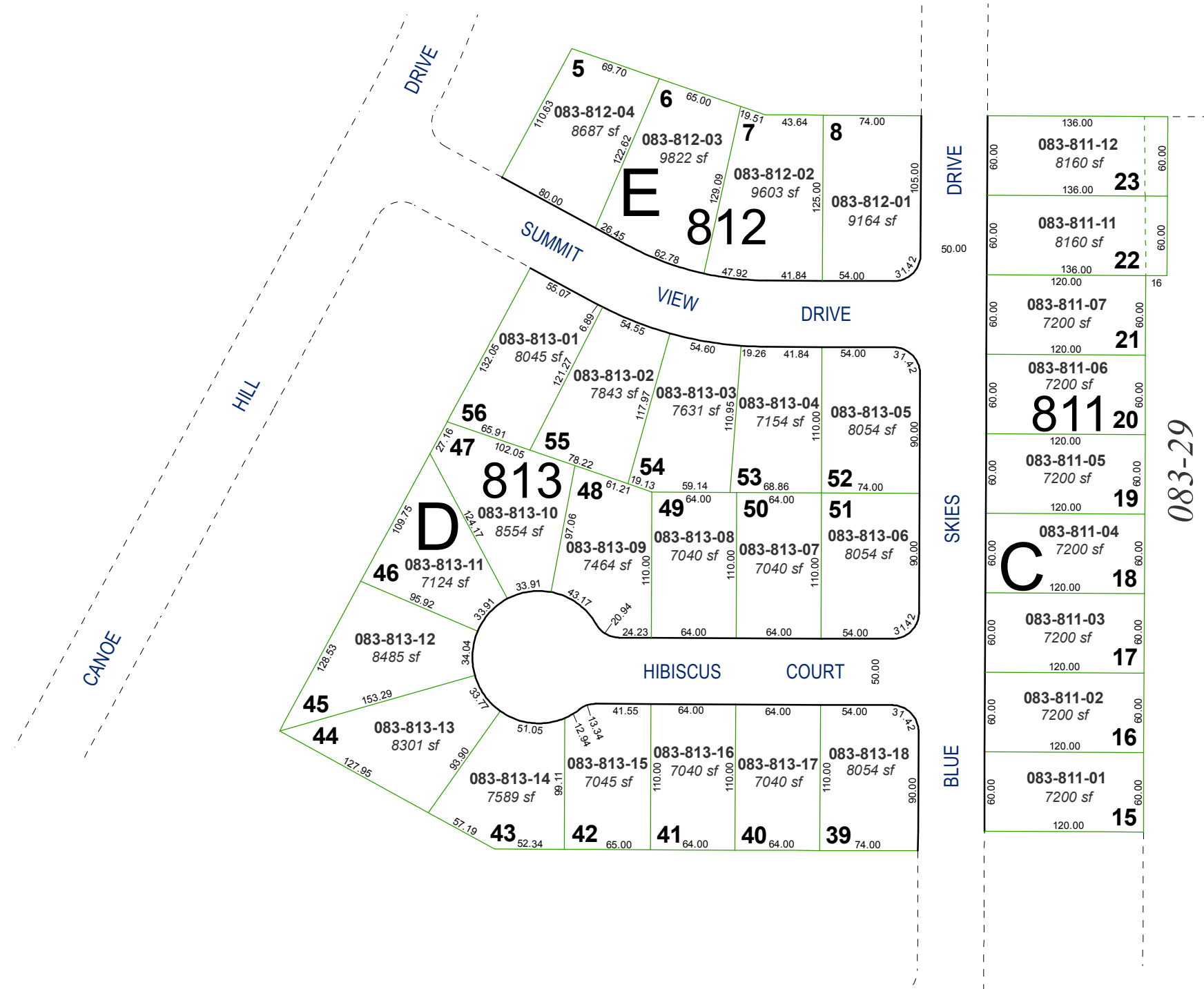


**(#2969)**  
**SPRING CREEK SUBDIVISION**  
**UNIT 2G**

POR. OF NE 1/4 OF SECTION 21  
T20N - R20E

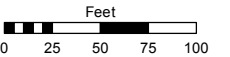


Assessor's Map Number

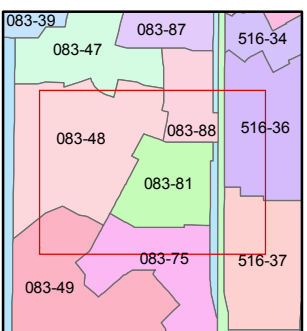
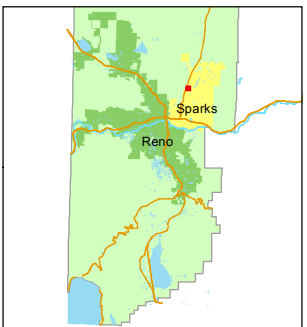
**083-81**

STATE OF NEVADA  
**WASHOE COUNTY**  
**ASSESSOR'S OFFICE**  
Joshua G. Wilson, Assessor

1001 East Ninth Street  
Building D  
Reno, Nevada 89512  
(775) 328-2231



1 inch = 100 feet



created by: TWT 11/15/2011

last updated: \_\_\_\_\_

area previously shown on map(s)

**083-29**

NOTE: This map was prepared for the use of the Washoe County Assessor for assessment and illustrative purposes only. It does not represent a survey of the premises. No liability is assumed as to the sufficiency or accuracy of the data delineated hereon.