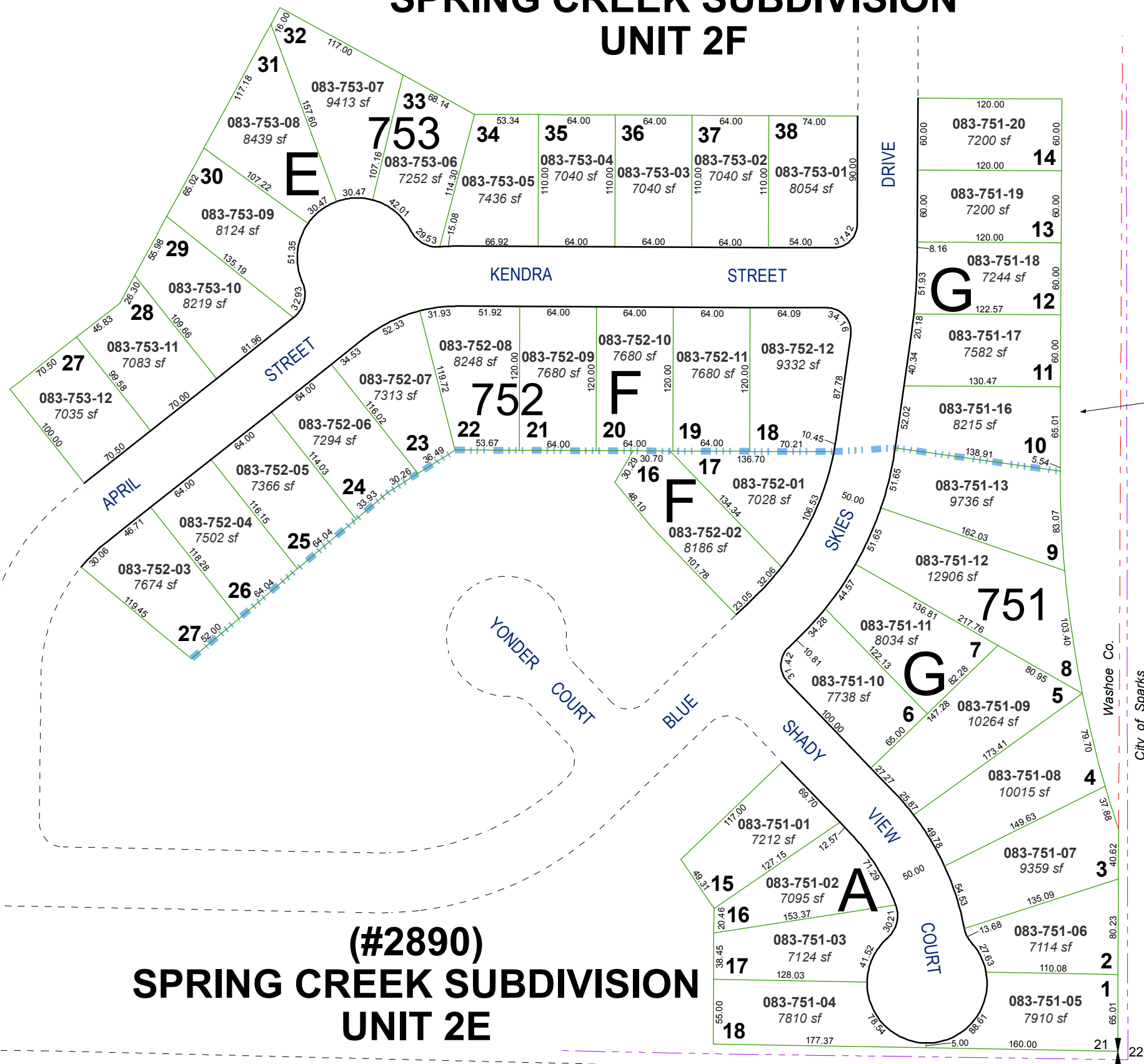


# (#2925) SPRING CREEK SUBDIVISION UNIT 2F



# (#2890) SPRING CREEK SUBDIVISION UNIT 2E

LOS

ALTOS

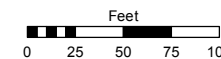
PARKWAY

Assessor's Map Number

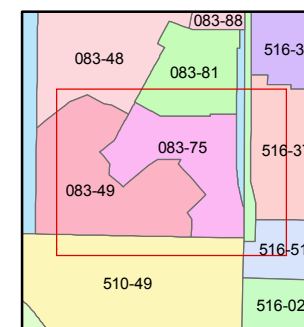
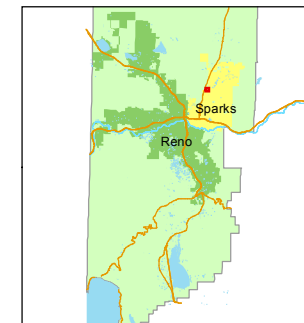
**083-75**

STATE OF NEVADA  
**WASHOE COUNTY**  
ASSESSOR'S OFFICE  
Joshua G. Wilson, Assessor

1001 East Ninth Street  
Building D  
Reno, Nevada 89512  
(775) 328-2231



1 inch = 100 feet



created by: TWT 11/16/2011

last updated:

area previously shown on map(s)

PORTION OF NE 1/4  
OF SECTION 21  
T20N - R20E

← 083-29

NOTE: This map was prepared for the use of the Washoe County Assessor for assessment and illustrative purposes only. It does not represent a survey of the premises. No liability is assumed as to the sufficiency or accuracy of the data delineated hereon.