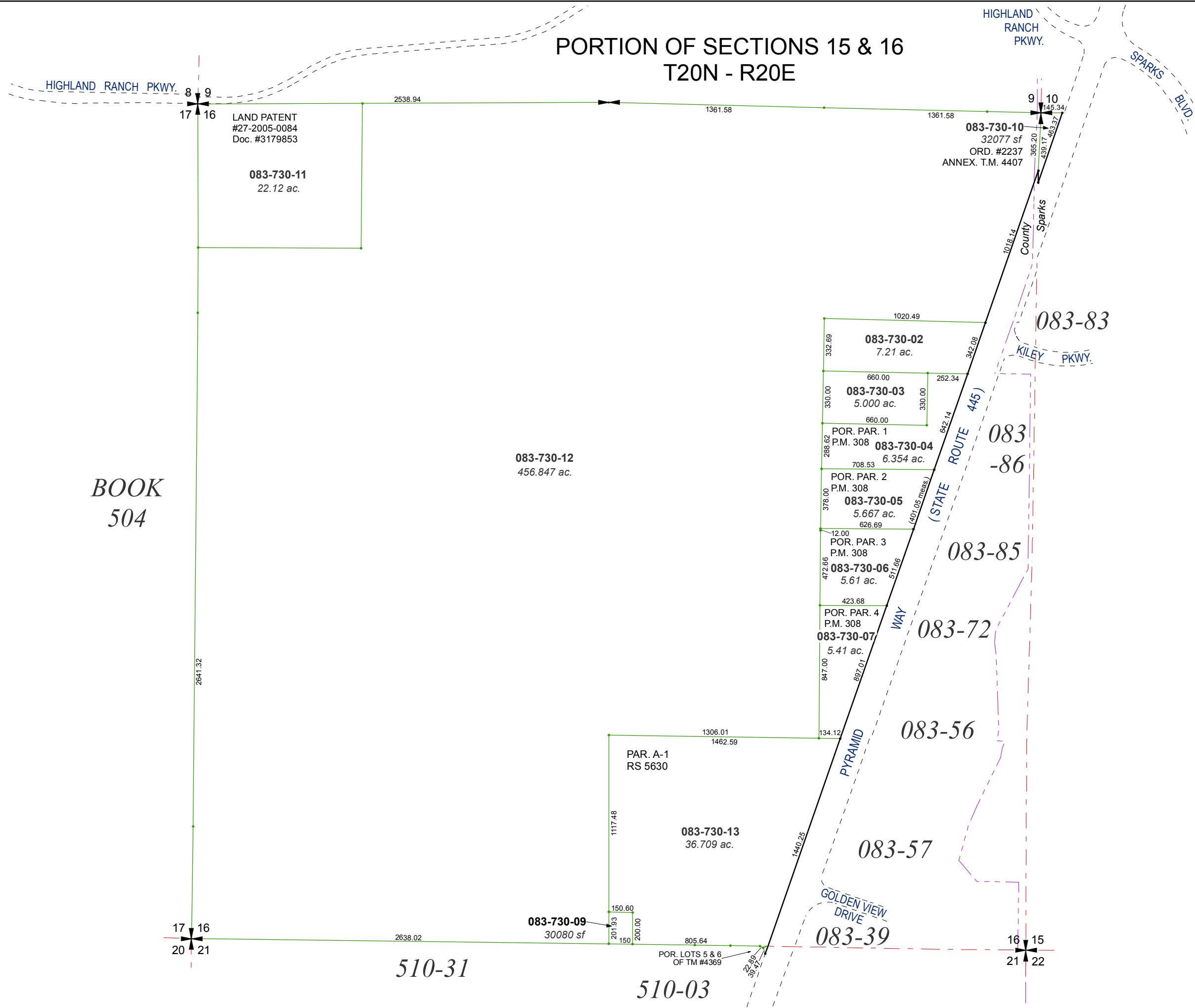


PORTION OF SECTIONS 15 & 16  
T20N - R20E

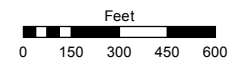


BOOK  
504

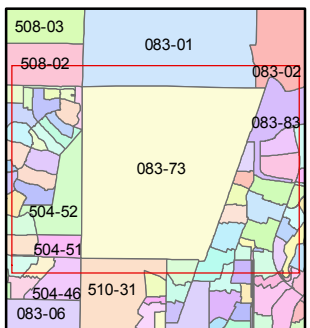
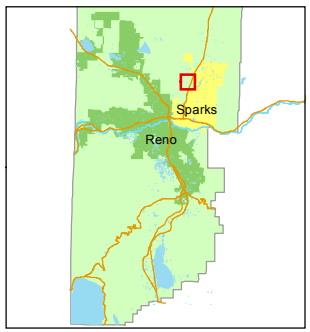
Assessor's Map Number  
**083-73**

STATE OF NEVADA  
**WASHOE COUNTY**  
ASSESSOR'S OFFICE  
Michael E. Clark, Assessor

1001 East Ninth Street  
Building D  
Reno, Nevada 89512  
(775) 328-2231



1 inch = 600 feet



created by: TWT 10/17/2011  
last updated: KSB 5/12/15

area previously shown on map(s)  
083-06, 083-22

NOTE: This map was prepared for the use of the Washoe County Assessor for assessment and illustrative purposes only. It does not represent a survey of the premises. No liability is assumed as to the sufficiency or accuracy of the data delineated hereon.