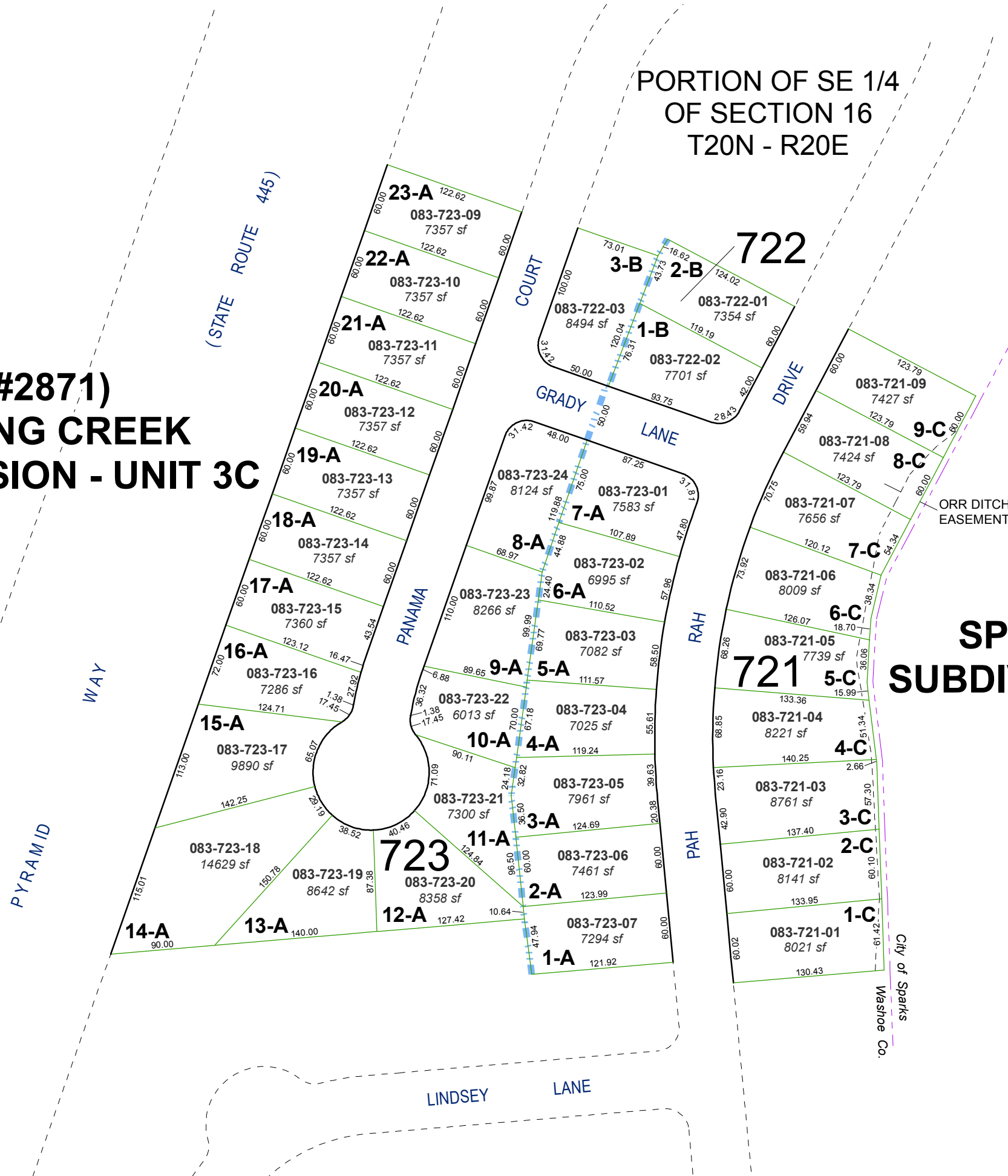


**(#2871)
SPRING CREEK
SUBDIVISION - UNIT 3C**

PORTION OF SE 1/4
OF SECTION 16
T20N - R20E

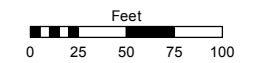
**(#2811)
SPRING CREEK
SUBDIVISION - UNIT 3B**



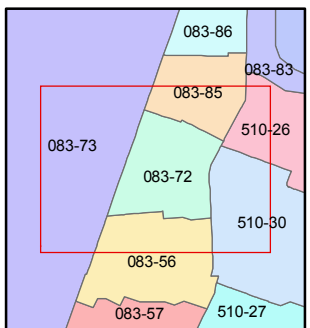
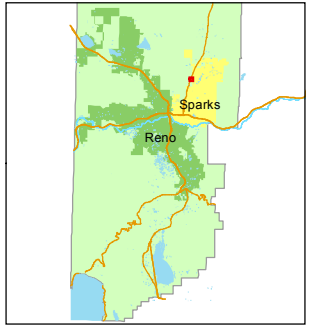
Assessor's Map Number
083-72

STATE OF NEVADA
WASHOE COUNTY
ASSESSOR'S OFFICE
Joshua G. Wilson, Assessor

1001 East Ninth Street
Building D
Reno, Nevada 89512
(775) 328-2231



1 inch = 100 feet



created by: TWT 11/1/2011

last updated: _____

area previously shown on map(s)

NOTE: This map was prepared for the use of the Washoe County Assessor for assessment and illustrative purposes only. It does not represent a survey of the premises. No liability is assumed as to the sufficiency or accuracy of the data delineated hereon.