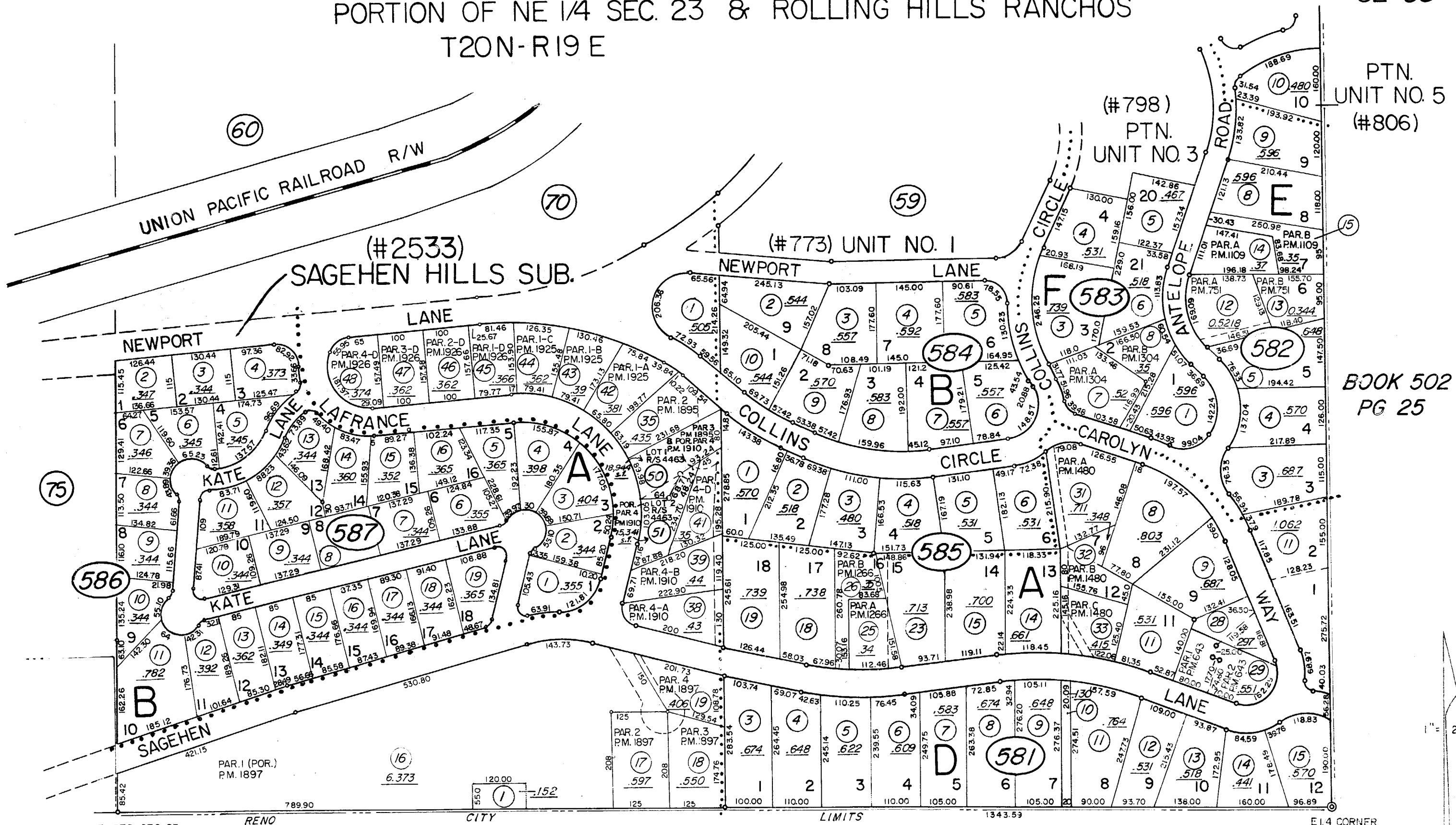


PORTION OF NE 1/4 SEC. 23 & ROLLING HILLS RANCHOS
T20N-R19 E

82-58



PTN. UNIT NO. 5
(#806)

BOOK 502
PG 25

1" = 200'

BOOK 502 PG 25

UNIT NO. 4
(#798)

Assessor's Map County of Washoe, Nevada

NOTE: This Map is prepared for the use of the Washoe County Assessor for Assessment and illustrative purposes only, it does not represent survey of the premises. No liability is assumed as to the sufficiency or accuracy of the data delineated hereon.

NOTE - ASSESSOR'S BLOCK NUMBERS SHOWN IN ELLIPSES
ASSESSOR'S PARCEL NUMBERS SHOWN IN CIRCLES

drawn by MARY CRAIG 6/74
checked _____
revised TWT 10/19/04
superseded _____