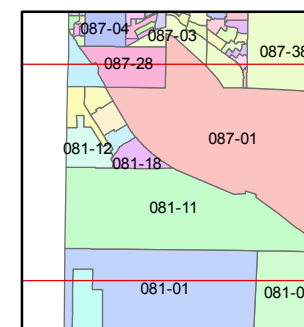
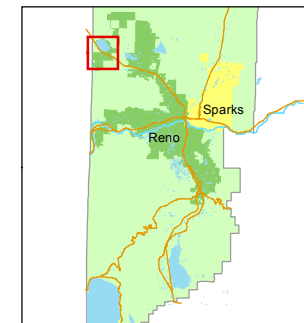


1 inch = 1,320 feet



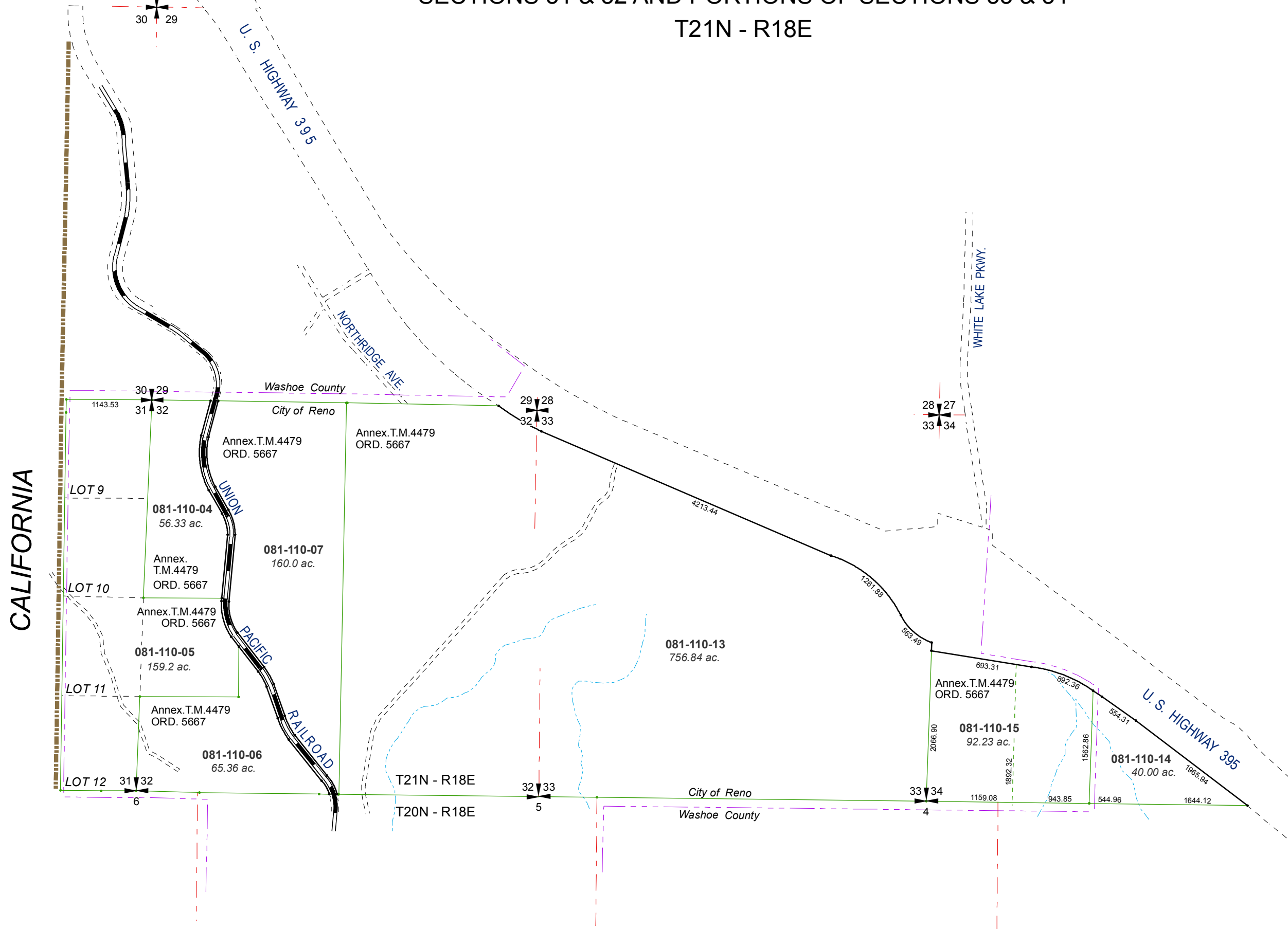
created by: KSB 10/14/2011

last updated: CFB 05/11/2015

area previously shown on map(s)

NOTE: This map was prepared for the use of the Washoe County Assessor for assessment and illustrative purposes only. It does not represent a survey of the premises. No liability is assumed as to the sufficiency or accuracy of the data delineated hereon.

# SECTIONS 31 & 32 AND PORTIONS OF SECTIONS 33 & 34 T21N - R18E



CALIFORNIA