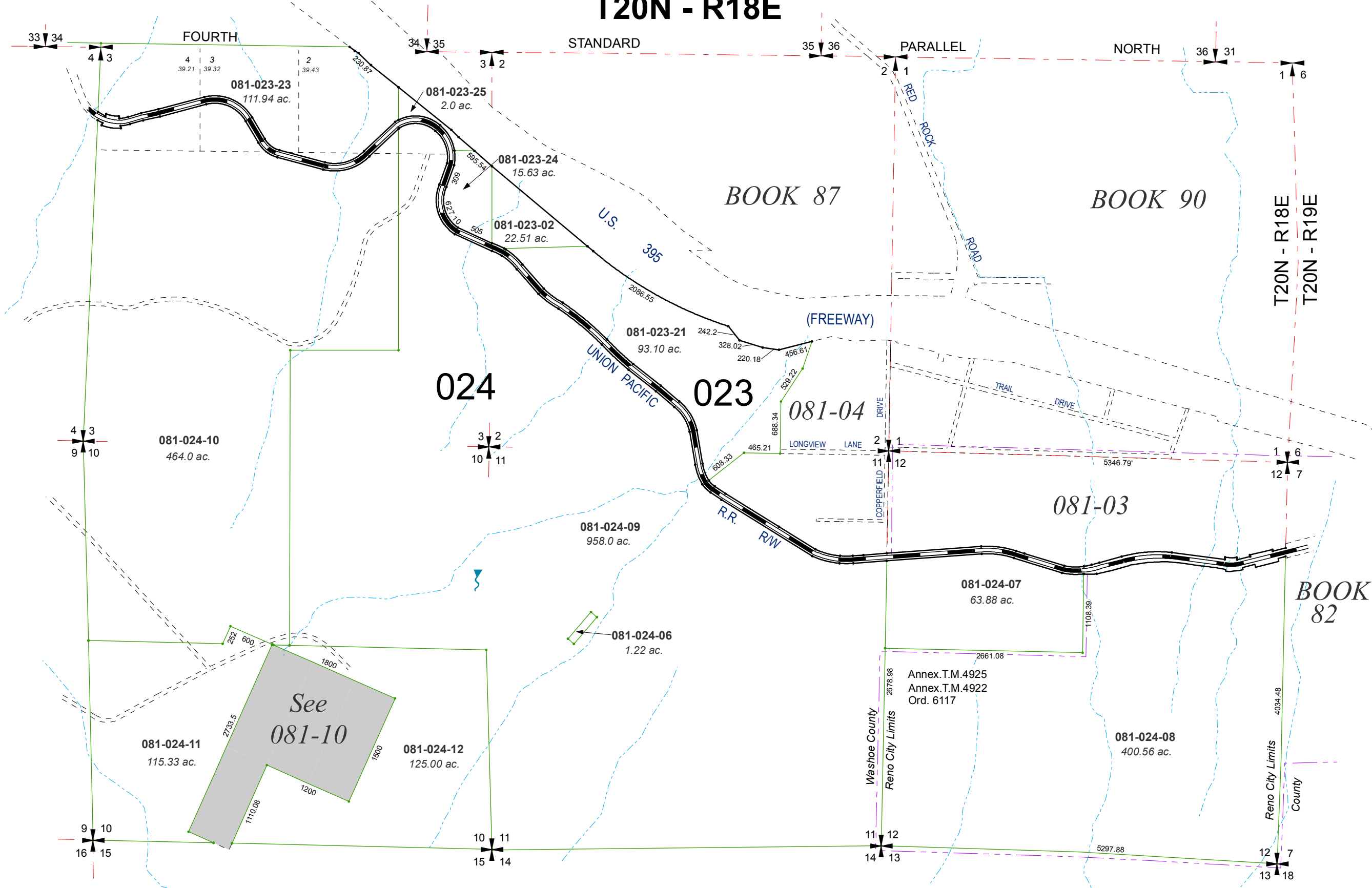


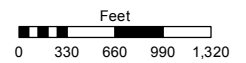
PORTIONS OF SECTIONS 2, 3, 10, 11 & 12 T20N - R18E



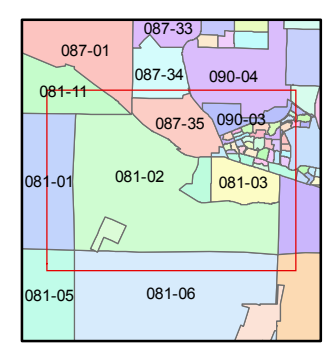
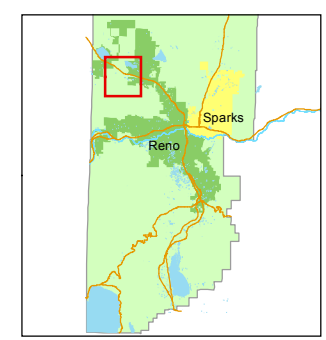
Assessor's Map Number
081-02

STATE OF NEVADA
WASHOE COUNTY
ASSESSOR'S OFFICE
Michael E. Clark, Assessor

1001 East Ninth Street
Building D
Reno, Nevada 89512
(775) 328-2231



1 inch = 1,320 feet



created by: CFB 09/21/2009
last updated: CFB 05/08/2015

area previously shown on map(s)

NOTE: This map was prepared for the use of the Washoe County Assessor for assessment and illustrative purposes only. It does not represent a survey of the premises. No liability is assumed as to the sufficiency or accuracy of the data delineated hereon.