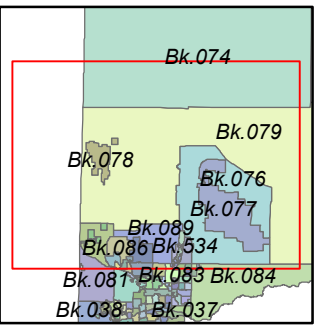
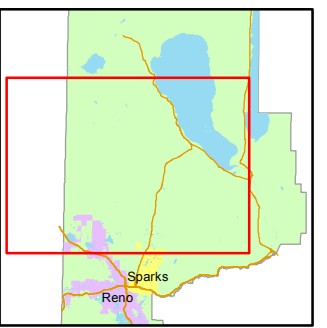
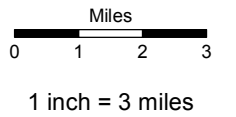


STATE OF NEVADA  
**WASHOE COUNTY**  
**ASSESSOR'S OFFICE**  
 Joshua G. Wilson, Assessor

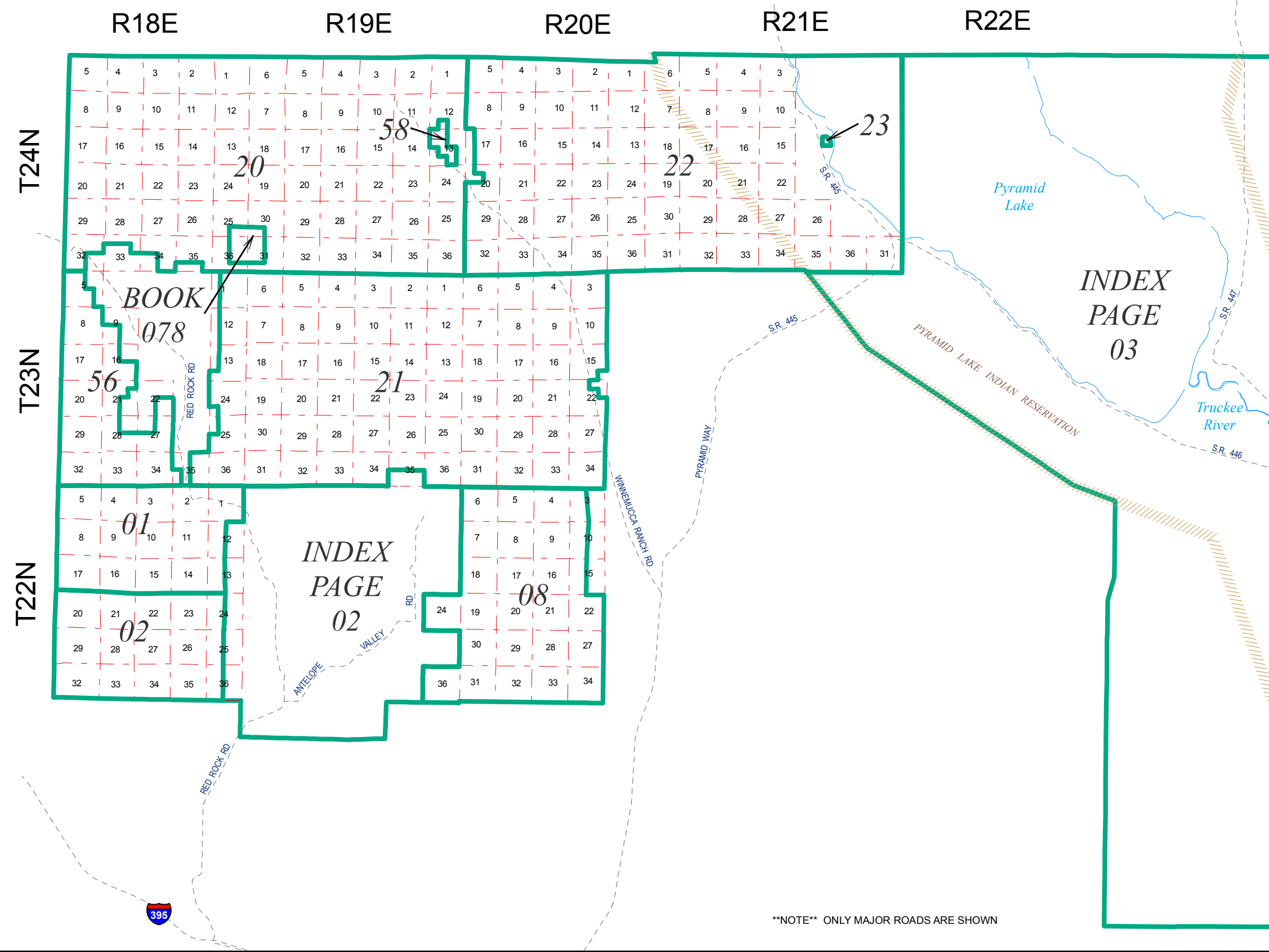
1001 East Ninth Street  
 Building D  
 Reno, Nevada 89512  
 (775) 328-2231



created by: NLH 11/15/2011  
 last updated: \_\_\_\_\_

NOTE: This map was prepared for the use of the Washoe County Assessor for assessment and illustrative purposes only. It does not represent a survey of the premises. No liability is assumed as to the sufficiency or accuracy of the data delineated hereon.

CALIFORNIA



\*\*NOTE\*\* ONLY MAJOR ROADS ARE SHOWN