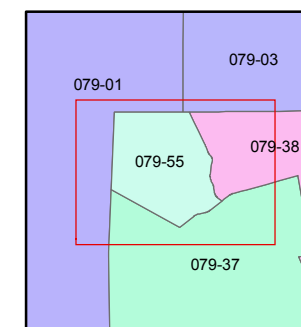
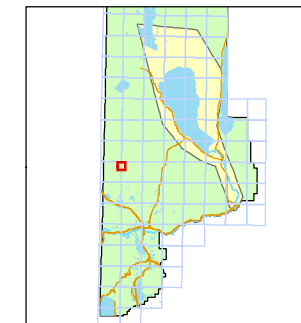


STATE OF NEVADA  
**WASHOE COUNTY**  
**ASSESSOR'S OFFICE**  
Joshua G. Wilson, Assessor

1001 East Ninth Street  
Building D  
Reno, Nevada 89512  
(775) 328-2231



1 inch = 500 feet



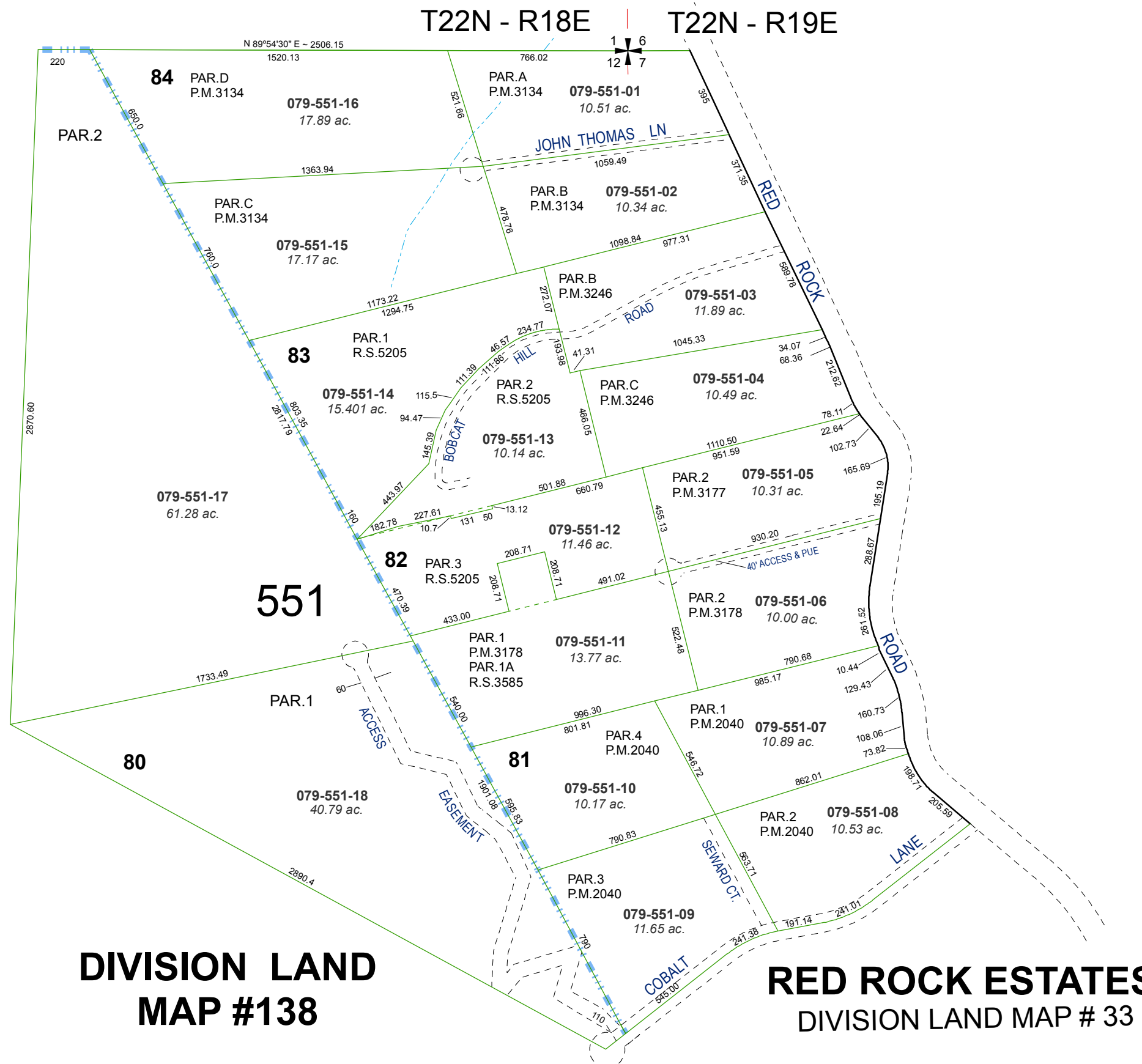
created by: CFB 03/17/2010

last updated: CFB 02/09/2012

area previously shown on map(s)

079-38

NOTE: This map was prepared for the use of the Washoe County Assessor for assessment and illustrative purposes only. It does not represent a survey of the premises. No liability is assumed as to the sufficiency or accuracy of the data delineated hereon.



**DIVISION LAND  
MAP #138**

**RED ROCK ESTATES  
DIVISION LAND MAP # 33**

POR. OF THE E 1/2 OF SECTION 12, T22N - R18E  
POR. OF THE W 1/2 OF SECTION 7, T22N - R19E