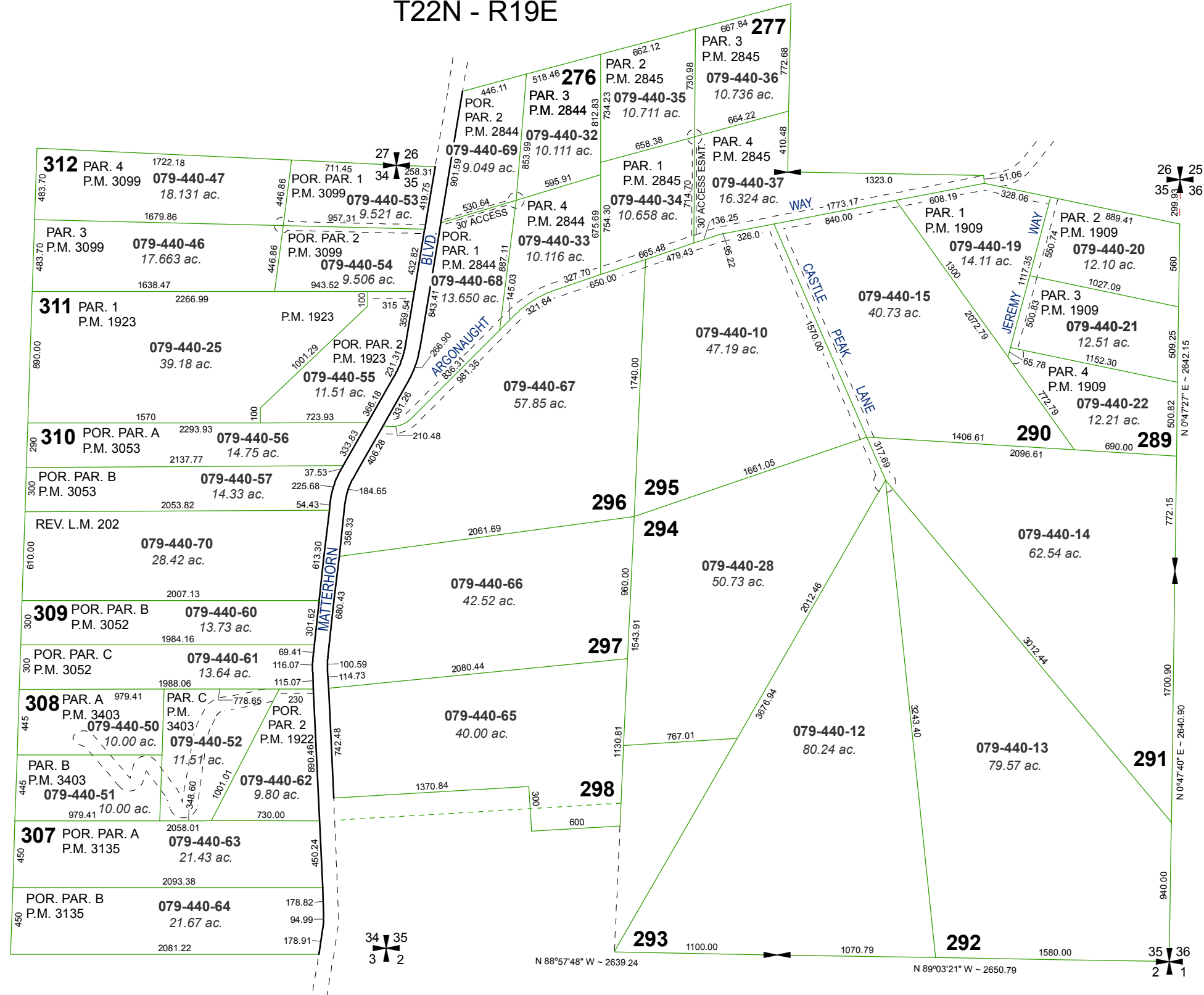


RED ROCK ESTATES

MAP OF DIVISION INTO LARGE PARCELS #33

PORTIONS OF SECTIONS 26, 34 & 35

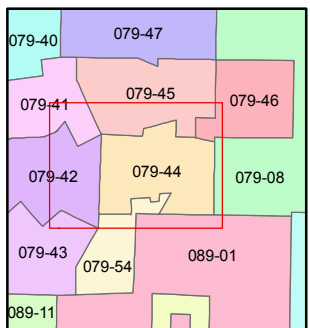
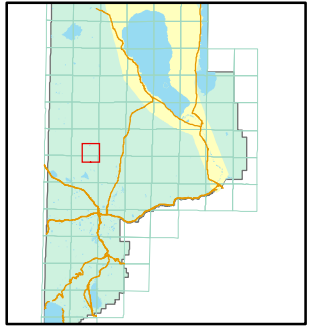
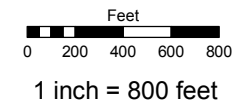
T22N - R19E



Assessor's Map Number
079-44

STATE OF NEVADA
WASHOE COUNTY
ASSESSOR'S OFFICE
Joshua G. Wilson, Assessor

1001 East Ninth Street
Building D
Reno, Nevada 89512
(775) 328-2231



created by: TWT 3/15/2011
last updated: _____
area previously shown on map(s) _____

NOTE: This map was prepared for the use of the Washoe County Assessor for assessment and illustrative purposes only. It does not represent a survey of the premises. No liability is assumed as to the sufficiency or accuracy of the data delineated hereon.