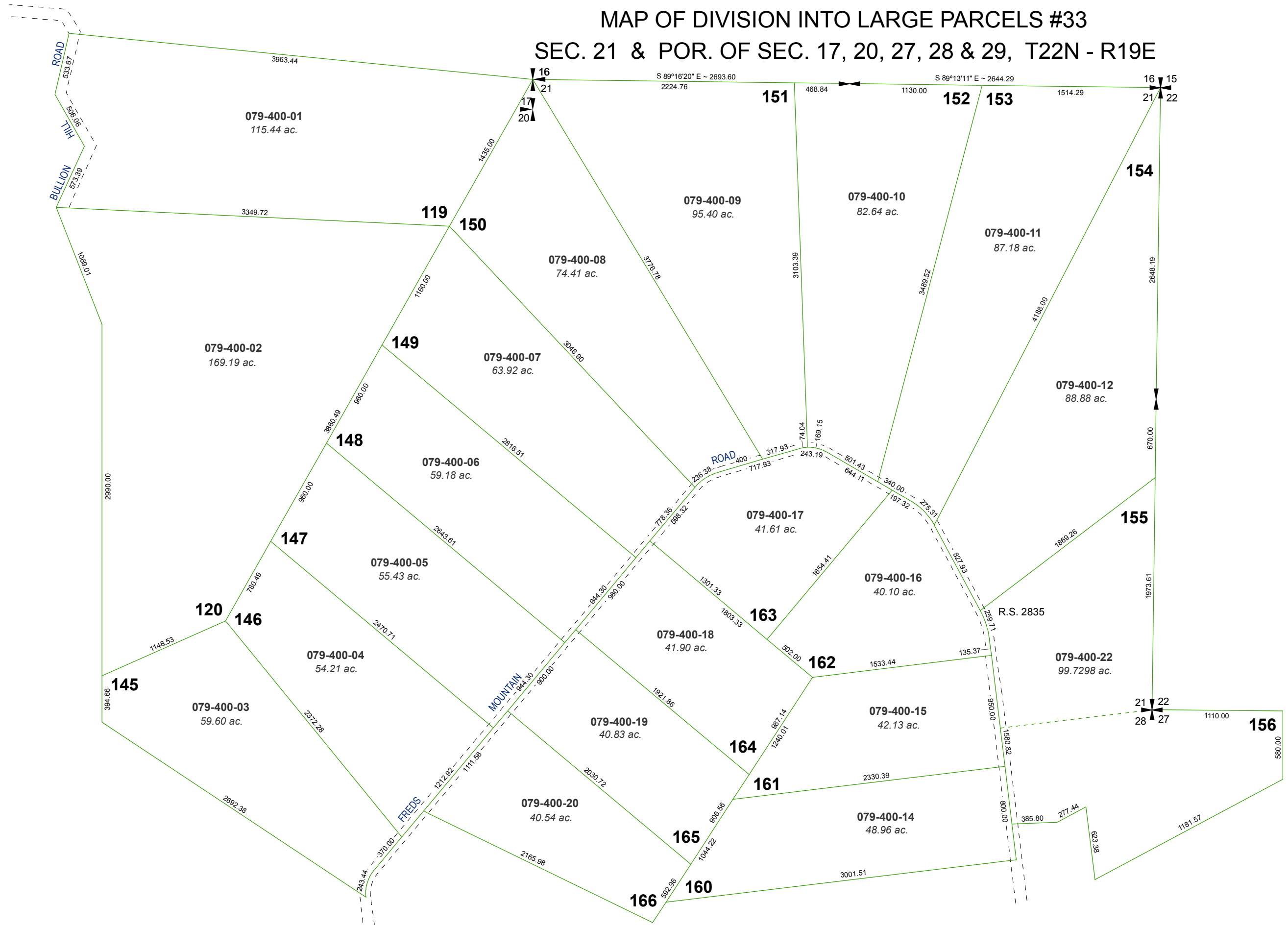


# RED ROCK ESTATES

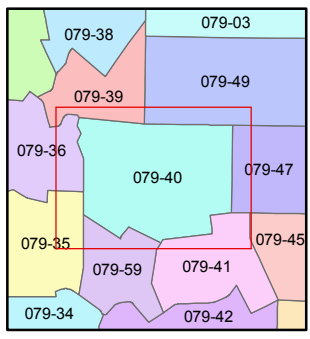
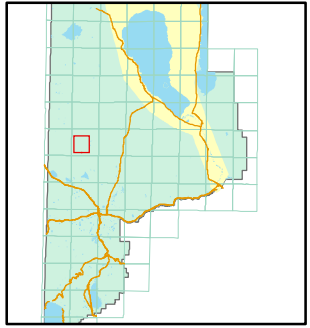
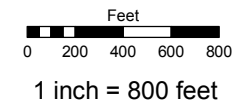
## MAP OF DIVISION INTO LARGE PARCELS #33 SEC. 21 & POR. OF SEC. 17, 20, 27, 28 & 29, T22N - R19E



Assessor's Map Number  
**079-40**

STATE OF NEVADA  
**WASHOE COUNTY**  
ASSESSOR'S OFFICE  
Joshua G. Wilson, Assessor

1001 East Ninth Street  
Building D  
Reno, Nevada 89512  
(775) 328-2231



created by: TWT 3/21/2011  
last updated: \_\_\_\_\_  
area previously shown on map(s) \_\_\_\_\_

NOTE: This map was prepared for the use of the Washoe County Assessor for assessment and illustrative purposes only. It does not represent a survey of the premises. No liability is assumed as to the sufficiency or accuracy of the data delineated hereon.