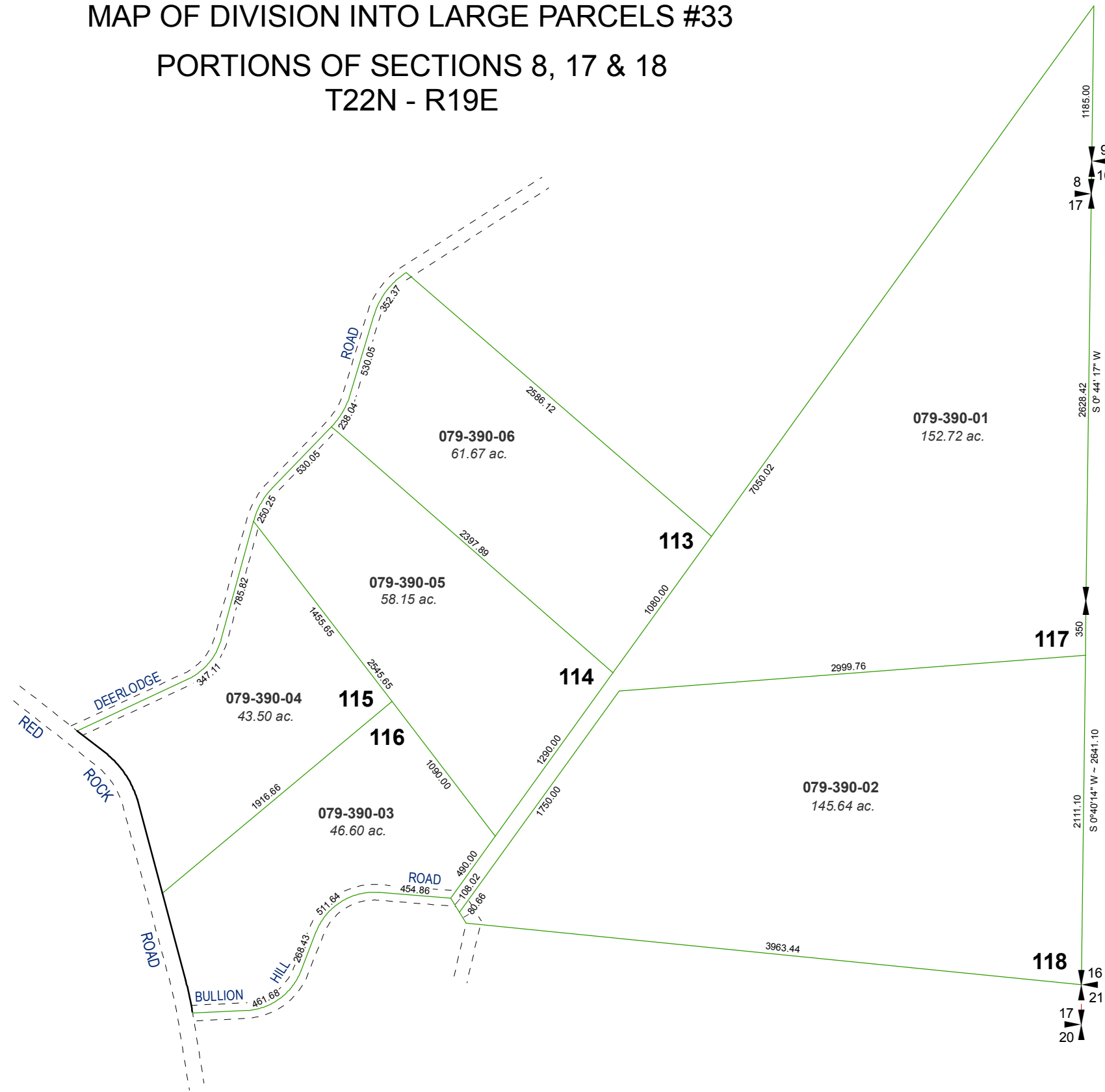


RED ROCK ESTATES

MAP OF DIVISION INTO LARGE PARCELS #33

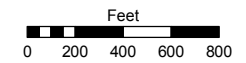
PORTIONS OF SECTIONS 8, 17 & 18 T22N - R19E



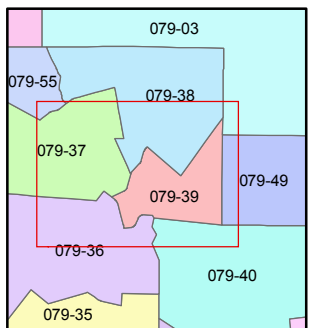
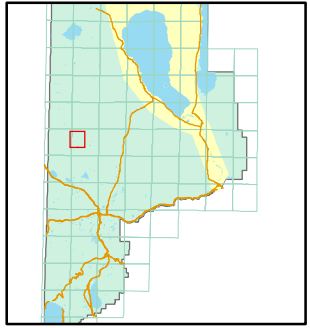
Assessor's Map Number
079-39

STATE OF NEVADA
WASHOE COUNTY
ASSESSOR'S OFFICE

Joshua G. Wilson, Assessor
1001 East Ninth Street
Building D
Reno, Nevada 89512
(775) 328-2231



1 inch = 800 feet



created by: TWT 3/11/2011

last updated: _____

area previously shown on map(s)

NOTE: This map was prepared for the use of the Washoe County Assessor for assessment and illustrative purposes only. It does not represent a survey of the premises. No liability is assumed as to the sufficiency or accuracy of the data delineated hereon.