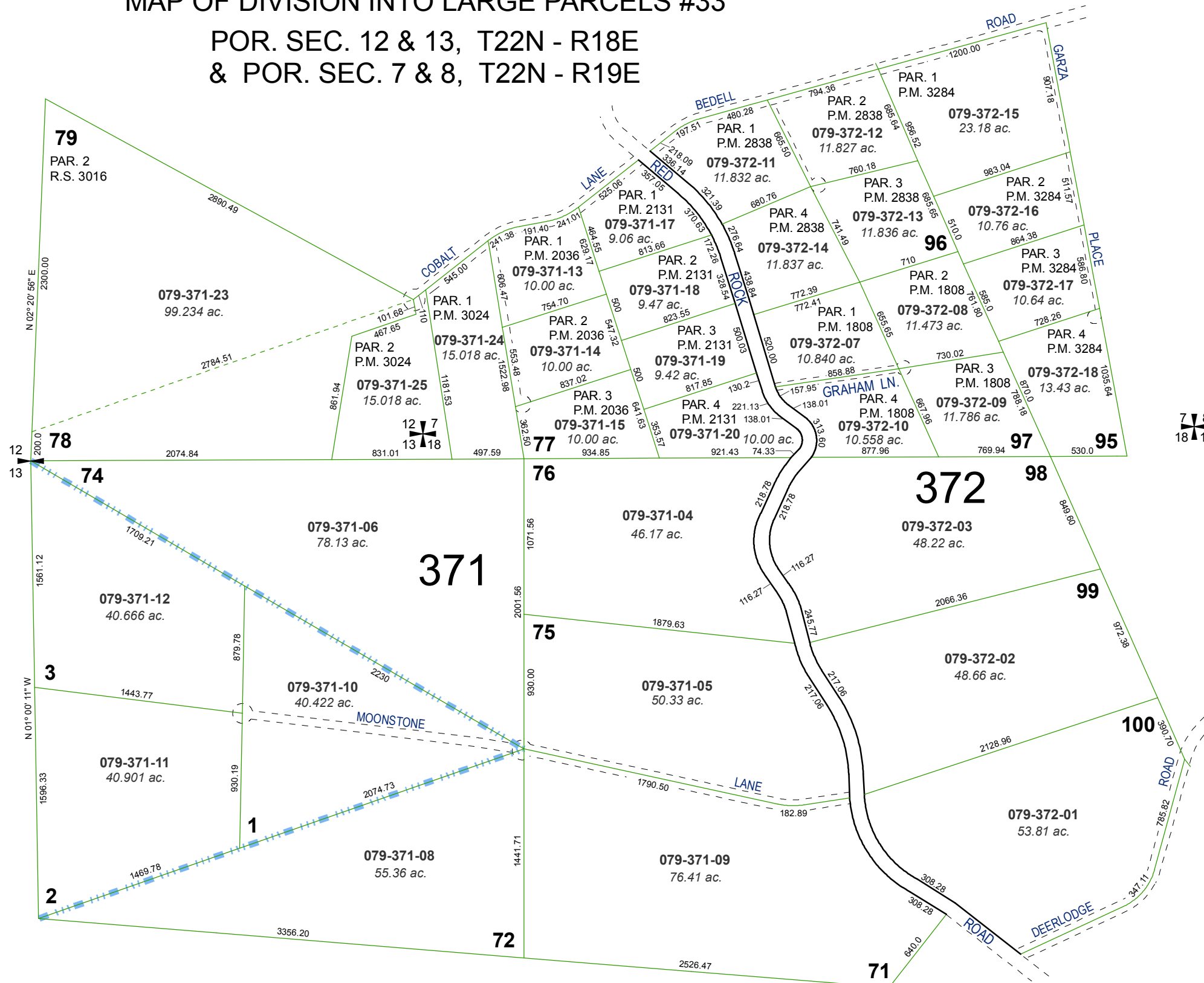


# RED ROCK ESTATES

## MAP OF DIVISION INTO LARGE PARCELS #33

POR. SEC. 12 & 13, T22N - R18E  
& POR. SEC. 7 & 8, T22N - R19E

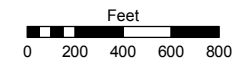


## MAP OF DIVISION INTO LARGE PARCELS #70

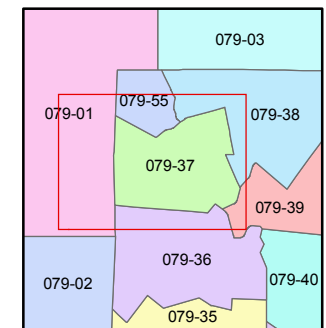
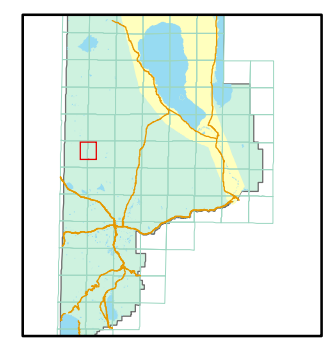
Assessor's Map Number  
**079-37**

STATE OF NEVADA  
**WASHOE COUNTY**  
ASSESSOR'S OFFICE  
Joshua G. Wilson, Assessor

1001 East Ninth Street  
Building D  
Reno, Nevada 89512  
(775) 328-2231



1 inch = 800 feet



created by: TWT 3/10/2011

last updated: \_\_\_\_\_

area previously shown on map(s)  
\_\_\_\_\_

NOTE: This map was prepared for the use of the Washoe County Assessor for assessment and illustrative purposes only. It does not represent a survey of the premises. No liability is assumed as to the sufficiency or accuracy of the data delineated hereon.