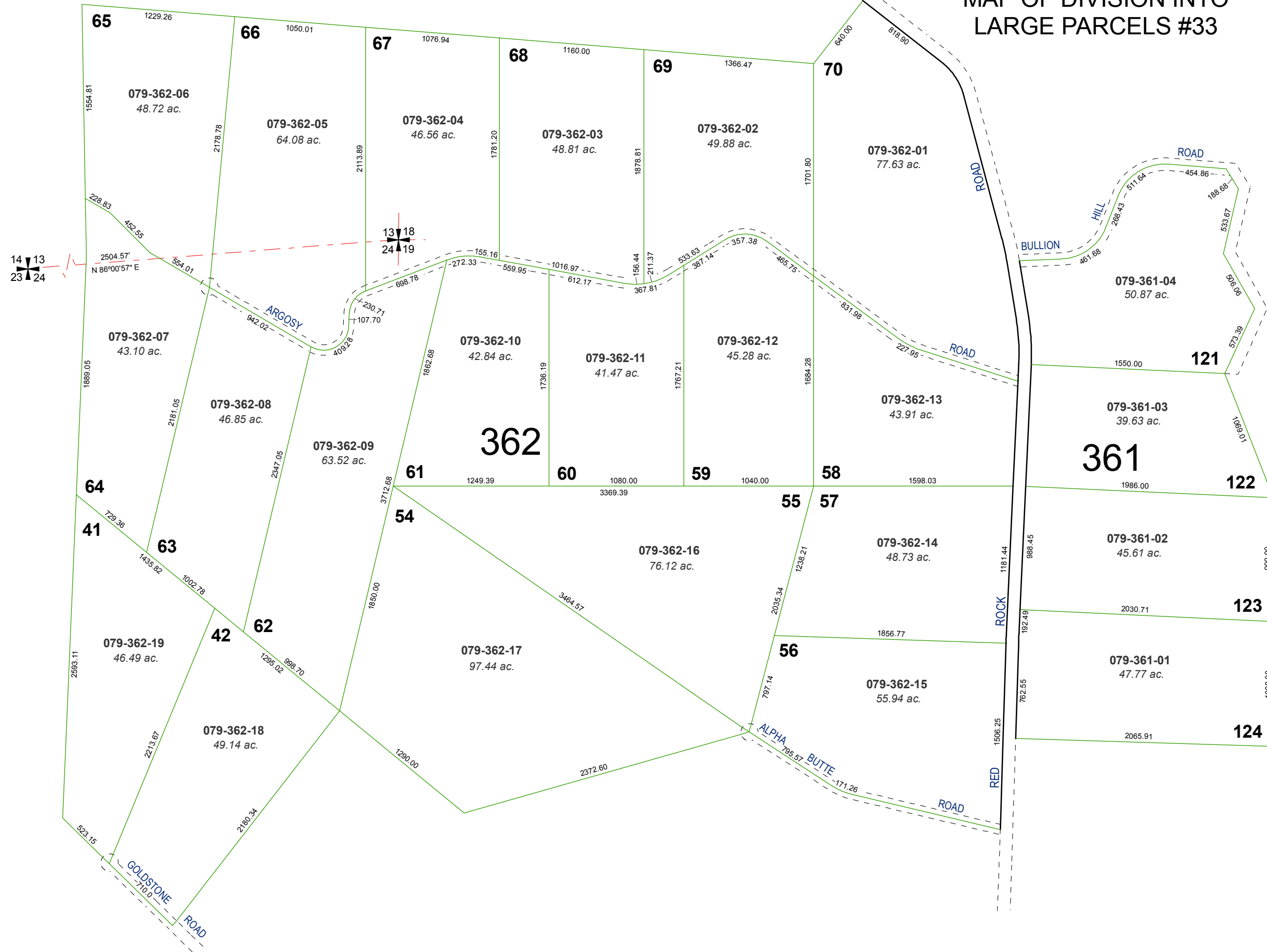


POR. OF SEC. 13 & 24, T22N - R18E &
 POR. OF SEC. 17, 18, 19 & 20, T22N - R19E

RED ROCK ESTATES
 MAP OF DIVISION INTO
 LARGE PARCELS #33



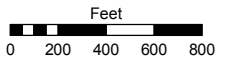
Assessor's Map Number

079-36

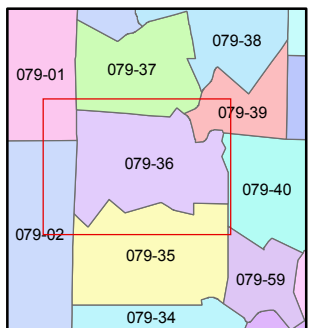
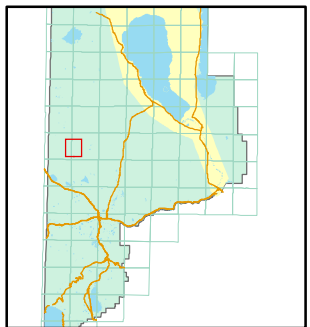
STATE OF NEVADA
WASHOE COUNTY
 ASSESSOR'S OFFICE

Joshua G. Wilson, Assessor

1001 East Ninth Street
 Building D
 Reno, Nevada 89512
 (775) 328-2231



1 inch = 800 feet



created by: TWT 3/11/2011

last updated: _____

area previously shown on map(s)

NOTE: This map was prepared for the use of the Washoe County Assessor for assessment and illustrative purposes only. It does not represent a survey of the premises. No liability is assumed as to the sufficiency or accuracy of the data delineated hereon.