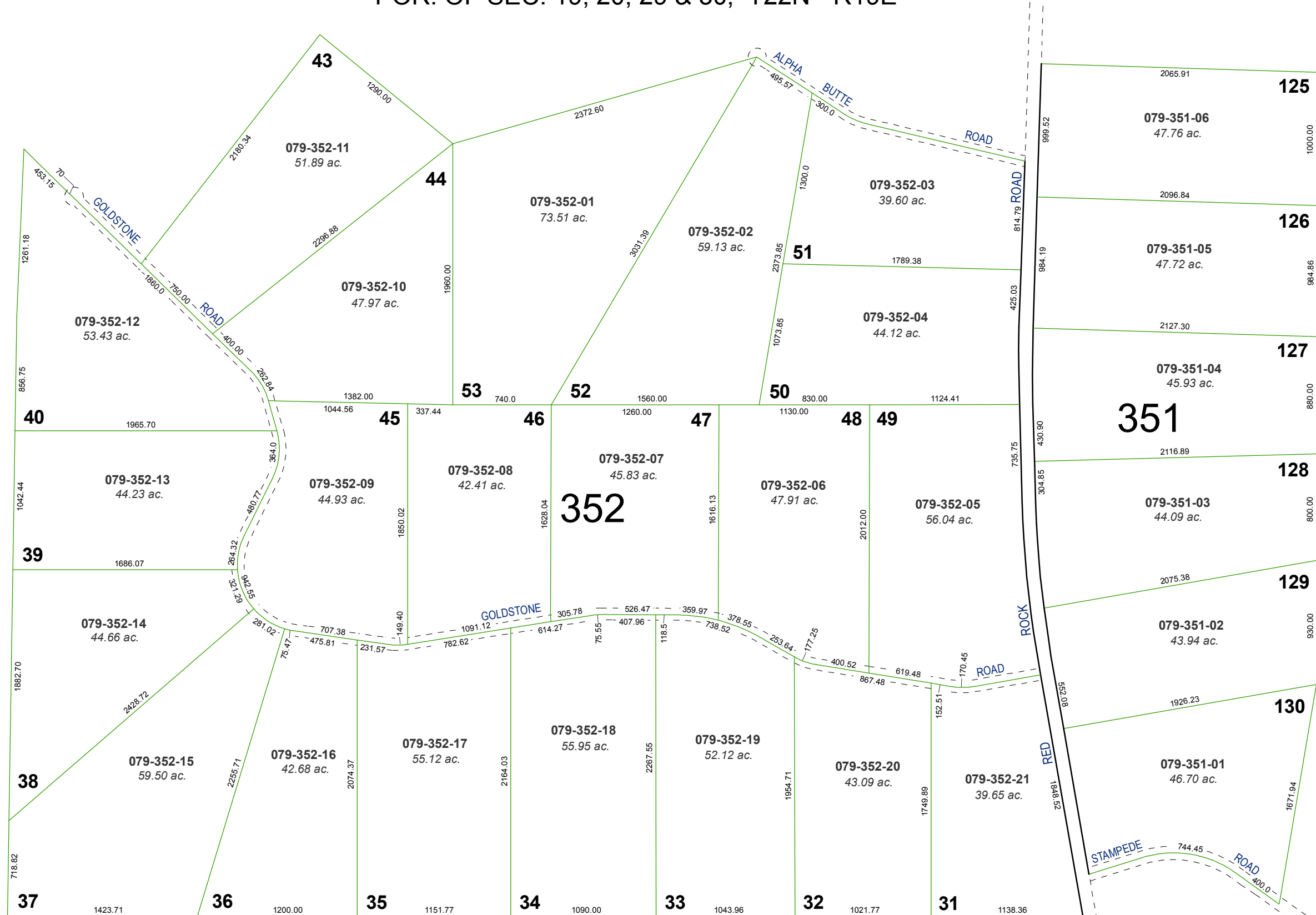


# RED ROCK ESTATES

## MAP OF DIVISION INTO LARGE PARCELS #33

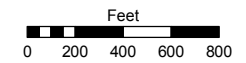
### POR. OF SEC. 24 & 25, T22N - R18E & POR. OF SEC. 19, 20, 29 & 30, T22N - R19E



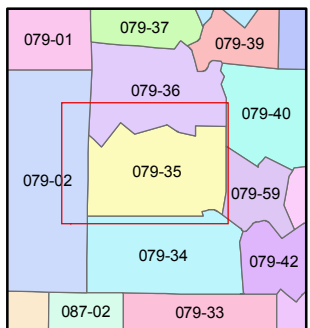
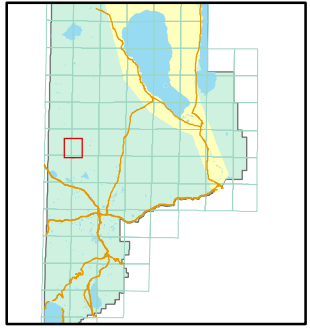
Assessor's Map Number  
**079-35**

STATE OF NEVADA  
**WASHOE COUNTY**  
ASSESSOR'S OFFICE  
Joshua G. Wilson, Assessor

1001 East Ninth Street  
Building D  
Reno, Nevada 89512  
(775) 328-2231



1 inch = 800 feet



created by: TWT 3/11/2011  
last updated: \_\_\_\_\_  
area previously shown on map(s) \_\_\_\_\_

NOTE: This map was prepared for the use of the Washoe County Assessor for assessment and illustrative purposes only. It does not represent a survey of the premises. No liability is assumed as to the sufficiency or accuracy of the data delineated hereon.