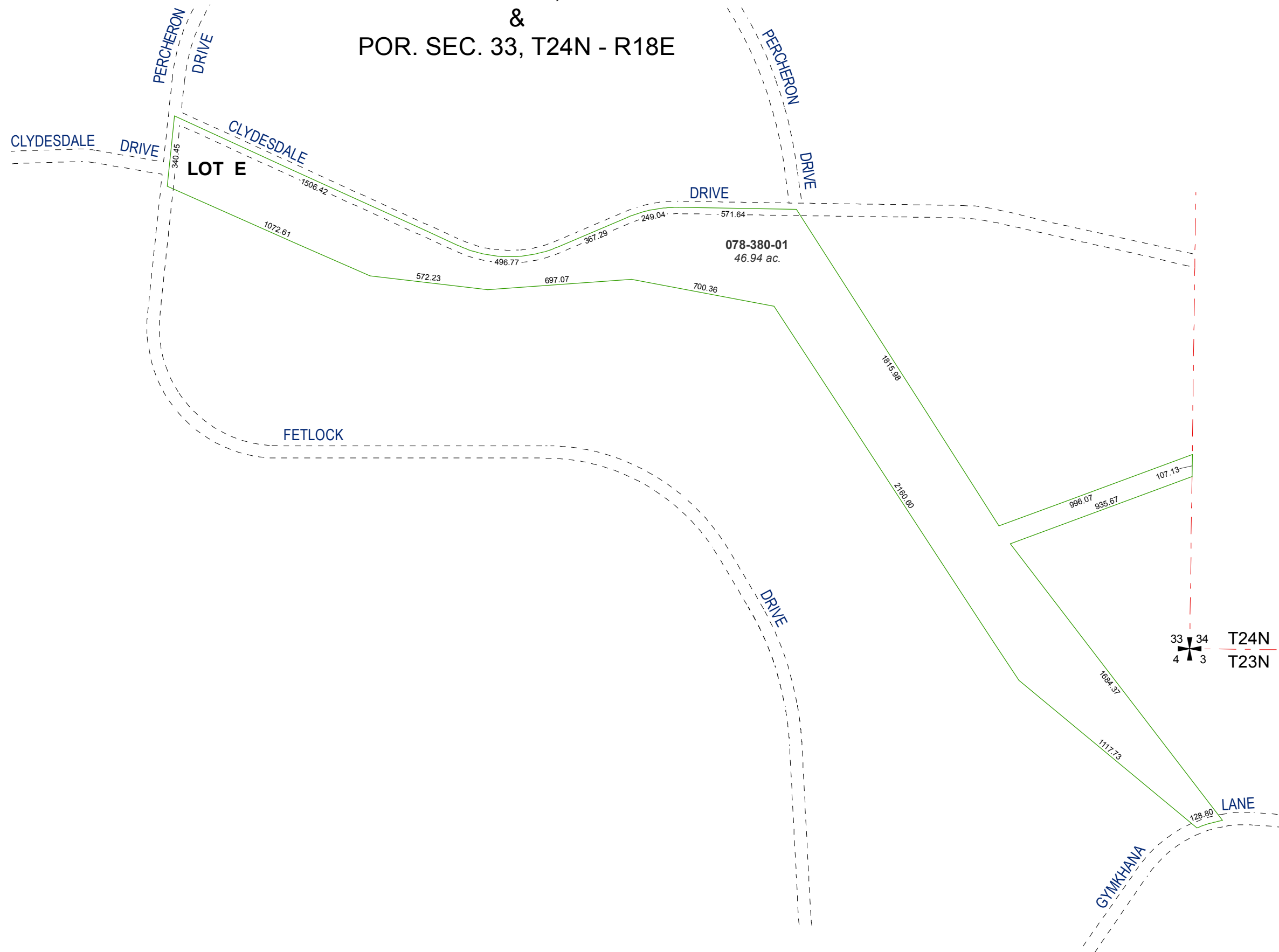


**RECORD OF SURVEY # 687**  
 POR'S. SEC'S. 3 & 4, T23N - R18E  
 &  
 POR. SEC. 33, T24N - R18E



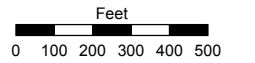
Assessor's Map Number

**078-38**

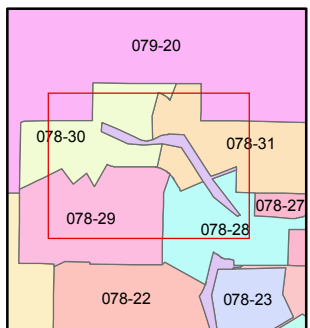
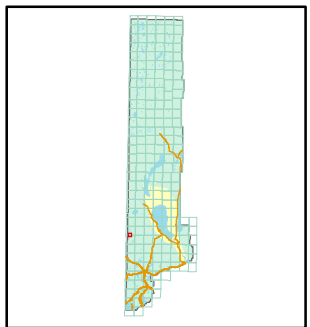
STATE OF NEVADA  
**WASHOE COUNTY**  
**ASSESSOR'S OFFICE**

Joshua G. Wilson, Assessor

1001 East Ninth Street  
 Building D  
 Reno, Nevada 89512  
 (775) 328-2231



1 inch = 500 feet



created by: TWT 4/1/2011

last updated: \_\_\_\_\_

area previously shown on map(s)

**078-30**

NOTE: This map was prepared for the use of the Washoe County Assessor for assessment and illustrative purposes only. It does not represent a survey of the premises. No liability is assumed as to the sufficiency or accuracy of the data delineated hereon.