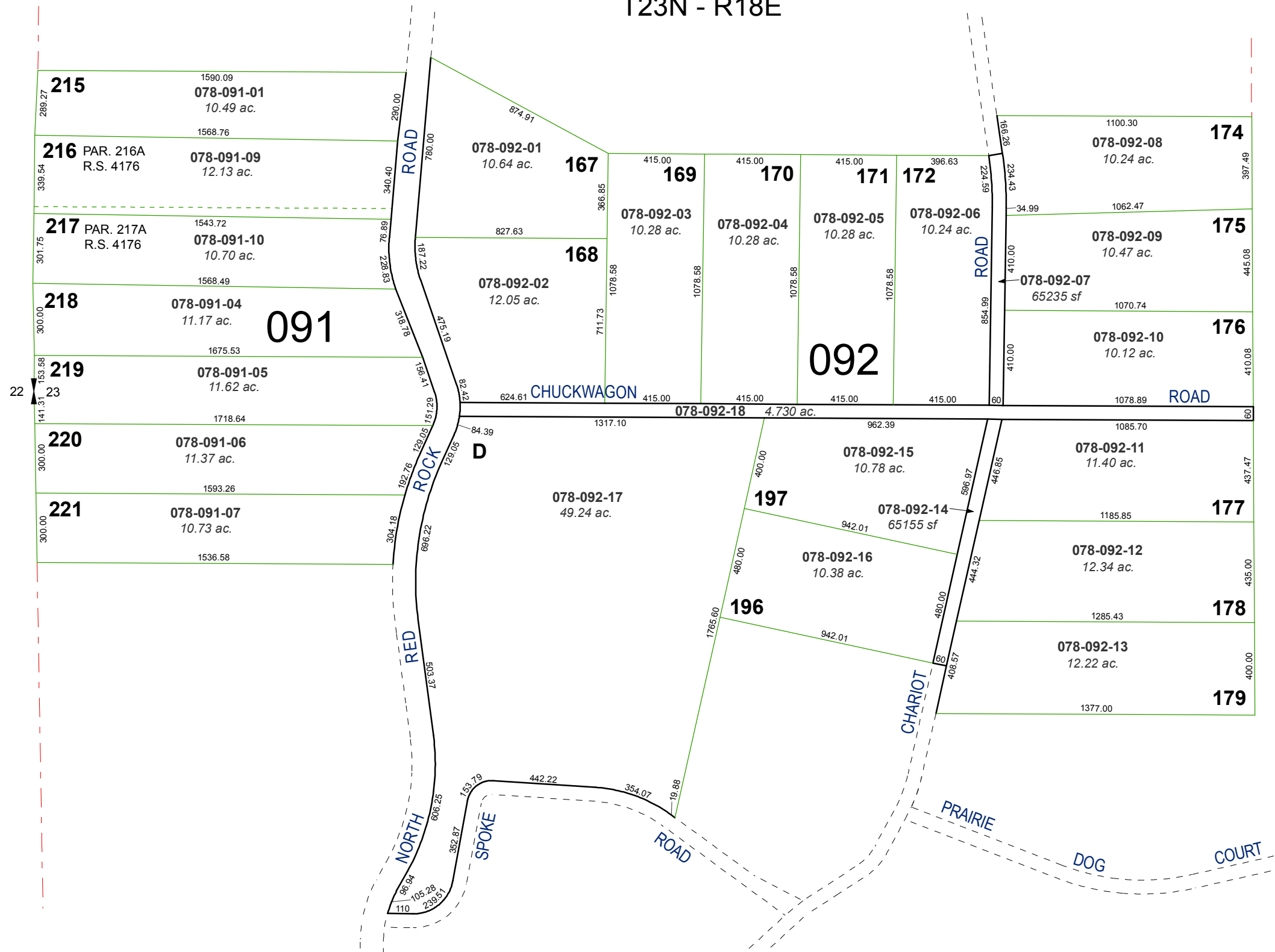


# RECORD OF SURVEY # 684 AMENDED RECORD OF SURVEY # 831

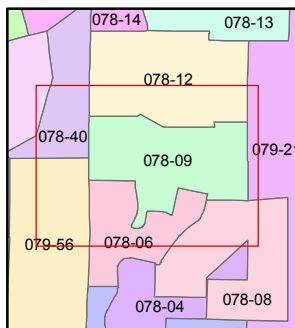
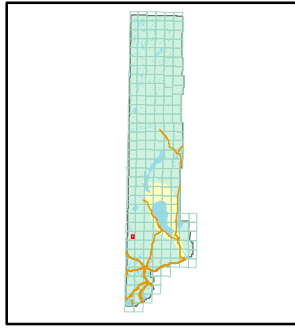
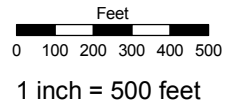
PORTION OF SECTION 23  
T23N - R18E



Assessor's Map Number  
**078-09**

STATE OF NEVADA  
**WASHOE COUNTY**  
ASSESSOR'S OFFICE  
Joshua G. Wilson, Assessor

1001 East Ninth Street  
Building D  
Reno, Nevada 89512  
(775) 328-2231



created by: TWT 4/8/2011  
 last updated: \_\_\_\_\_  
 area previously shown on map(s)  
 \_\_\_\_\_

NOTE: This map was prepared for the use of the Washoe County Assessor for assessment and illustrative purposes only. It does not represent a survey of the premises. No liability is assumed as to the sufficiency or accuracy of the data delineated hereon.