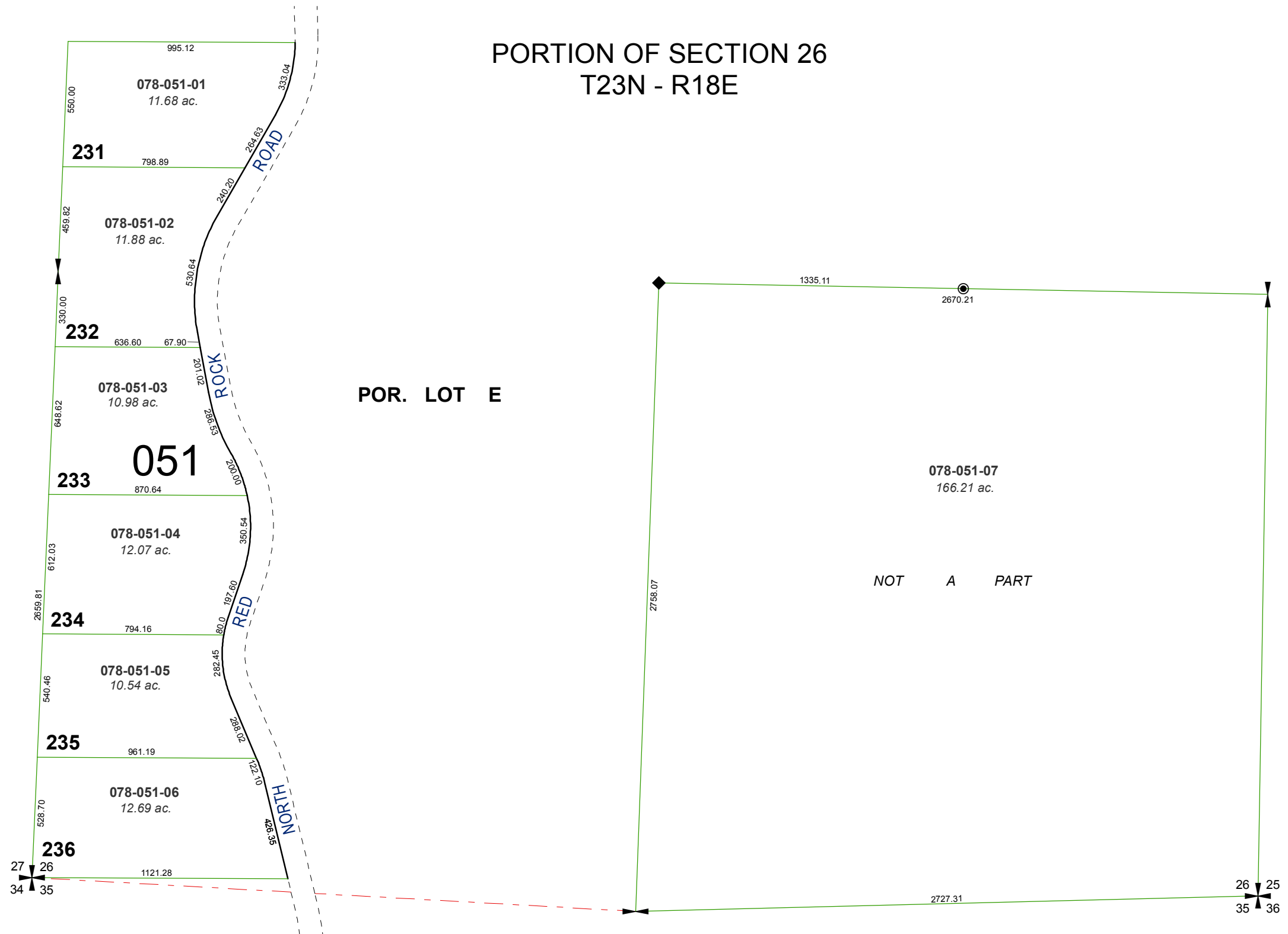


# RECORD OF SURVEY # 684 AMENDED RECORD OF SURVEY # 831

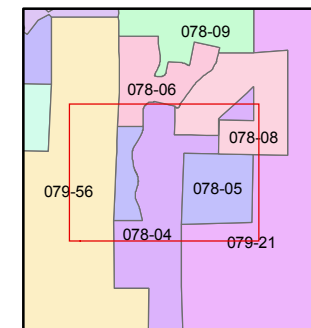
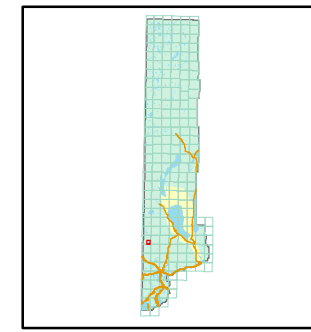
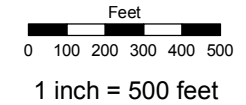
PORTION OF SECTION 26  
T23N - R18E



Assessor's Map Number  
**078-05**

STATE OF NEVADA  
**WASHOE COUNTY**  
ASSESSOR'S OFFICE  
Joshua G. Wilson, Assessor

1001 East Ninth Street  
Building D  
Reno, Nevada 89512  
(775) 328-2231



created by: TWT 4/12/2011  
last updated: \_\_\_\_\_  
area previously shown on map(s)  
\_\_\_\_\_

NOTE: This map was prepared for the use of the Washoe County Assessor for assessment and illustrative purposes only. It does not represent a survey of the premises. No liability is assumed as to the sufficiency or accuracy of the data delineated hereon.