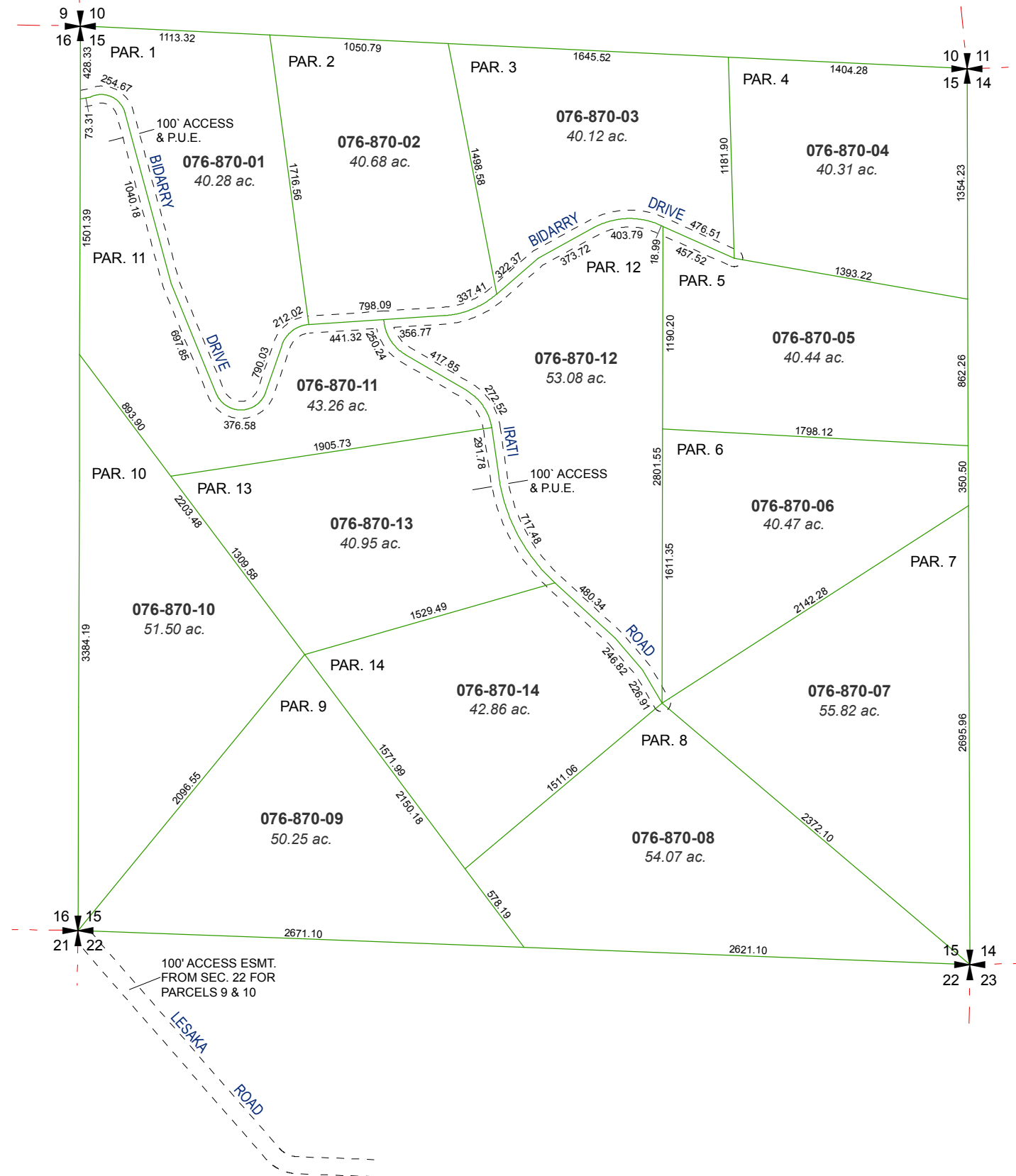


# MAP OF DIVISION INTO LARGE PARCELS # 166

SECTION 15  
T21N - R21E



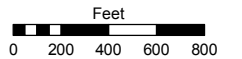
Assessor's Map Number

**076-87**

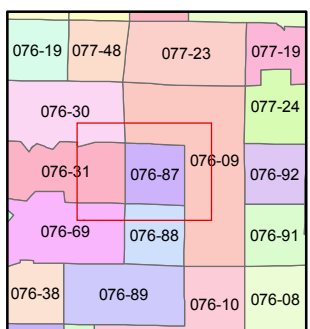
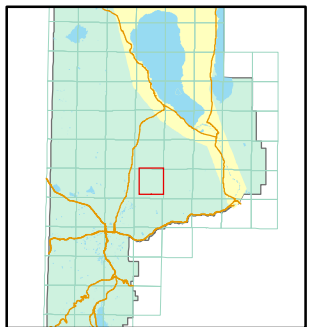
STATE OF NEVADA  
**WASHOE COUNTY**  
ASSESSOR'S OFFICE

Joshua G. Wilson, Assessor

1001 East Ninth Street  
Building D  
Reno, Nevada 89512  
(775) 328-2231



1 inch = 800 feet



created by: TWT 6/22/2011

last updated: \_\_\_\_\_

area previously shown on map(s)

076-09

NOTE: This map was prepared for the use of the Washoe County Assessor for assessment and illustrative purposes only. It does not represent a survey of the premises. No liability is assumed as to the sufficiency or accuracy of the data delineated hereon.