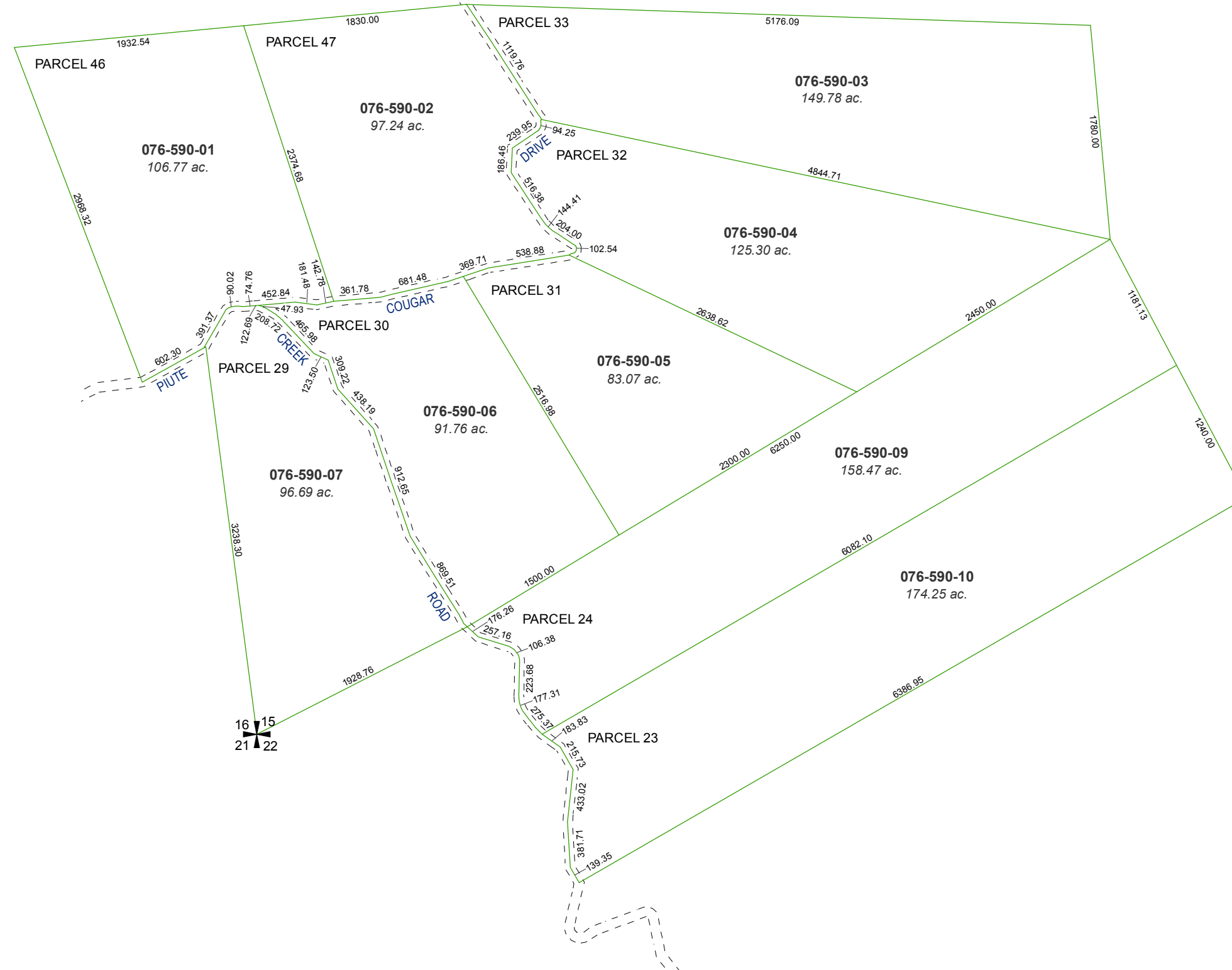


# MAP OF DIVISION INTO LARGE PARCELS # 40 MONTE CRISTO RANCH - UNIT NO. 2

PORTIONS OF SECTIONS  
9, 10, 11, 14, 15, 16 & 22  
T22N - R22E

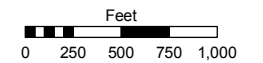


Assessor's Map Number  
**076-59**

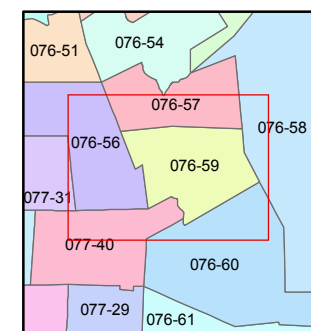
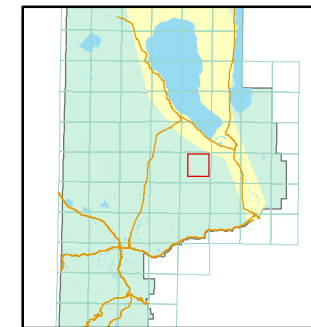
STATE OF NEVADA  
**WASHOE COUNTY**  
ASSESSOR'S OFFICE

Joshua G. Wilson, Assessor

1001 East Ninth Street  
Building D  
Reno, Nevada 89512  
(775) 328-2231



1 inch = 1,000 feet



created by: TWT 5/19/2011

last updated: \_\_\_\_\_

area previously shown on map(s)  
\_\_\_\_\_

NOTE: This map was prepared for the use of the Washoe County Assessor for assessment and illustrative purposes only. It does not represent a survey of the premises. No liability is assumed as to the sufficiency or accuracy of the data delineated hereon.